



WARNING: CHOKING HAZARD

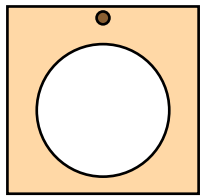
Contains small parts and functional/sharp points.
Not for children under 4 years old.
Adult supervision required.



SCARECROW PLANTER

Made in Chonburi, Thailand exclusively for The Home Depot by Houseworks, Ltd
2388 Pleasantdale Road, Atlanta, GA 30340 · batch #171123 · date: 05/19

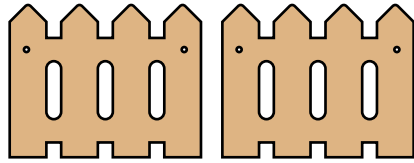
Contents:



1 Base



1 Dowel



2 Picket Fences

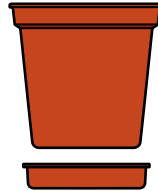
1 Sticker Sheet



4 Nails



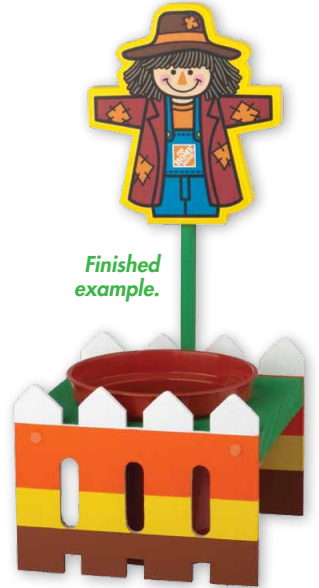
1 Scarecrow



1 Pot with Saucer

ALSO NEEDED:

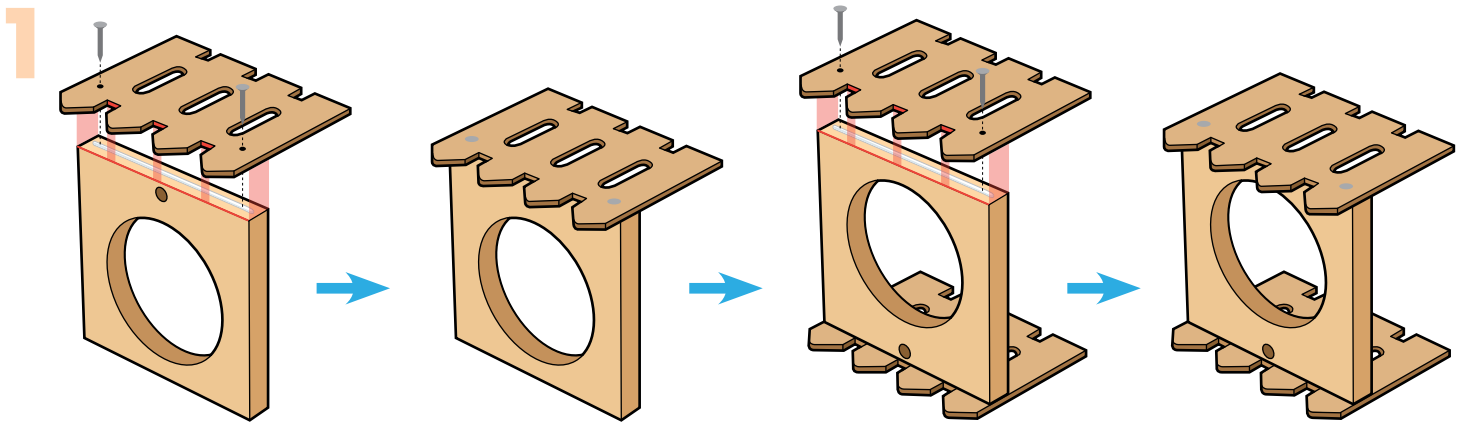
- Fine Sandpaper
- Wood Glue
- Hammer



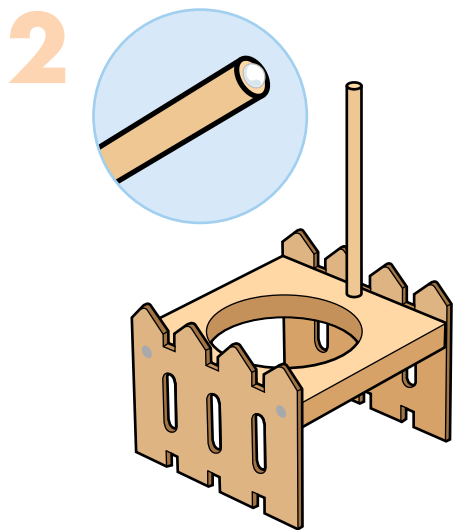
Finished example.

Assembly:

Start with sanding each wood piece to remove any rough edges. Remember to sand in the direction of the wood grain. Glue and nail the pieces together. Allow glue to completely dry.

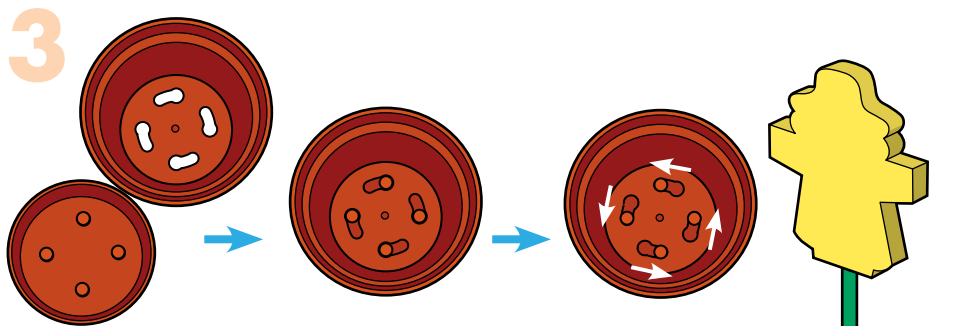


Step 1 — Stand the **base piece** up with the **dowel hole** at the top edge. Add a thin line of glue to the top edge. Pick up one of the **picket fence pieces**. Using the straight edges between the pointed pickets as a guide, place it on top of the **base piece**. The pointed pickets should be above the dowel hole side. Make sure the side edges are even. Nail them together. Turn the project over and repeat to attach the other **picket fence piece**.



Step 2 — Add a dot of glue to one end of the **dowel**. Push the glued end into the **dowel hole**. Tap with a hammer if necessary.

Attention: If you are painting the project, paint and wait to dry completely before adding the **scarecrow piece** and **pot with saucer**.



Step 3 — Push the **scarecrow piece** onto the **dowel**. Add the **saucer** to the **pot**. **Twist and lock** them together. Drop the **pot with saucer** into the **base piece**. Add the **sticker** as shown above.

(Ver el dorso para instrucciones en español.)