



## WARNING: CHOKING HAZARD

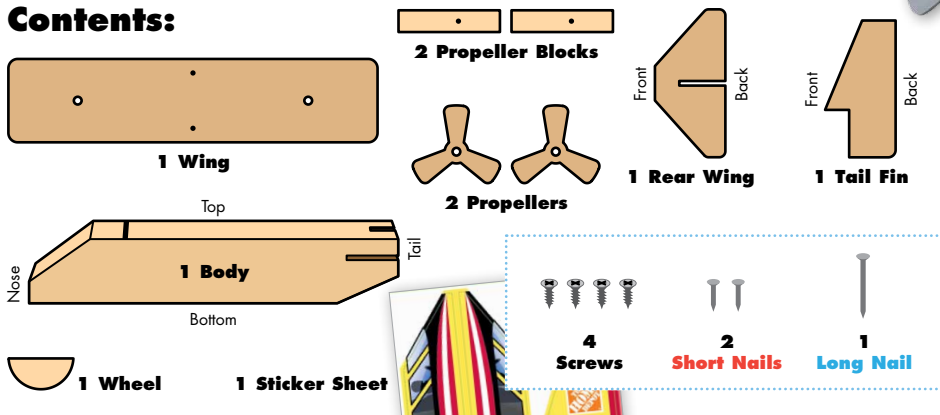
Toy contains small parts and functional/sharp points.  
Not for children under 4 years old.  
Adult supervision required.



# FIRE PLANE

Made in Chonburi, Thailand exclusively for The Home Depot by Houseworks, Ltd  
2388 Pleasantdale Road, Atlanta, GA 30340 • batch #171124 • date: 06/19

## Contents:



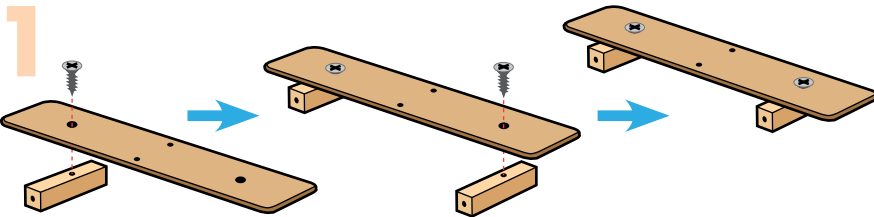
Finished example.

## ALSO NEEDED:

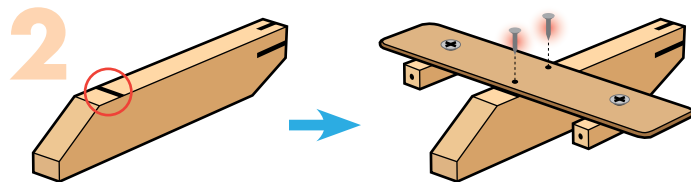
- Fine Sandpaper
- Wood Glue
- Hammer
- #2 Phillips Screwdriver

## Assembly:

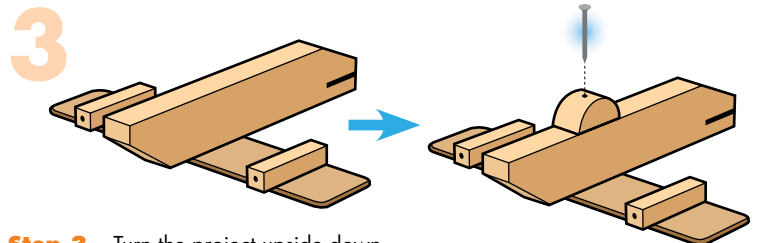
Start with sanding each wood piece to remove any rough edges. Remember to sand in the direction of the wood grain. Glue and nail the pieces together. Allow glue to completely dry.



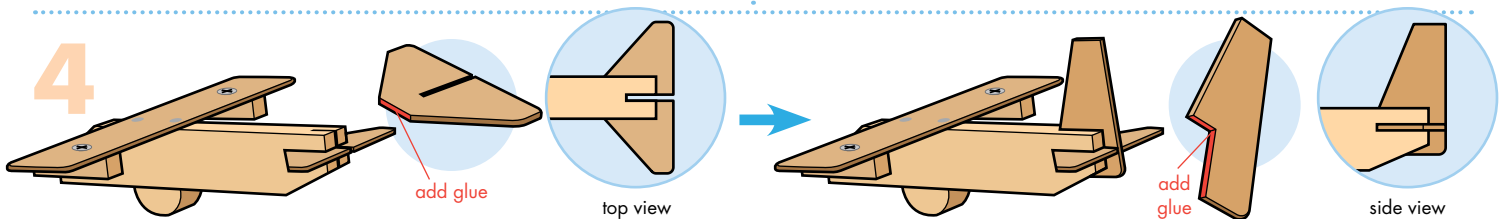
**Step 1** — Lay one of the **propeller blocks** down with the hole on top. Match the hole to one of the bigger holes in the **wing**. Using a #2 Phillips Screwdriver, attach them together. Repeat to attach the other **propeller block**. Make sure both **propeller blocks** are even with the **wing** at the back edge and sticking out at the front.



**Step 2** — Place the **body** with the line on top. Using the line as a guide, center and glue the **wing** on top. Make sure the **propeller blocks** are under the **wing** and sticking out toward the front. Using 2 **short nails**, nail the **wing** to the **body**.

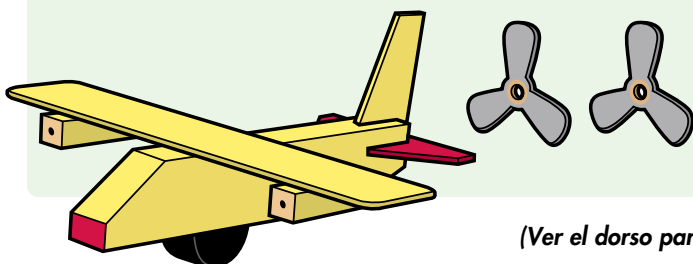


**Step 3** — Turn the project upside down. Glue the **wheel** to the **body** aligned with the **wing**. Using 1 **long nail**, nail them together.



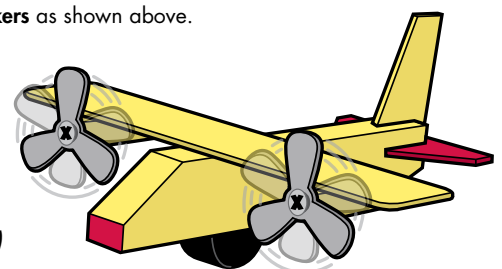
**Step 4** — Add a little glue to the front straight edge of the **rear wing** and push it into the horizontal slot and align the cutout with the vertical slot. Add a little glue to the notch of the **tail fin** and push it into the vertical slot. The **rear wing** and **tail fin** will be even across the back. Tap with a hammer if necessary.

**Attention:** If you are painting the project, **DO NOT paint the inside or around the holes in the propellers and propeller blocks**. Allow paint to dry completely.



**Step 5** — Using 2 **screws**, add the **propellers** to the holes in the **propeller blocks**. Don't screw too tightly and make sure the **propellers** spin.

Add the **stickers** as shown above.



(Ver el dorso para instrucciones en español.)