



WARNING: CHOKING HAZARD

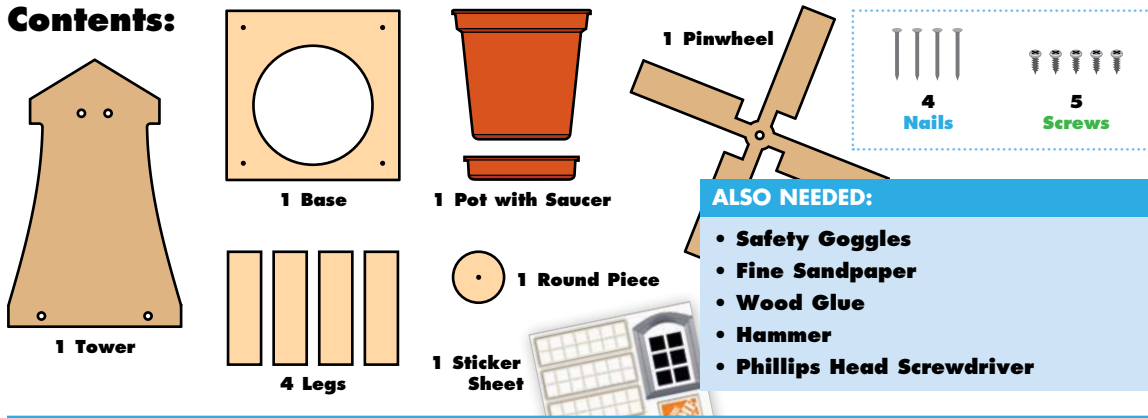
Contains small parts and functional/sharp points.
Not for children under 4 years old.
Adult supervision required.



WINDMILL PLANTER

Made in Chonburi, Thailand exclusively for The Home Depot by Houseworks, Ltd
2388 Pleasantdale Road, Atlanta, GA 30340 · batch #171107 · date: 01/18

Contents:



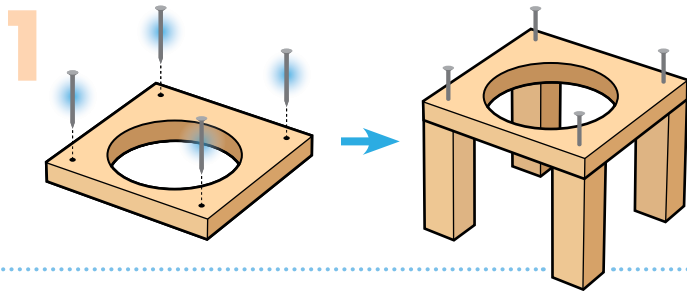
ALSO NEEDED:

- Safety Goggles
- Fine Sandpaper
- Wood Glue
- Hammer
- Phillips Head Screwdriver

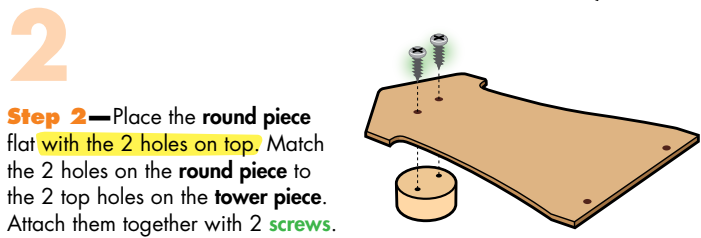


Assembly:

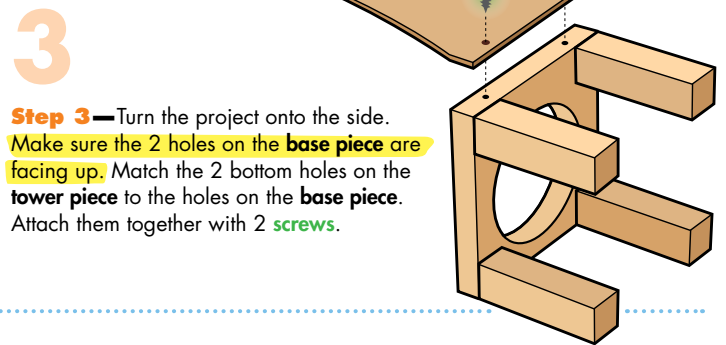
Start with sanding each wood piece to remove any rough edges. Remember to sand in the direction of the wood grain. Glue and nail the pieces together. Allow glue to completely dry.



Step 1 — Place the base piece flat with the nail holes on top. Start 4 nails. Glue one end of each leg piece under a corner of the base piece with corner edges even. Finish nailing.

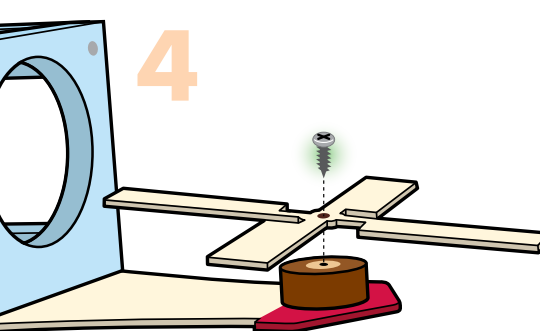


Step 2 — Place the round piece flat with the 2 holes on top. Match the 2 holes on the round piece to the 2 top holes on the tower piece. Attach them together with 2 screws.

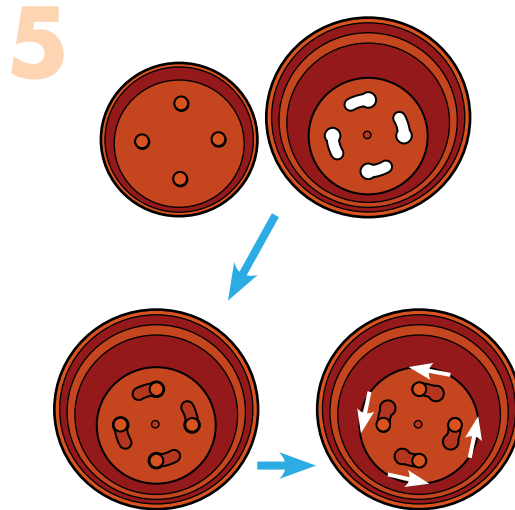


Step 3 — Turn the project onto the side. Make sure the 2 holes on the base piece are facing up. Match the 2 bottom holes on the tower piece to the holes on the base piece. Attach them together with 2 screws.

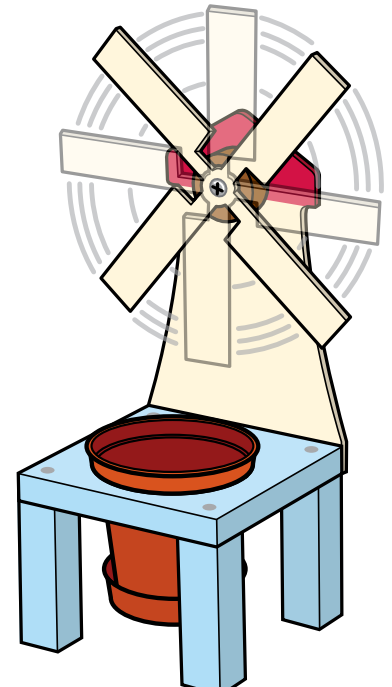
Attention: If you are painting the project, make sure NOT to paint the hole and around the hole of the round piece. Allow paint to dry completely.



Step 4 — Lay the project down. Match the hole on the pinwheel to the hole on the round piece. Attach them together with a screw. Don't screw too tightly and make sure the pinwheel spins.



Step 5 — Add the saucer to the pot. Twist and lock them together. Drop the pot with saucer into the base piece. Add stickers as shown above.



(Ver el dorso para instrucciones en español.)

California 93120 compliant for formaldehyde phase 2