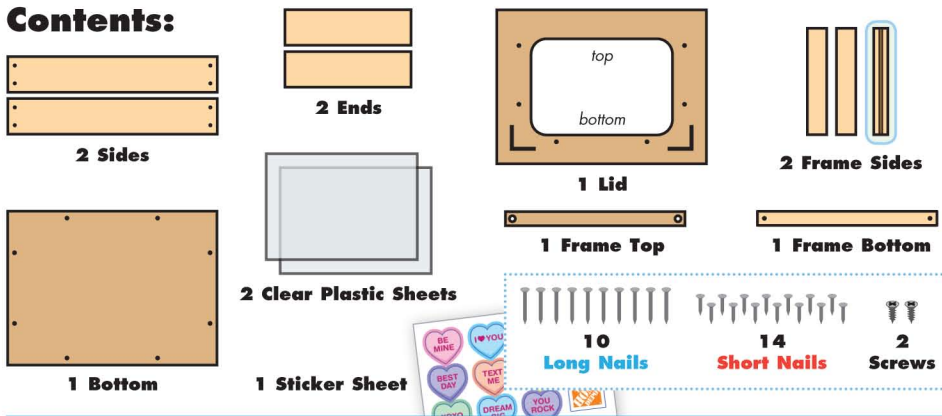


# VALENTINE'S PHOTO BOX

Made in Thailand exclusively for The Home Depot by Houseworks, Ltd.  
 2388 Pleasantdale Road, Atlanta, GA 30340 · 71153 · Thailand 1021

Finished example.

## Contents:

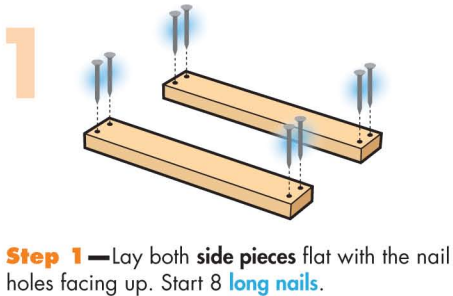


## ALSO NEEDED:

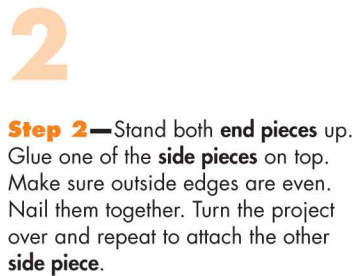
- Fine Sandpaper
- Wood Glue
- Hammer
- #2 Phillips Screwdriver

## Assembly:

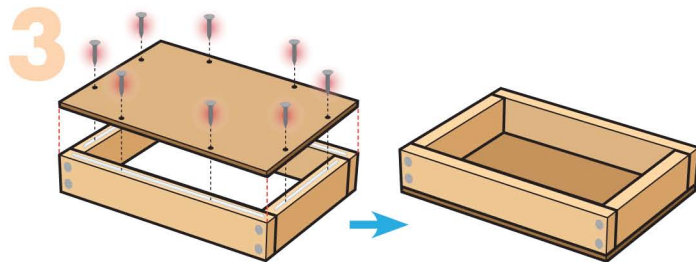
Start with sanding each wood piece to remove any rough edges. Remember to sand in the direction of the wood grain. Glue and nail the pieces together. Allow glue to completely dry.



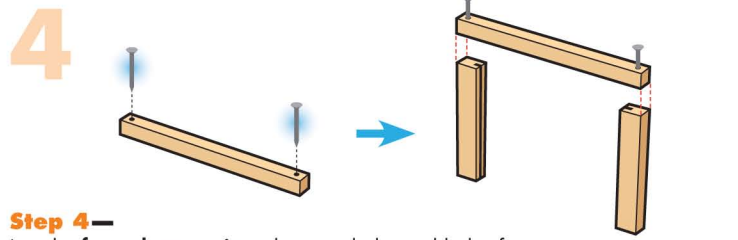
**Step 1**—Lay both side pieces flat with the nail holes facing up. Start 8 long nails.



**Step 2**—Stand both end pieces up. Glue one of the side pieces on top. Make sure outside edges are even. Nail them together. Turn the project over and repeat to attach the other side piece.

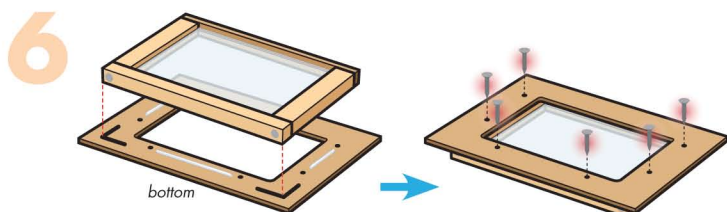
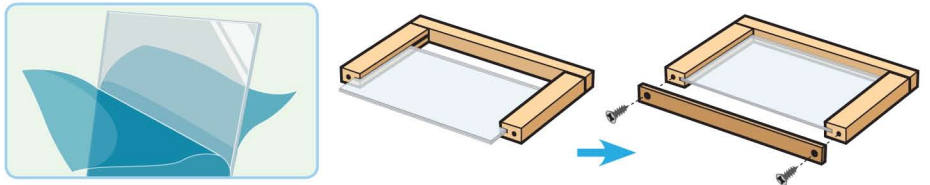


**Step 3**—Lay the project flat. Glue the bottom piece on top. Make sure all edges are even. Using 8 short nails, nail them together to form a box.



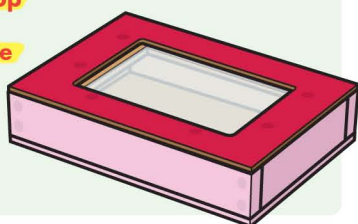
**Step 4**—Lay the frame bottom piece down with the nail holes facing up. Start 2 long nails. Stand both frame side pieces up with the screw holes facing down and the slots facing in. Place the frame bottom piece on top. Make sure outside edges are even. Nail them together.

**Step 5**—Peel off the blue protective sheets from BOTH sides of the clear plastic sheets. Slide them into the slots. Align the screw holes in the frame top and frame side pieces. Using a #2 Phillips Screwdriver, attach them together with 2 screws to form a photo frame.



**Step 6**—Lay the lid flat with the aiming lines facing up. The edge with the aiming lines is the bottom edge. Add thin lines of glue in between the 2 nail holes on the sides and bottom of the cutout. Using the aiming lines as guide, place the photo frame on the lid. Hold down the photo frame for about a minute so the glue will be sticky. Carefully turn the project over. Using 6 short nails, nail them together.

**Attention:** If you are painting the project, paint only the box and the top surface of the lid. Be very careful not to put paint on the clear plastic sheets or slots. Allow the paint to dry completely before adding the stickers.



**Step 7**—Add the stickers as you like.

**At Home:** Unscrew the frame top piece and place your favorite photo (3.5" x 5") in between the clear plastic sheets and replace the frame top piece.



(Ver el dorso para instrucciones en español.)