



**WARNING:**  
**CHOKING HAZARD**—Small Parts.  
 Not for children under 3 years.  
 The product contains functional sharp points and sharp edge. Not for children under 4 years.  
 Adult supervision required.



5+

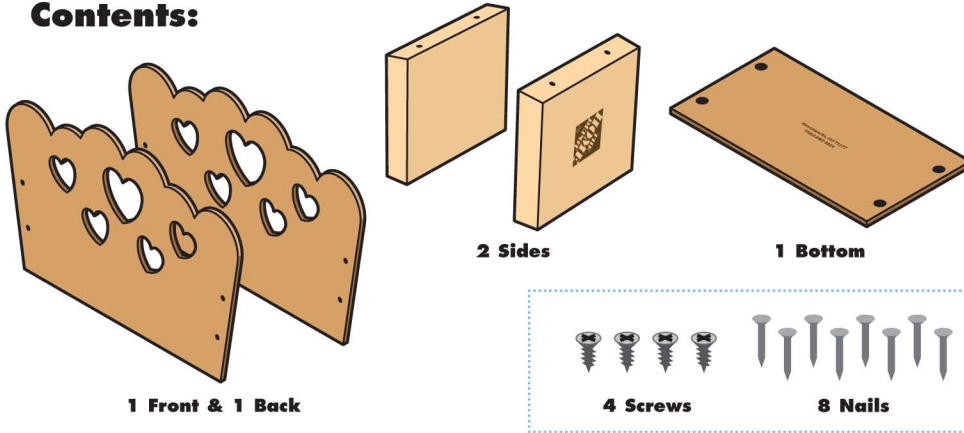
# VALENTINES BASKET

Made in Thailand exclusively for The Home Depot by Houseworks, Ltd.  
2388 Pleasantdale Road, Atlanta, GA 30340 · 71177 · Thailand 0923



Finished example.

## Contents:



Scan with your camera or visit [homedepot.com/kids](http://homedepot.com/kids) for an easy-to-follow guide on how to assemble this kit, plus more fun videos.

## ALSO NEEDED:

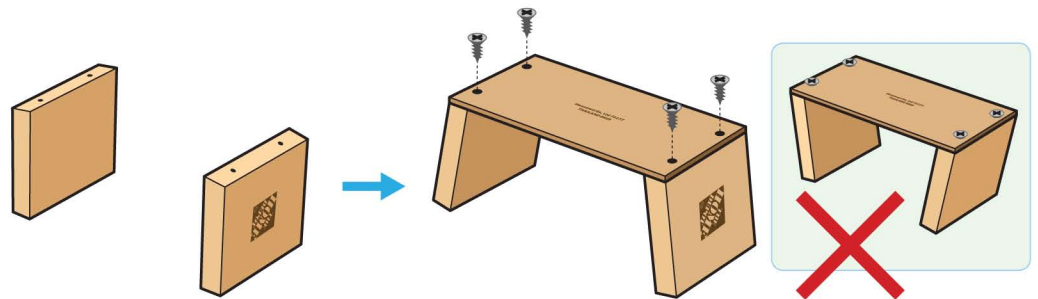
- Fine Sandpaper
- Wood Glue
- Hammer
- #2 Phillips Screwdriver

## Assembly:

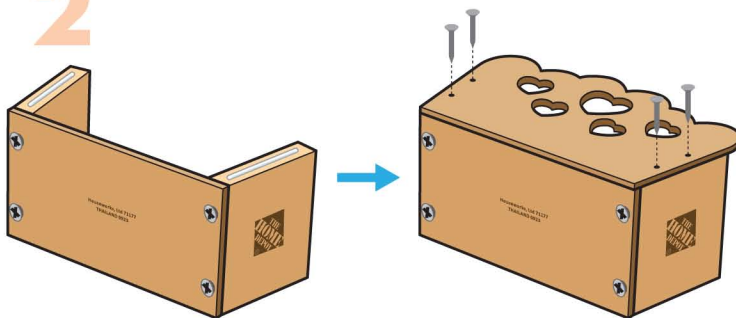
Start with sanding each wood piece to remove any rough edges. Remember to sand in the direction of the wood grain. Glue and nail the pieces together. Allow glue to completely dry.

1

**Step 1**—Stand both side pieces up. Align screw holes in the bottom piece to screw holes in the side pieces. Make sure the side pieces angled outward and not inward. Attach them together with 4 screws using a #2 Phillips Screwdriver.

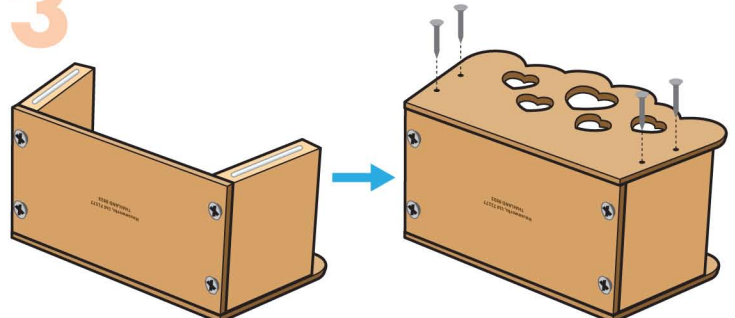


2



**Step 2**—Turn the project on an open side. Glue the front piece on top with bottom and side edges even. Nail them together with 4 nails.

3



**Step 3**—Turn the project over and repeat to attach the back piece.

(Ver el dorso para instrucciones en español.)