



WARNING:
CHOKING HAZARD – Small Parts.
Not for children under 3 years.
The product contains functional sharp points and sharp edge. Not for children under 4 years.
Adult supervision required.



PENGUIN MAILBOX

Made in Thailand exclusively for The Home Depot by Houseworks, Ltd.
2388 Pleasantdale Road, Atlanta, GA 30340 • 71201 • Thailand 0925

Contents:

1 Top

1 Left Side
(with 1 hole)

1 Right Side
(with 2 holes)

1 Bottom

1 Back

1 Front

1 Hinge

1 Flag

1 Sticker Sheet

Scan or visit
homedepot.com/kids
for more projects and activities.

10 Nails

3 Short Screws

2 Long Screws



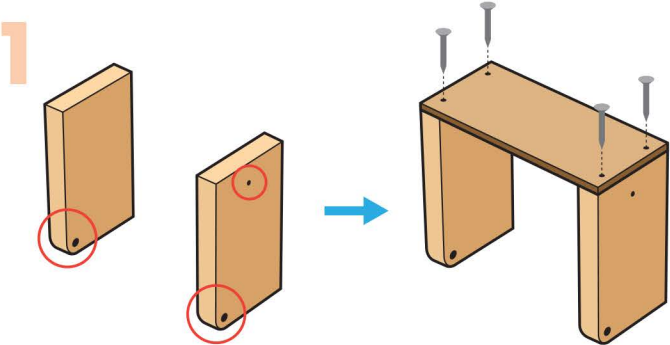
Finished example.

ALSO NEEDED:

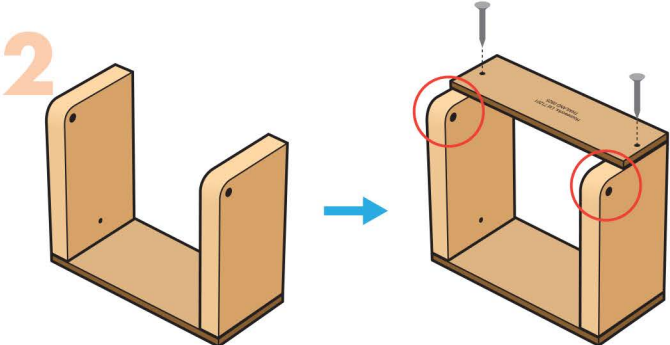
- Fine Sandpaper
- Wood Glue (optional)
- Hammer
- #2 Phillips Screwdriver

Assembly:

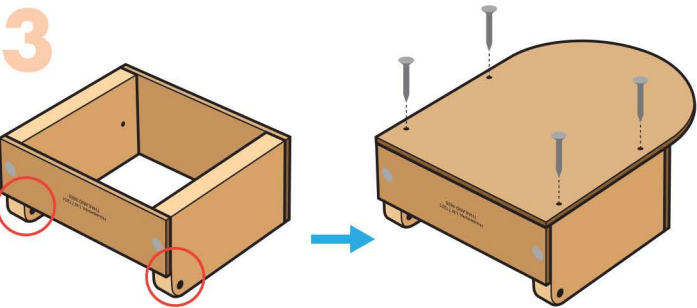
Start by sanding each wood piece to smooth any rough edges, following the grain. Glue is optional for added security. Let it dry completely.



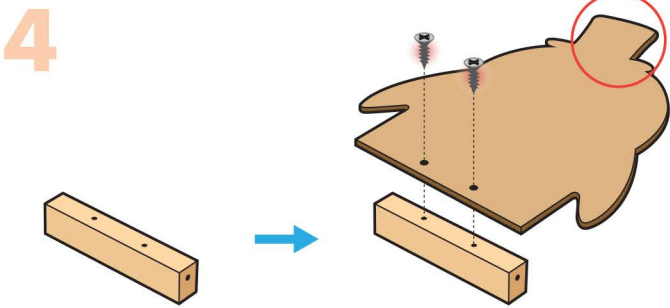
Step 1 — Stand both **side pieces** up with the rounded corners (and the big holes) at the bottom, facing each other. Make sure the screw hole for the **flag** is on the right. Place the **top piece** on top. Align the corners. Nail them together with four **nails**.



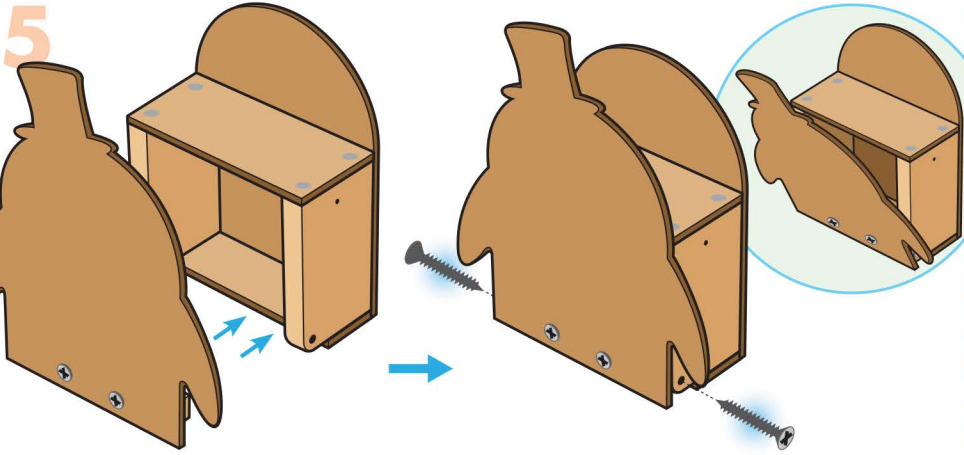
Step 2 — Turn the **project** over. Place the **bottom piece** on top. Make sure the back square corners and side edges are even, and the **front rounded corners** stay **uncovered**. Nail them together with two **nails**.



Step 3 — Lay the **project** down with the rounded corners at the bottom. Place the **back piece** on top. Align the bottom square corners with the **bottom piece**, and make sure the side edges are even. Nail them together with four **nails**.



Step 4 — Place the **hinge** with the two holes facing up. Pick up the **front piece** and make sure the **hat** is on the left. Align the holes in **both pieces**. Using a **#2 Phillips screwdriver**, attach with two **short screws**.



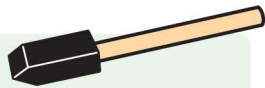
Step 5 — Stand the **project** up. Fit the **front assembly** onto the front and push it all the way in. Attach with two **long screws**. Adjust the **screws** so the **front** opens smoothly—not too tight or too loose.



Step 6 — Attach the **flag** to the **right side piece** using a **short screw**.

Painting Tip:

If painting the **project**, paint and let it dry completely before applying the **stickers** as shown above.



(Ver el dorso para instrucciones en español.)