



WARNING:

CHOKING HAZARD—Toy contains a small ball and small parts. Not for children under 3 years.

The product contains functional sharp points and sharp edge. Not for children under 4 years. Adult supervision required.



5+

PINBALL

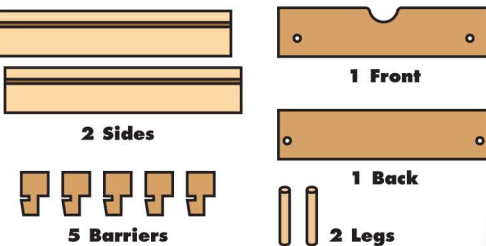
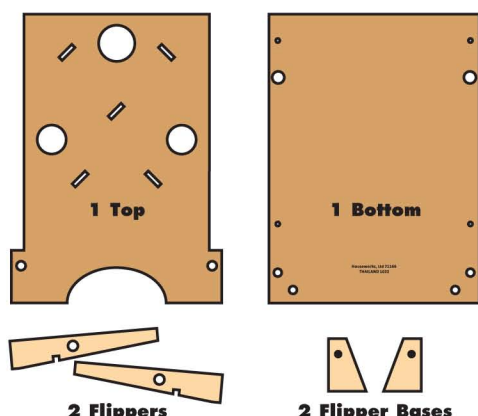
Made in Thailand exclusively for The Home Depot by Houseworks, Ltd.
2388 Pleasantdale Road, Atlanta, GA 30340 • 71166 • Thailand 1022

Scan with your camera or visit homedepot.com/kids for an easy-to-follow guide on how to assemble this kit, plus more fun videos.



Finished example.

Contents:

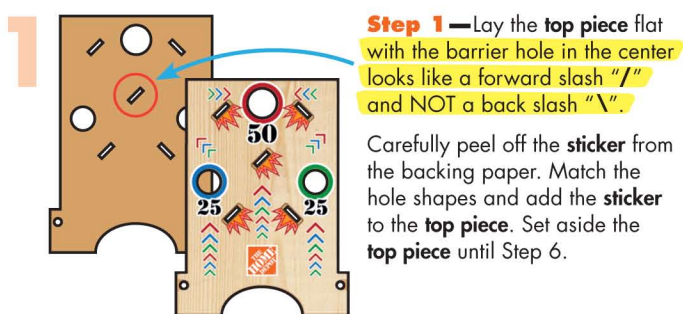


ALSO NEEDED:

- Fine Sandpaper
- Wood Glue
- Hammer
- #2 Phillips Screwdriver

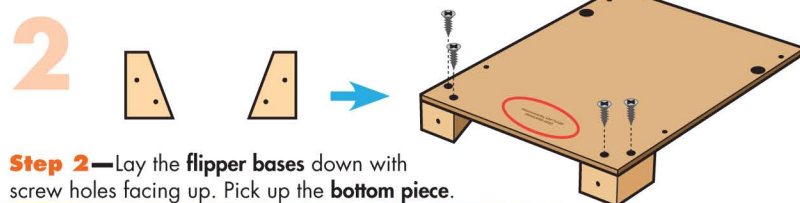
Assembly:

Start with sanding each wood piece to remove any rough edges. Remember to sand in the direction of the wood grain. Glue and nail the pieces together. Allow glue to completely dry.



Step 1—Lay the top piece flat with the barrier hole in the center looks like a forward slash “/” and NOT a back slash “\”.

Carefully peel off the sticker from the backing paper. Match the hole shapes and add the sticker to the top piece. Set aside the top piece until Step 6.

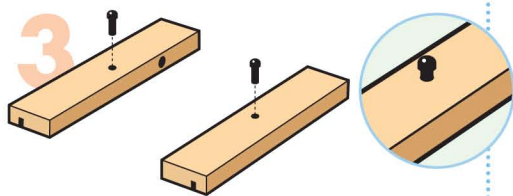


2

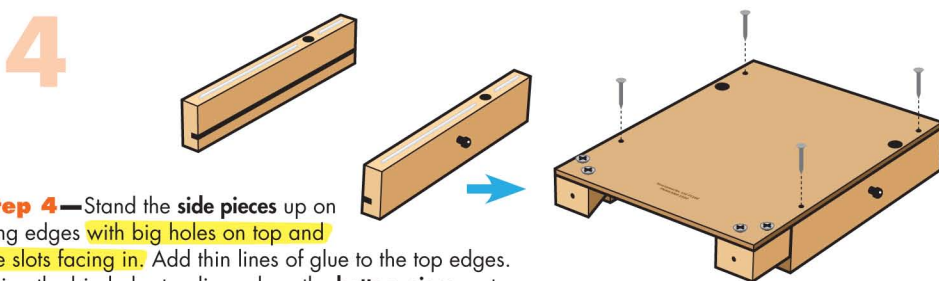
Step 2—Lay the flipper bases down with screw holes facing up. Pick up the bottom piece.

Note: the edge with the printed words is the bottom edge.

Align the corner screw holes at the bottom to the flipper bases and attach with 4 screws using a #2 Phillips Screwdriver.

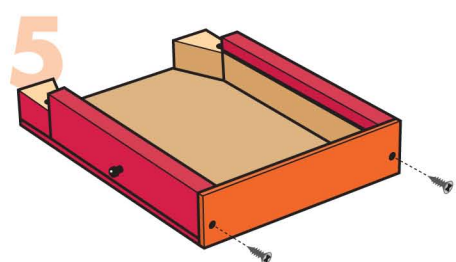


Step 3—Lay the side pieces down with peg holes facing up and slots facing down. Add a tiny dot of glue into the peg holes. Insert the small pegs and carefully tap with a hammer.



Step 4—Stand the side pieces up on long edges with big holes on top and the slots facing in. Add thin lines of glue to the top edges. Using the big holes to align, place the bottom piece on top. Make sure side and top edges are even. Nail them together with 4 nails.

Attention: If you are painting the project, **DO NOT** paint the top piece, barriers, legs, slots in the side pieces or inside of any holes. Let the paint dry completely.



Step 5—Attach the back piece with 2 screws.



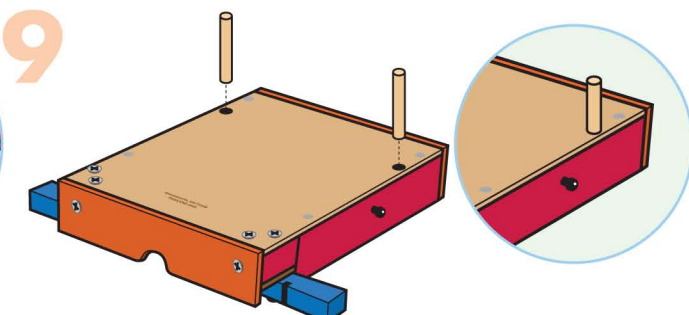
Step 6—Slide the top piece into the slots.



Step 7—Attach the front piece with 2 screws.



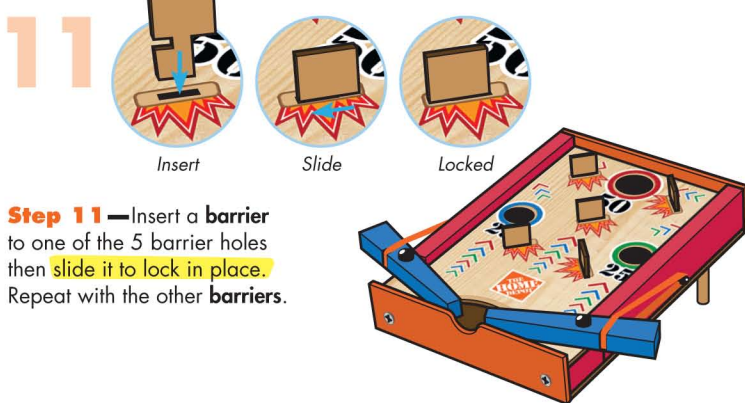
Step 8—Add a tiny dot of glue into peg holes of the flipper bases. Pick up a flipper. The edge with a cutout is the front edge. Aligning the holes, place the flippers on top. Push the large pegs through the holes to attach them together. Lightly tap with a hammer if necessary.



Step 9—Turn the project over. Add a tiny dot of glue into the big holes. Insert the legs. Lightly tap with a hammer if necessary.



Step 10—Turn the project over. Using the rubber bands, carefully loop the short pegs to the cutouts of the flippers.



Step 11—Insert a barrier to one of the 5 barrier holes then slide it to lock in place. Repeat with the other barriers.

(Ver el dorso para instrucciones en español.)