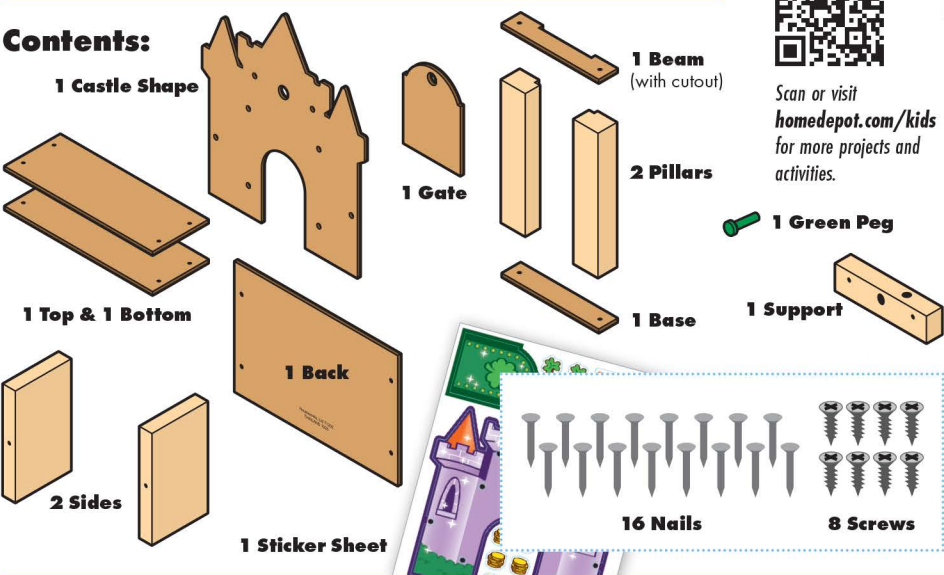


LEPRECHAUN TRAP

Made in Thailand exclusively for The Home Depot by Houseworks, Ltd.
2388 Pleasantdale Road, Atlanta, GA 30340 • 71202 • Thailand 1025

Contents:



Scan or visit
[homedepot.com/kids](https://www.homedepot.com/kids)
for more projects and activities.



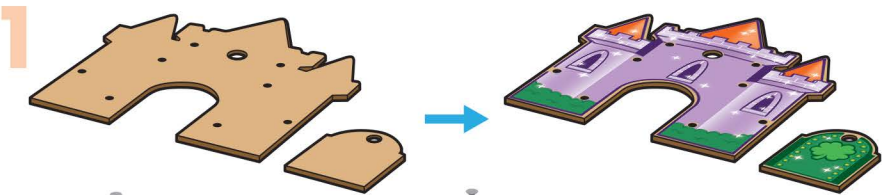
Finished example.

ALSO NEEDED:

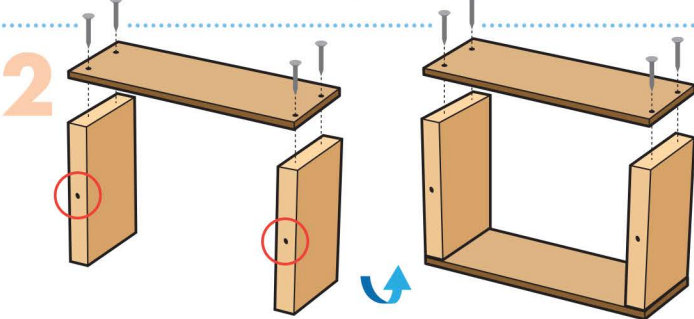
- Fine Sandpaper
- Wood Glue (optional)
- Hammer
- #2 Phillips Screwdriver

Assembly:

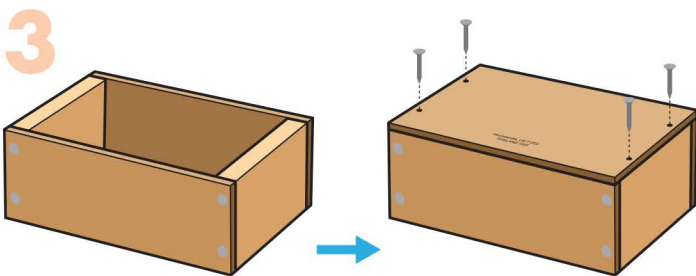
Start by sanding each wood piece to smooth any rough edges, following the grain.
Glue is optional for added security. Let it dry completely.



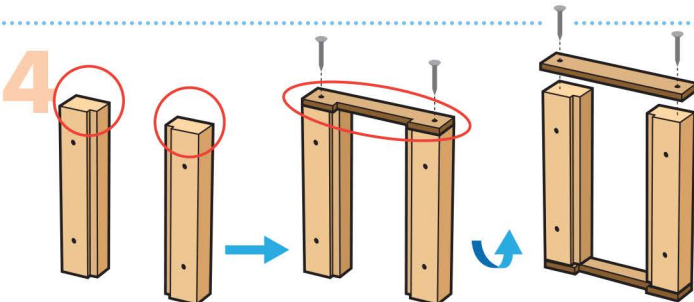
Step 1 — Lay the **castle shape** and the **gate** flat. Carefully peel off the **castle sticker** and apply it onto the **castle shape**, matching the holes. Repeat for the **gate sticker** and **gate**.



Step 2 — Stand both **side pieces** up with the holes facing the same direction. Place the **top piece** on top. Ensure the corner edges are even. Nail them together. Turn the **project** over and repeat the step to attach the **bottom piece**.



Step 3 — Lay the **project** down with the holes facing down. Place the **back piece** on top. Make sure the outside edges are even. Nail them together.



Step 4 — Stand both **pillars** upright with the holes facing the same direction and the cutouts facing inward.

Place the **beam** on top with its cutout edge positioned over the **pillars' cutouts**. Align all corners, then carefully nail them together.

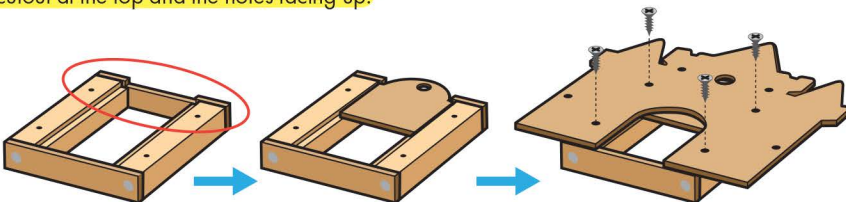
Turn the **pillar assembly** over. Place the **base** on top, align the corners, and nail it in place.

Step 5 — Lay the **pillar assembly** flat with the **beam's** cutout at the top and the holes facing up.

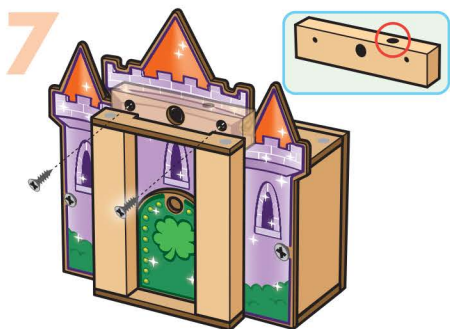
Place the **gate** in the cutout area, sticker side down.

Then place the **castle shape** on top, sticker side down.

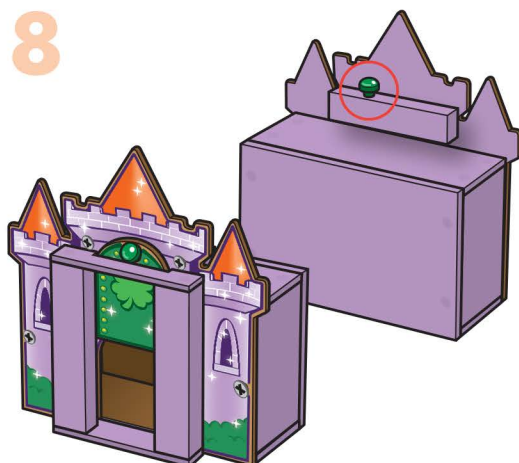
Align the holes in the **pillars** with the holes in the **castle shape**. Attach them together using 4 screws and a #2 Phillips screwdriver.



Step 6 — Attach the **castle shape** and the **box assembly** with 2 screws.



Step 7 — Attach the **support piece** to the back of the **castle shape** using 2 screws. Make sure the vertical peg hole is at the top right.



Step 8 — You can trap the Leprechaun by releasing the **green peg** to close the **gate**. When not in use, store the **green peg** in the peg hole on top of the **support piece**.

Painting Tip: If painting the **project**, avoid painting over the stickers, peg holes, and moving parts. Let it dry completely before applying the remaining stickers.



(Ver el dorso para instrucciones en español.)