



**WARNING:**  
**CHOKING HAZARD**  
 Toy contains small parts and functional/sharp points. Not for children under 3 years old. Adult supervision required.

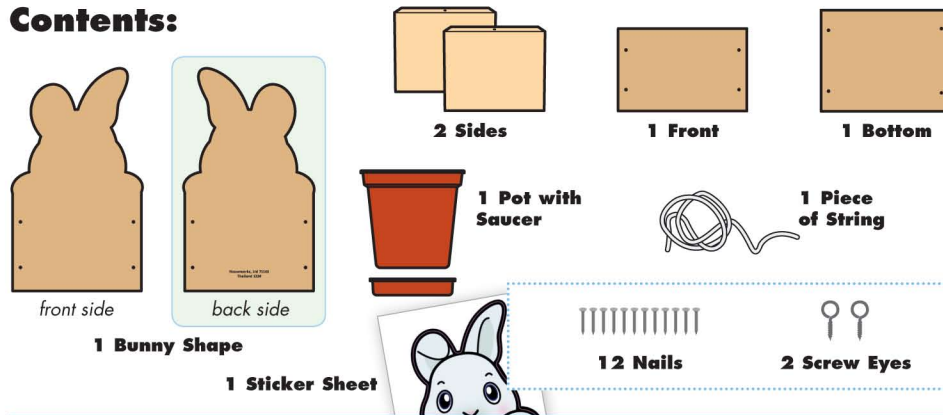


5+

# BUNNY HANGING PLANTER

Made in Thailand exclusively for The Home Depot by Houseworks, Ltd.  
2388 Pleasantdale Road, Atlanta, GA 30340 · 71143 · Thailand 1220

## Contents:



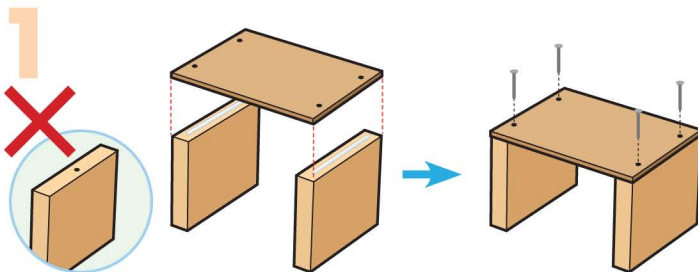
Finished example.

## ALSO NEEDED:

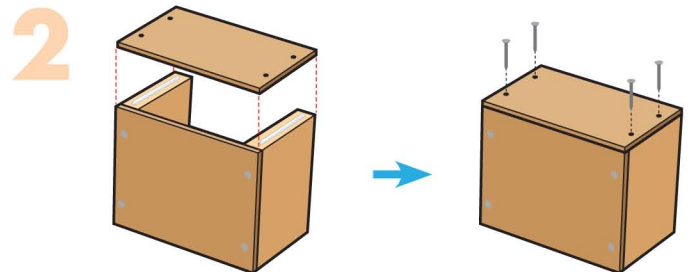
- Fine Sandpaper
- Wood Glue
- Hammer

## Assembly:

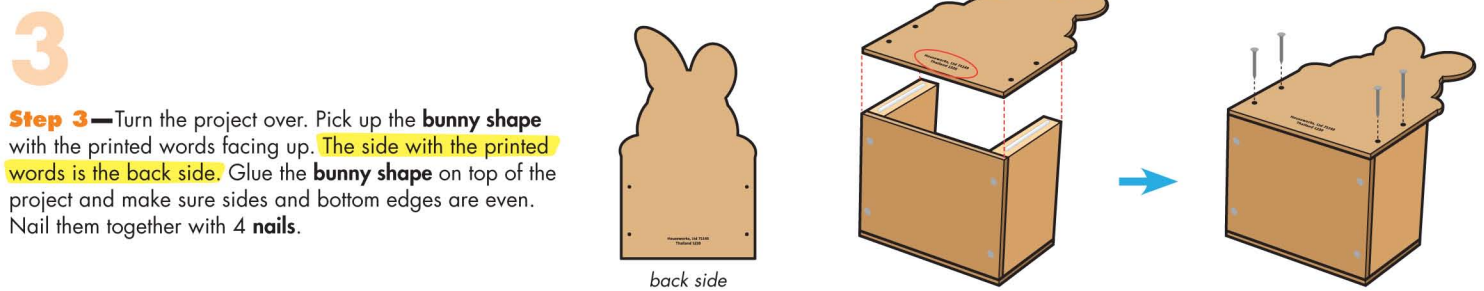
Start with sanding each wood piece to remove any rough edges. Remember to sand in the direction of the wood grain. Glue and nail the pieces together. Allow glue to completely dry.



**Step 1**—Stand both side pieces up with the screw eye holes facing down. Glue the bottom piece on top. Make sure all edges are even. Nail them together with 4 nails.

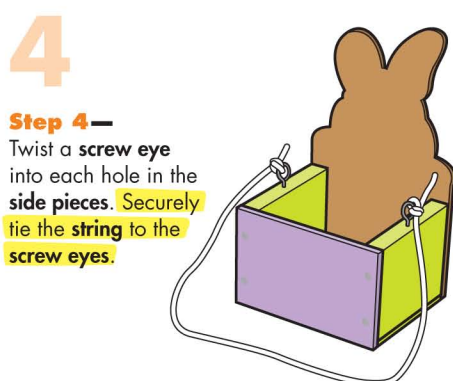


**Step 2**—Turn the project on an open end. Glue the front piece on top. Make sure all edges are even. Nail them together with 4 nails.

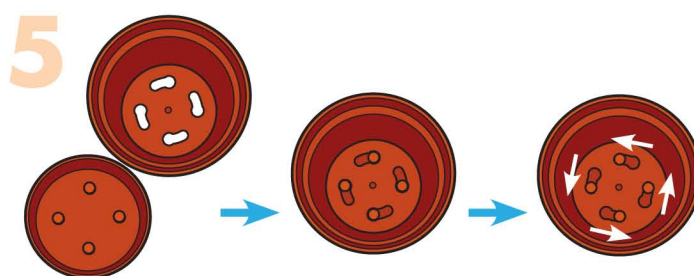


**Step 3**—Turn the project over. Pick up the bunny shape with the printed words facing up. The side with the printed words is the back side. Glue the bunny shape on top of the project and make sure sides and bottom edges are even. Nail them together with 4 nails.

**Attention:** If you are painting the project, paint and wait to dry completely before adding the screw eyes, string, stickers, pot and saucer.



**Step 4**—Twist a screw eye into each hole in the side pieces. Securely tie the string to the screw eyes.



**Step 5**—Add the stickers as shown. Add the saucer to the pot. Twist and lock them together. Drop the pot with saucer into the project.



(Ver el dorso para instrucciones en español.)