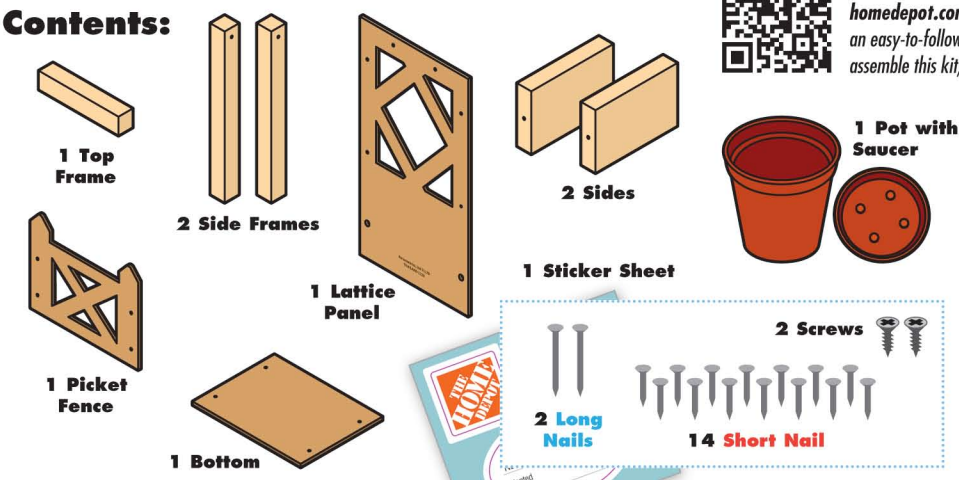


LATTICE PLANTER

Made in Thailand exclusively for The Home Depot by Houseworks, Ltd.
 2388 Pleasantdale Road, Atlanta, GA 30340 • 71179 • Thailand 1123

Contents:



Scan with your camera or visit homedepot.com/kids for an easy-to-follow guide on how to assemble this kit, plus more fun videos.



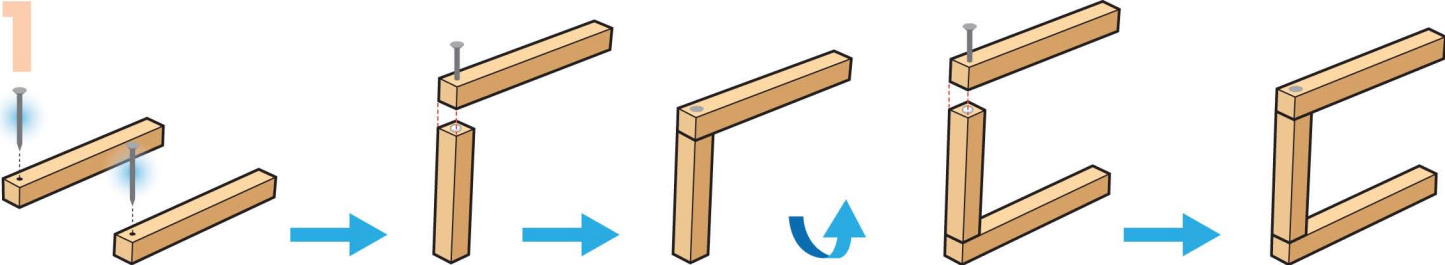
Finished example.

ALSO NEEDED:

- Fine Sandpaper
- Wood Glue
- Hammer
- #2 Phillips Screwdriver

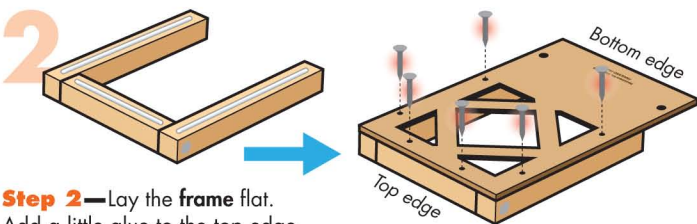
Assembly:

Start with sanding each wood piece to remove any rough edges. Remember to sand in the direction of the wood grain. Glue and nail the pieces together. Allow glue to completely dry.

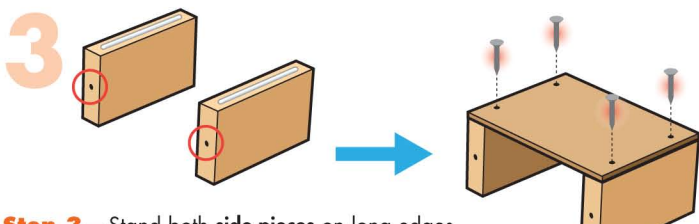


Step 1—Lay both side frame pieces down with holes facing up. Start 2 long nails. Stand the top frame piece up. Glue one side frame piece on top. Make sure edges are even. Carefully, nail them together.

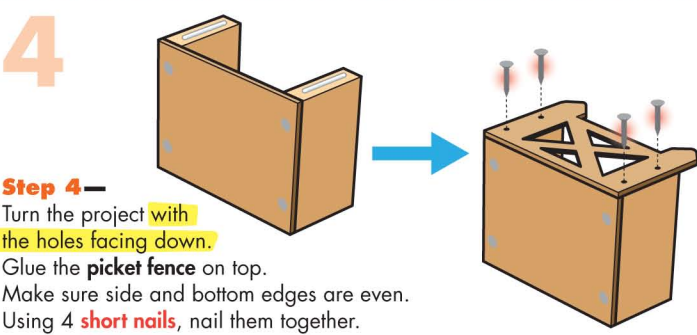
Turn the project over and repeat to attach the other side frame piece to form a frame.



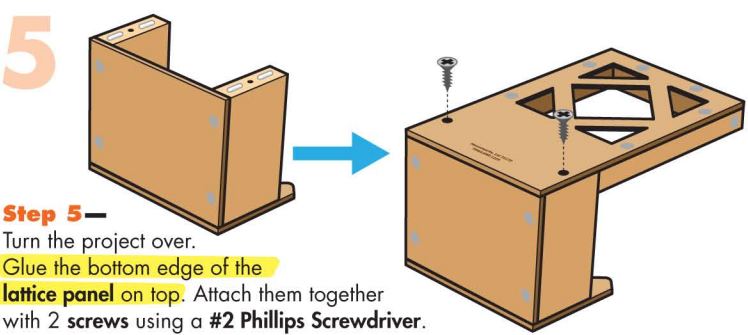
Step 2—Lay the frame flat. Add a little glue to the top edge. Identify the lattice panel. The edge with cutouts is the top edge. Place the top edge of the lattice panel on top of the frame. Make sure edges are even. Using 6 short nails, nail them together. Set this aside for now.



Step 3—Stand both side pieces on long edges and make sure holes are facing the same side. Glue the bottom piece on top. Make sure edges are even. Using 4 short nails, nail them together.

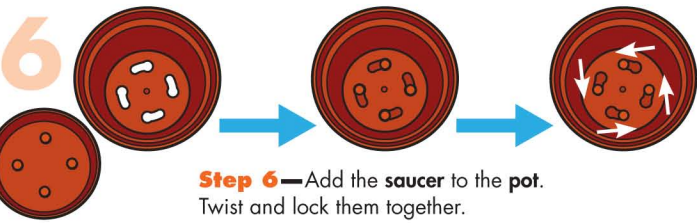


Step 4—Turn the project with the holes facing down. Glue the picket fence on top. Make sure side and bottom edges are even. Using 4 short nails, nail them together.



Step 5—Turn the project over. Glue the bottom edge of the lattice panel on top. Attach them together with 2 screws using a #2 Phillips Screwdriver.

Attention: If you are painting the project, paint and let dry completely before adding the stickers.



Step 6—Add the saucer to the pot. Twist and lock them together.



Step 7—Add the oval sticker to the pot and the logo stickers to the sides. Drop the pot with saucer into the planter.

(Ver el dorso para instrucciones en español.)