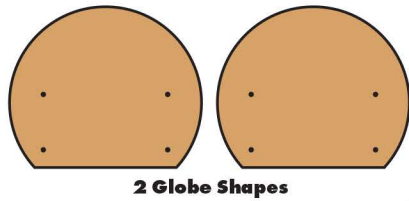


GLOBE PLANTER

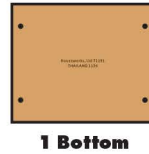
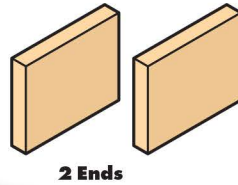
Made in Thailand exclusively for The Home Depot by Houseworks, Ltd.
 2388 Pleasantdale Road, Atlanta, GA 30340 · 71191 · Thailand 1124

Finished example.

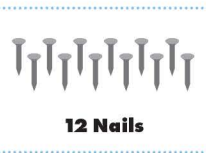
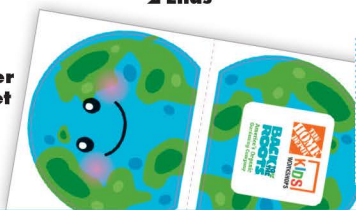
Contents:



Scan or visit homedepot.com/kids for more projects and activities.



1 Sticker Sheet

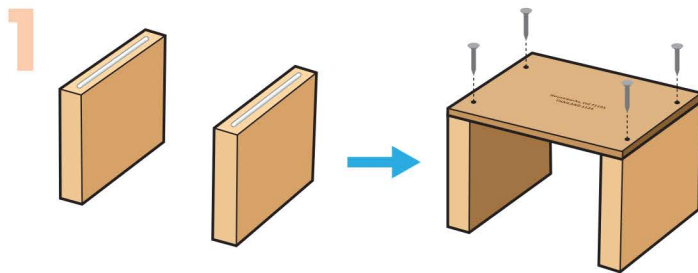


ALSO NEEDED:

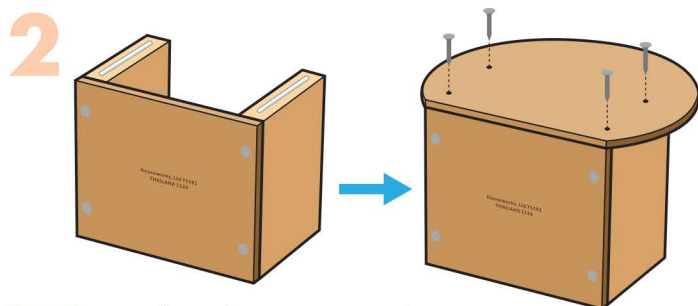
- Fine Sandpaper
- Wood Glue
- Hammer

Assembly:

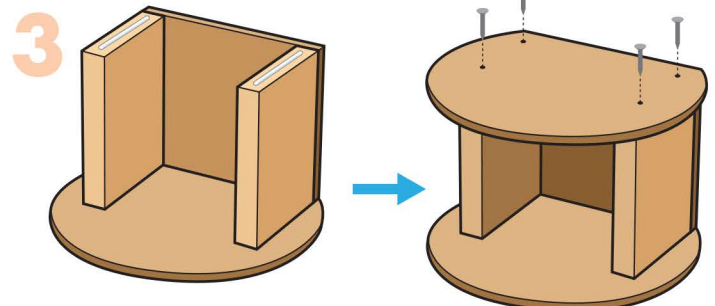
Start with sanding each wood piece to remove any rough edges. Remember to sand in the direction of the wood grain. Glue and nail the pieces together. Allow glue to completely dry.



Step 1 — Stand both end pieces up on their long edges. Add thin lines of glue to the top edges. Place the bottom piece on top, ensuring the corner edges are even. Nail them together with 4 nails.

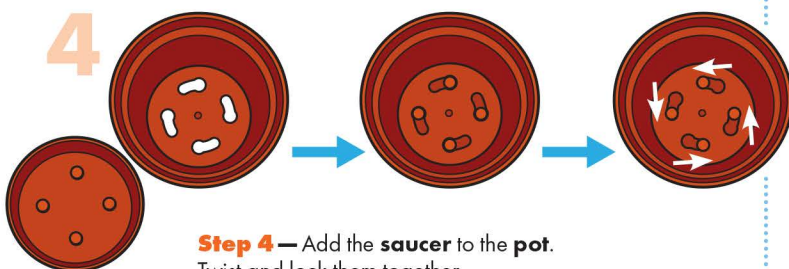


Step 2 — Turn the project on an open side. Add thin lines of glue to the top edges of the end pieces. Place one globe shape on top. Ensure the bottom edges are even and the pieces are centered. Nail them together with 4 nails.

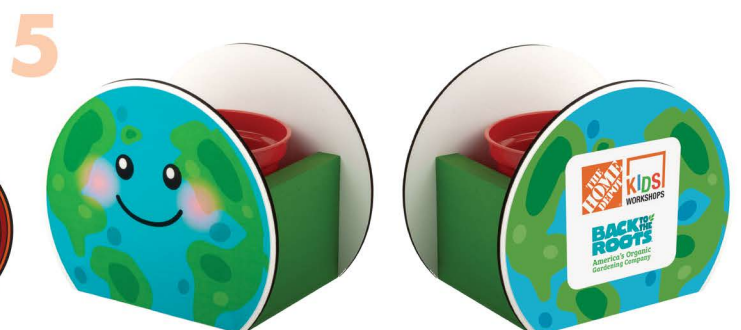


Step 3 — Turn the project over and repeat to attach the other globe shape.

Attention: If you are painting the project, paint it and allow the paint to dry completely before moving on to the next steps.



Step 4 — Add the saucer to the pot. Twist and lock them together.



Step 5 — Apply the stickers to both globe shapes. Drop the pot with saucer into the planter.

(Ver el dorso para instrucciones en español.)