



## WARNING: CHOKING HAZARD

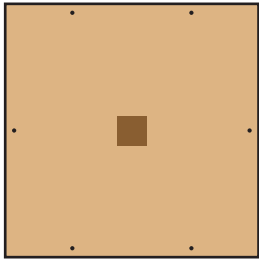
Contains small parts and functional/sharp points.  
Not for children under 4 years old.  
Adult supervision required.



# BLOOMING ART

Made in Chonburi, Thailand exclusively for The Home Depot by Houseworks, Ltd  
2388 Pleasantdale Road, Atlanta, GA 30340 • batch #171119 • date: 01/19

## Contents:



1 Board



2 Side Bars  
(with no hole)



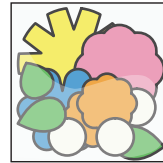
1 Top Bar (with 4 holes)



1 Bottom Bar (with 2 holes)



1 Piece of String



1 Bag of  
Foam Stickers



4  
Long Nails



6  
Short Nails



2  
Screw Eyes

Finished  
example.

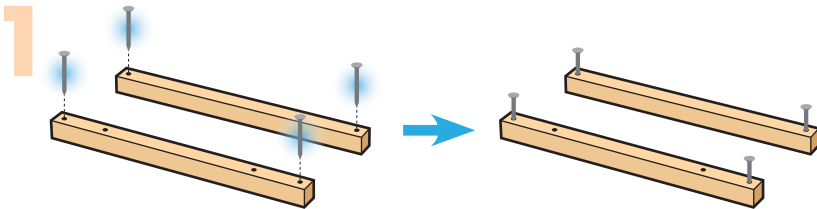


## ALSO NEEDED:

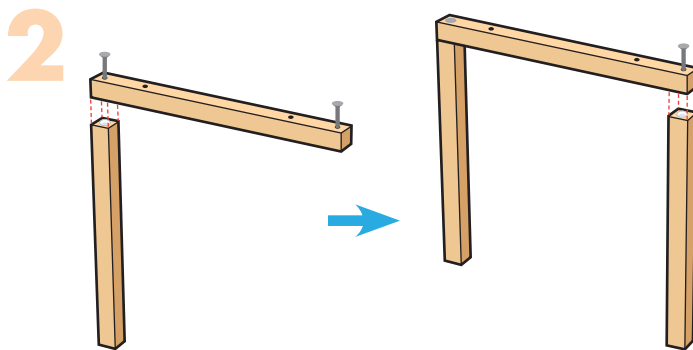
- Fine Sandpaper
- Wood Glue
- Hammer

## Assembly:

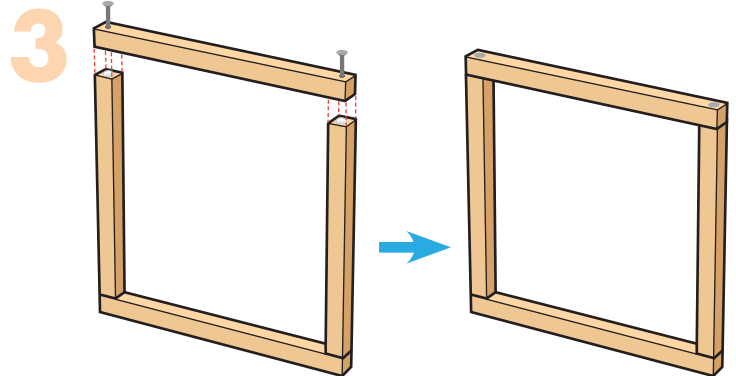
Start with sanding each wood piece to remove any rough edges. Remember to sand in the direction of the wood grain. Glue and nail the pieces together. Allow glue to completely dry.



**Step 1**—Place both **top** and **bottom** bars down with the holes on top. Start 4 **long nails** into the outer holes.



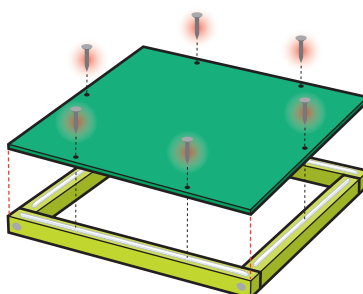
**Step 2**—Stand one of the **side bars** up. Add a little glue to the top edge. Place one of the nailed ends of the **top bar** on the glued edge. Make sure outside edges are even. Nail them together. Repeat to attached the other **side bar**.



**Step 3**—Turn the project over. Add a little glue to the top edges. Place the nailed **bottom bar** on top. Make sure all edges are even. Nail them together to form a **frame**.

**Attention:** If you are painting the project, paint and wait to dry completely before attaching the **board** to the **frame**.

**Step 4**—Lay the **frame** flat. Add lines of glue to the top edge. Place the **board** on top. Make sure all edges are even. Using 6 **short nails**, nail it in place.



**Step 5**—Push and twist each **screw eye** into the holes in the **top bar**. Tie the **string** to the **screw eyes**. Decorate the project with the **foam stickers** as you like.



(Ver el dorso para instrucciones en español.)