



WARNING:
CHOKING HAZARD—Small Parts.
Not for children under 3 years.

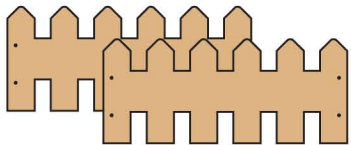
The product contains functional sharp points and sharp edge. Not for children under 4 years.
Adult supervision required.

5+

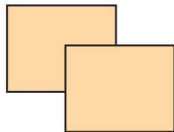
PICKET FENCE PLANTER

Made in Thailand exclusively for The Home Depot by Houseworks, Ltd.
2388 Pleasantdale Road, Atlanta, GA 30340 · 71156 · Thailand 0122

Contents:



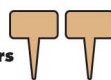
2 Picket Fences



2 Sides



2 Pots with Saucers



2 Plant Markers



1 Bottom



1 Sticker Sheet



12 Nails



Finished example.

ALSO NEEDED:

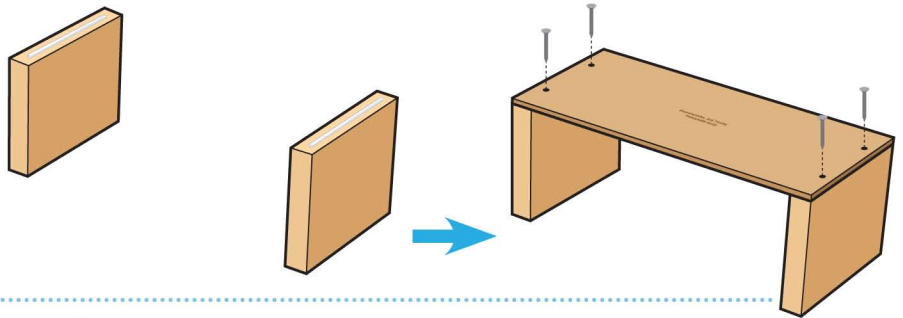
- Fine Sandpaper
- Wood Glue
- Hammer

Assembly:

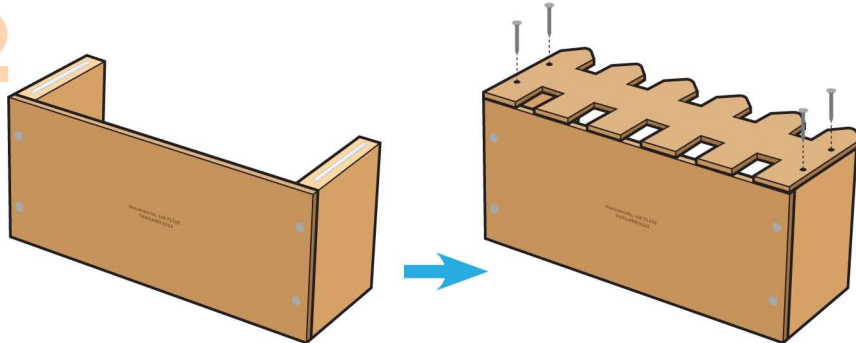
Start with sanding each wood piece to remove any rough edges. Remember to sand in the direction of the wood grain. Glue and nail the pieces together. Allow glue to completely dry.

1

Step 1—Stand both side pieces up on the longer edges. Add thin lines of glue to the top edges. Place the bottom piece on top. Make sure outside edges are even. Nail them together with 4 nails.

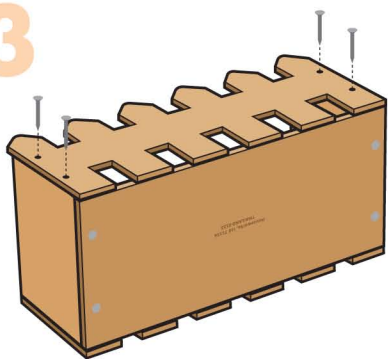


2



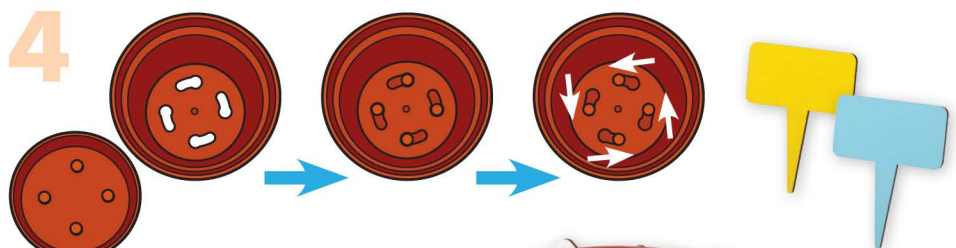
Step 2—Turn the project on an open end. Add thin lines of glue to the top edges of the side pieces. Place one of the picket fences on top. Make sure sides and bottom edges are even. Nail it in place with 4 nails.

3



Step 3—Turn the project over and repeat to attach the other picket fence.

Attention: If you are painting the project, paint and wait to dry completely before adding the pots with saucers and stickers.



Step 4—Add the stickers as shown. Add the saucers to the pots. Twist and lock them together. Drop them into the project.

(Ver el dorso para instrucciones en español.)

TSCA TITLE VI Compliant

