



**WARNING:**  
**CHOKING HAZARD**—Small Parts.  
 Not for children under 3 years.  
 The product contains functional sharp points and sharp edge. Not for children under 4 years.  
 Adult supervision required.



5+

# FLOWER PLANTER

Made in Thailand exclusively for The Home Depot by Houseworks, Ltd.  
2388 Pleasantdale Road, Atlanta, GA 30340 · 71168 · Thailand 1222

Scan with your camera or visit [homedepot.com/kids](http://homedepot.com/kids) for an easy-to-follow guide on how to assemble this kit, plus more fun videos.



## Contents:



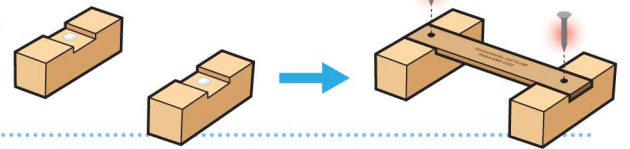
**ALSO NEEDED:**

- Fine Sandpaper
- Wood Glue
- Hammer

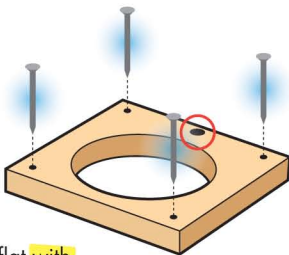
## Assembly:

Start with sanding each wood piece to remove any rough edges. Remember to sand in the direction of the wood grain. Glue and nail the pieces together. Allow glue to completely dry.

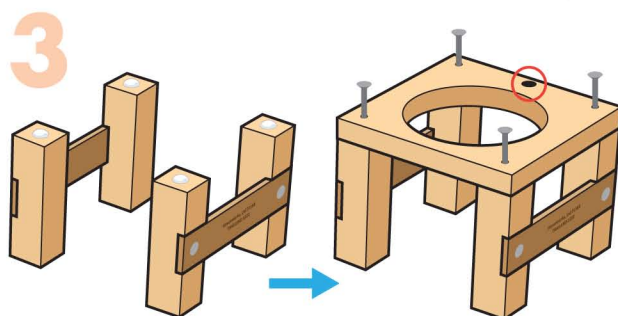
**1 Step 1**—Lay 2 legs down with grooves facing up. Add a little glue to each groove. Fit a brace into the grooves. Make sure side edges are even. Using 2 short nails, nail them together. Repeat with the other 2 legs and brace.



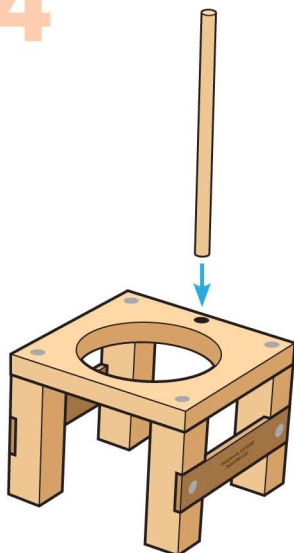
**2 Step 2**—Lay the base flat with stem hole facing up. Start 4 long nails.



**3 Step 3**—Stand the leg assemblies up with the braces facing out. Add a dot of glue on top of each leg. Place the base on top making sure the stem hole is on an open end and NOT on a side with a brace. Make sure outside edges are even. Carefully, nail them together.

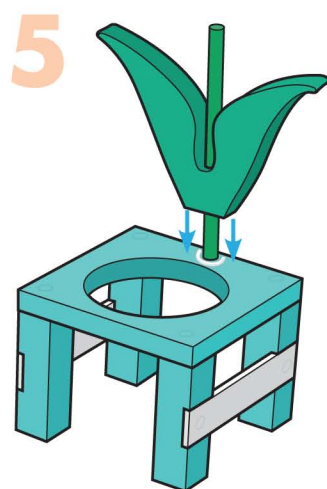


**4 Step 4**—Add a little glue into the stem hole in the base. Insert the stem into the stem hole.

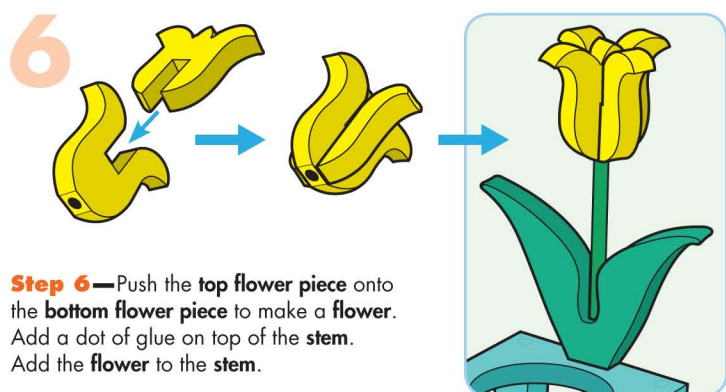


**Attention:** If you are painting the project, paint and let dry completely before adding the leaf, flower and pot with saucer.

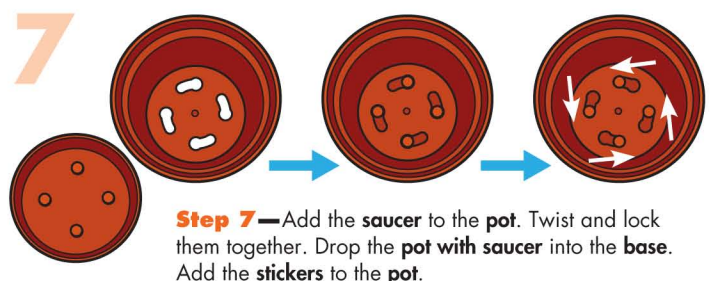
**5 Step 5**—Add a little glue on top of the base around the stem. Add the leaf to the stem and push it down all the way.



**6 Step 6**—Push the top flower piece onto the bottom flower piece to make a flower. Add a dot of glue on top of the stem. Add the flower to the stem.



**7 Step 7**—Add the saucer to the pot. Twist and lock them together. Drop the pot with saucer into the base. Add the stickers to the pot.



(Ver el dorso para instrucciones en español.)