



WARNING:
CHOKING HAZARD
 Toy contains small parts and functional/sharp points. Not for children under 3 years old. Adult supervision required.



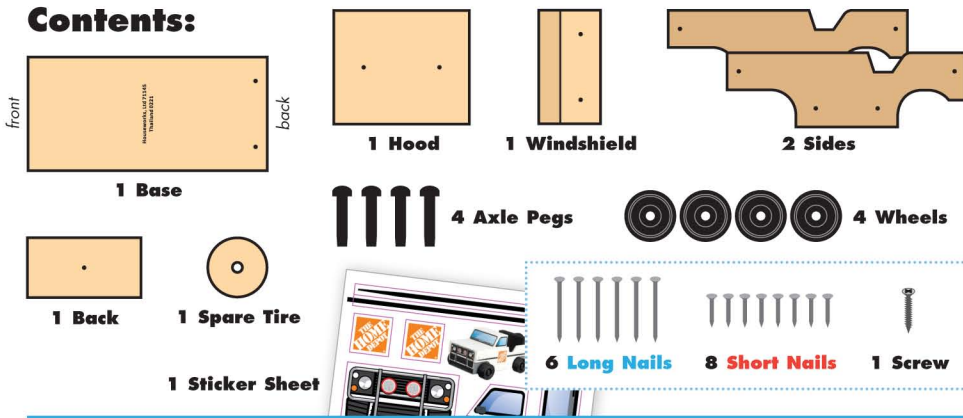
5+

SUV

Made in Thailand exclusively for The Home Depot by Houseworks, Ltd.
2388 Pleasantdale Road, Atlanta, GA 30340 · 71145 · Thailand 0221



Contents:



ALSO NEEDED:

- Fine Sandpaper
- Wood Glue
- Hammer
- #2 Phillips Screwdriver

Assembly:

Start with sanding each wood piece to remove any rough edges. Remember to sand in the direction of the wood grain. Glue and nail the pieces together. Allow glue to completely dry.

1 **Step 1**—Lay the **base piece** down with the nail holes and printed words facing up. Start **2 long nails**. Stand the **back piece** on a long edge. **The side with the screw hole is the back side.** Add a thin line of glue to the top edge. Place the nailed back end of the **base piece** on top. Make sure back and side edges are even. Nail them together.

2 **Step 2**—Lay the **hood** and **windshield** down with the nail holes facing up. Start **4 long nails**.

3 **Step 3**—Turn the project over. Glue the **hood** on the **base piece** with front and side edges even. Nail them together. Glue the **windshield** on the **hood** with side and back edges even. Nail them together.

4 **Step 4**—Turn the project on an open side. Add a thin line of glue to the top edge of the **hood**. Place a **side piece** on top with front, back and bottom edges even. Nail it in place with **4 short nails**. Turn the project over and repeat to attach the other **side piece**.

5 **Step 5**—Using a #2 Phillips Screwdriver, attach the **spare tire** to the **back piece** with a screw.

Attention: If you are painting the project, **DO NOT** paint inside or around the peg holes. Painting inside or around the peg holes make it difficult to insert axle pegs. Allow the paint to dry completely.

6 **Step 6**—Slide an **axle peg** through each **wheel**. Put a dot of glue on the end of each **axle peg** and insert them into the peg holes. Tap with a **hammer** if necessary. Add the **stickers** as shown.

(Ver el dorso para instrucciones en español.)

TSCA TITLE VI Compliant

