

PUTTING GREEN

Made in Thailand exclusively for The Home Depot by Houseworks, Ltd.
2388 Pleasantdale Road, Atlanta, GA 30340 • 71169 • Thailand 0123

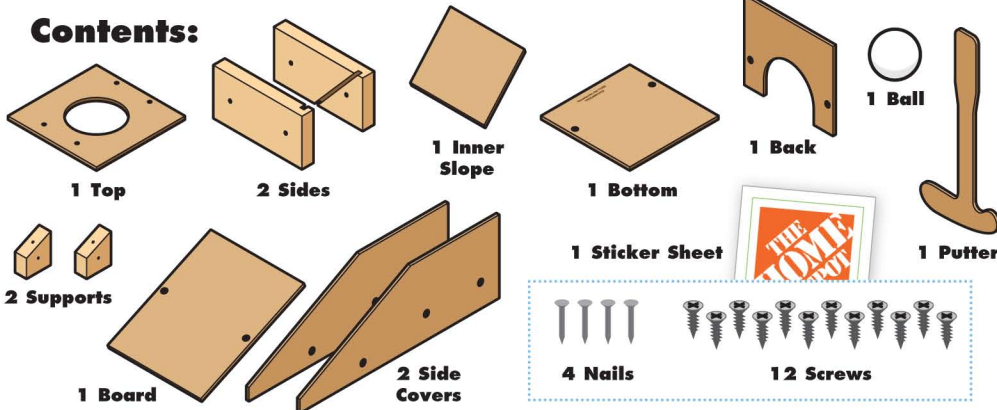
Scan with your camera or visit
homedepot.com/kids for
an easy-to-follow guide on how to
assemble this kit, plus more fun videos.



Finished example.



Contents:



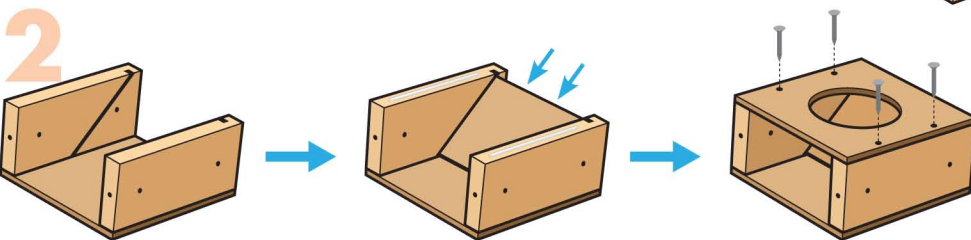
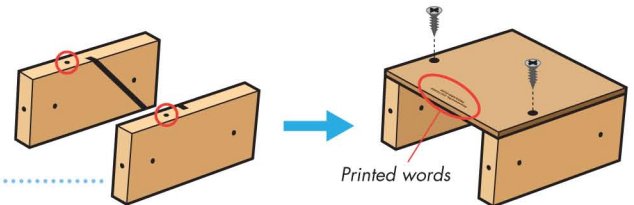
ALSO NEEDED:

- Fine Sandpaper
- Wood Glue
- Hammer
- #2 Phillips Screwdriver

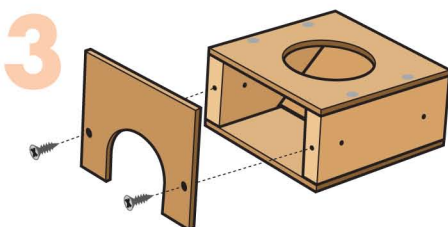
Assembly:

Start with sanding each wood piece to remove any rough edges. Remember to sand in the direction of the wood grain. Glue and nail the pieces together. Allow glue to completely dry.

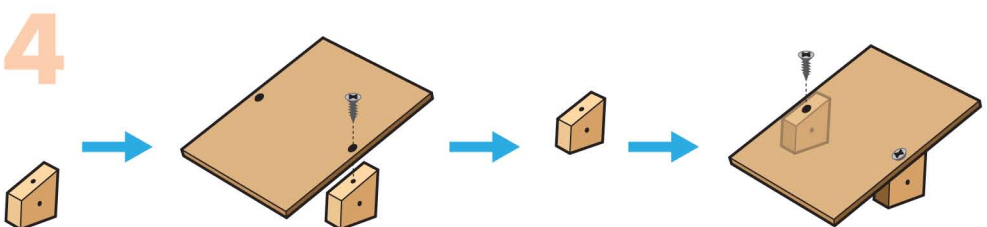
Step 1—Stand both side pieces up on long edges. Make sure screw holes are facing up and slots are facing in. Place the bottom piece on top with the screw holes matching. Attach them together with 2 screws using a #2 Phillips screwdriver.



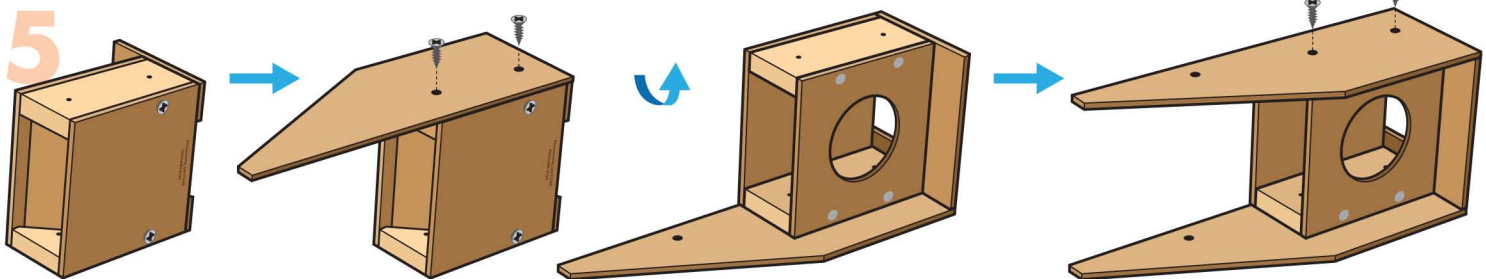
Step 2—Turn the project over. Slide the inner slope into the slots. Add thin lines of glue to the top edge of the side pieces. Place the top piece on top. Make sure nail holes are on the side pieces and outside edges are even. Using 4 nails, nail them together.



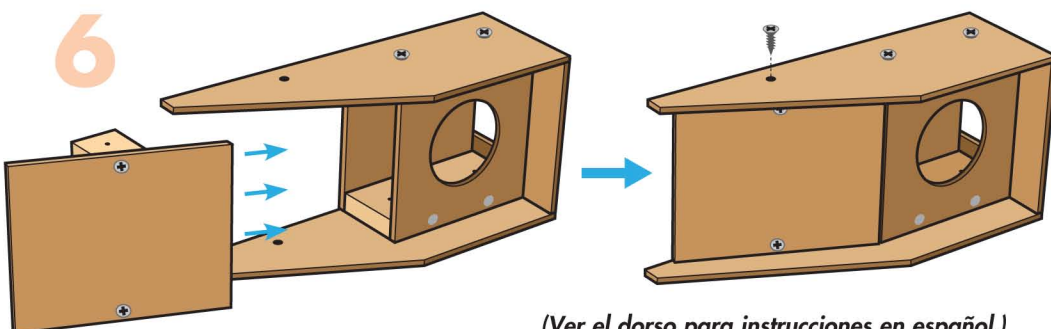
Step 3—Match the screw holes in the back piece to the screw holes in the back edge of the side pieces. Attach them together with 2 screws.



Step 4—Stand one of the support pieces up with the angled edge with a screw hole on top. Align the screw hole in the angled edge to one of the screw holes in the board. Attach them together with a screw. Repeat to attach the other support piece to form a slope.



Step 5—Turn the project on one side. Place one of the side covers on top with back and bottom edges even and the screw holes are matching. Attach them together with 2 screws. Turn the project over and repeat to attach the other side cover.



Step 6—Insert the slope in between the side covers. Adjust to align the screw holes in the side covers and the screw holes in the support pieces. Attach them together with a screw on each side.

Attention: If you are painting the project, paint and let dry completely before adding the sticker.

(Ver el dorso para instrucciones en español.)