

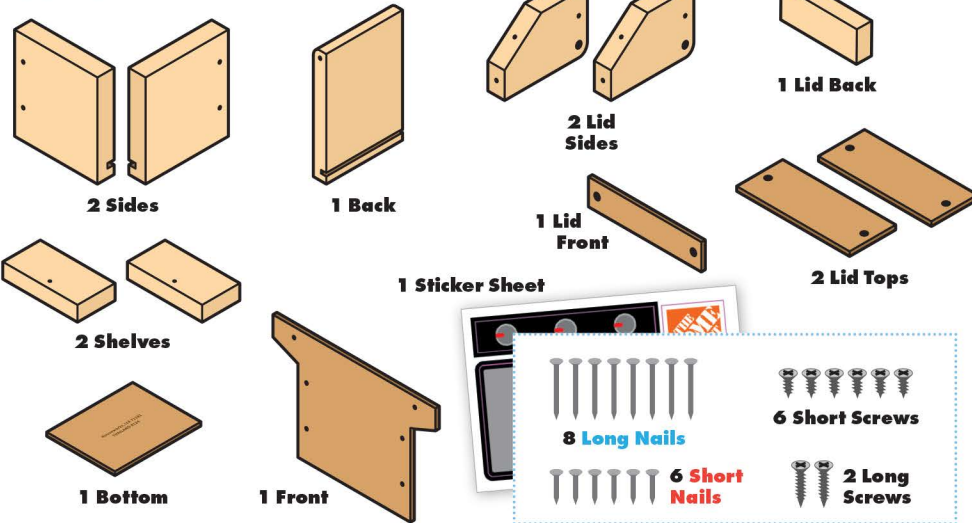
# GRILL GIFT CARD BOX

Made in Thailand exclusively for The Home Depot by Houseworks, Ltd.  
 2388 Pleasantdale Road, Atlanta, GA 30340 · 71181 · Thailand 0124

Finished example.



## Contents:

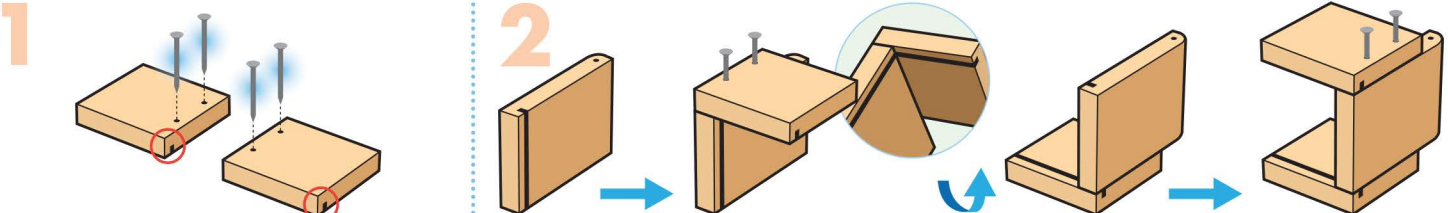


Scan with your camera or visit [homedepot.com/kids](http://homedepot.com/kids) for an easy-to-follow guide on how to assemble this kit, plus more fun videos.

- ALSO NEEDED:**
- Fine Sandpaper
  - Wood Glue
  - Hammer
  - #2 Phillips Screwdriver

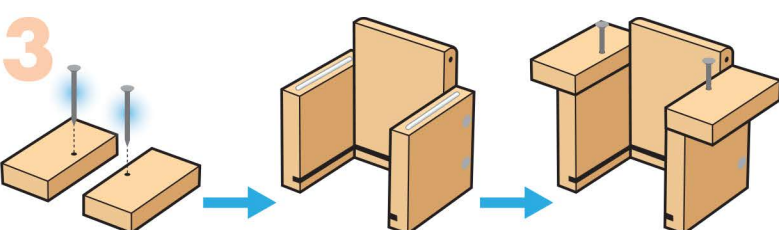
## Assembly:

Start with sanding each wood piece to remove any rough edges. Remember to sand in the direction of the wood grain. Glue and nail the pieces together. Allow glue to completely dry.

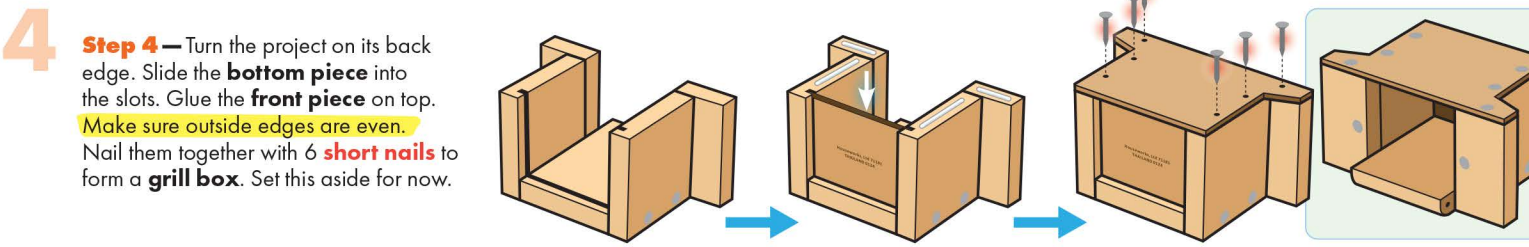


**Step 1** — Lay both side pieces flat with slots facing down. Start 4 long nails.

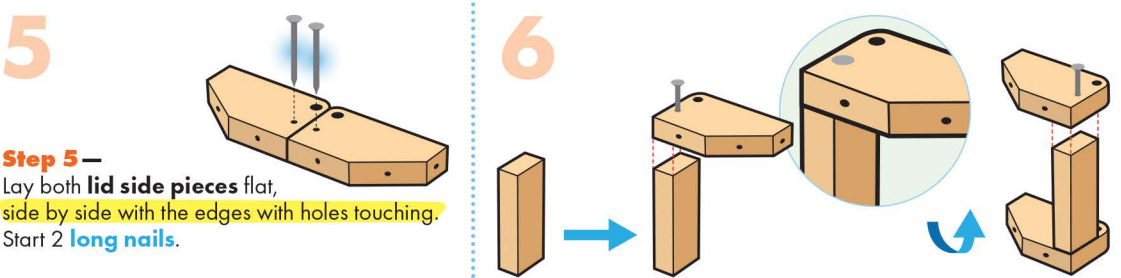
**Step 2** — Stand the back piece up on a long edge. Place one side piece on top with the slots matching. Make sure back and bottom edges are even. Nail them together. Turn the project over. Repeat to attach the other side piece.



**Step 3** — Lay both shelves flat with holes facing up. Start 2 long nails. Stand the project up. Add thin lines of glue on top edge of the side pieces. Place each shelf on top of each side piece. Make sure edges are even. Nail them together.

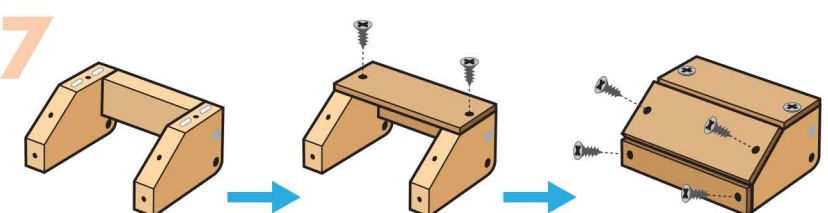


**Step 4** — Turn the project on its back edge. Slide the bottom piece into the slots. Glue the front piece on top. Make sure outside edges are even. Nail them together with 6 short nails to form a grill box. Set this aside for now.

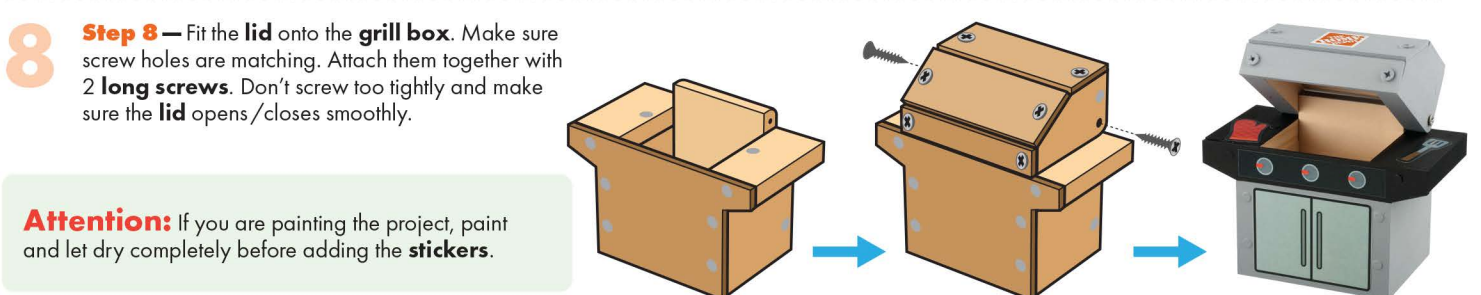


**Step 5** — Lay both lid side pieces flat, side by side with the edges with holes touching. Start 2 long nails.

**Step 6** — Stand the lid back piece up. Place one lid side piece on top. Make sure the corner edges are even. Nail them together. Turn the project over. Repeat to attach the other lid side piece.



**Step 7** — Turn the project right side up. Glue one lid top piece on top. Make sure screw holes are matching. Attach them together with 2 short Phillips Screwdriver. Repeat to attach the other lid top piece and the lid front piece to form a lid.



**Step 8** — Fit the lid onto the grill box. Make sure screw holes are matching. Attach them together with 2 long screws. Don't screw too tightly and make sure the lid opens/closes smoothly.

**Attention:** If you are painting the project, paint and let dry completely before adding the stickers.