



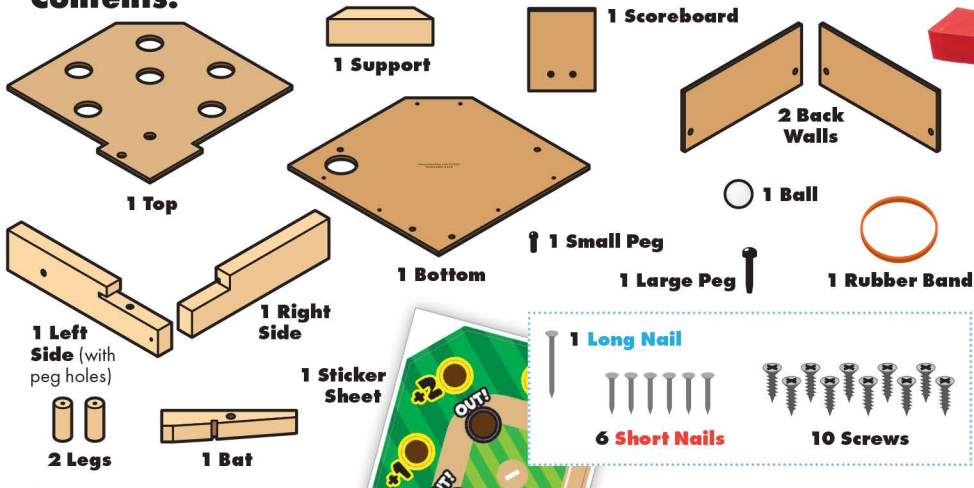
WARNING:
CHOKING HAZARD—Toy contains a small ball and small parts. Not for children under 3 years.

The product contains functional sharp points and sharp edge. Not for children under 4 years. Adult supervision required.

BASEBALL GAME

Made in Thailand exclusively for The Home Depot by Houseworks, Ltd.
2388 Pleasantdale Road, Atlanta, GA 30340 · 71193 · Thailand 0125

Contents:



Finished example.



Scan or visit homedepot.com/kids for more projects and activities.

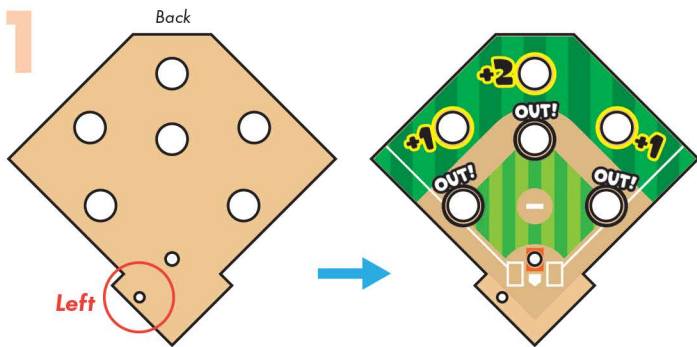


ALSO NEEDED:

- Fine Sandpaper
- Wood Glue
- Hammer
- #2 Phillips Screwdriver

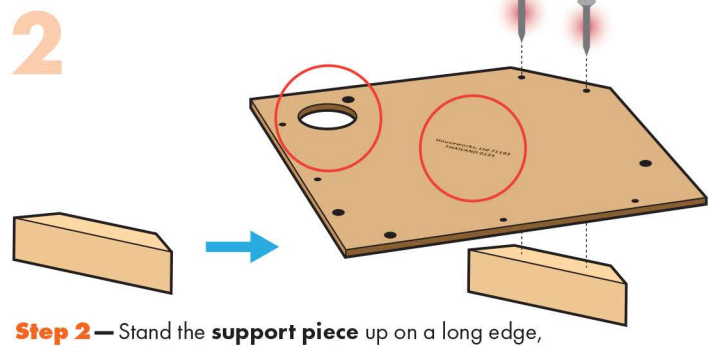
Assembly:

Start with sanding each wood piece to remove any rough edges. Remember to sand in the direction of the wood grain. Glue and nail the pieces together. Allow glue to completely dry.



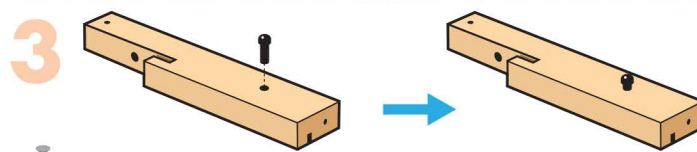
Step 1 — Lay the top piece flat. The cut-off corner is the back edge. **IMPORTANT:** Ensure the side with the peg hole is on the left.

Carefully peel off the field sticker from its backing. Match the hole shapes and apply the field sticker to the top piece. Set this aside for now.

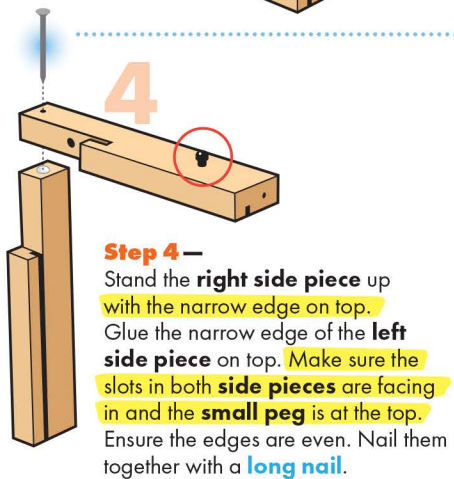


Step 2 — Stand the support piece up on a long edge, with all screw holes facing outward.

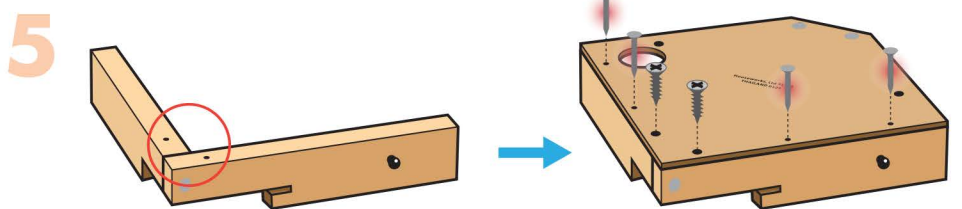
Place the bottom piece on top of the support piece. **IMPORTANT:** Ensure the printed words are face up and the large hole is on the left. Make sure the back and angled edges are aligned. Secure them together with 2 short nails.



Step 3 — Lay the left side piece flat with the peg hole facing up. Insert the small peg and carefully tap it with a hammer.

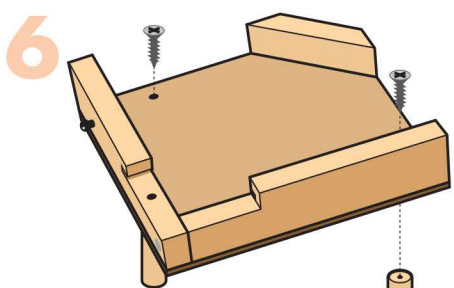


Step 4 — Stand the right side piece up with the narrow edge on top. Glue the narrow edge of the left side piece on top. Make sure the slots in both side pieces are facing in and the small peg is at the top. Ensure the edges are even. Nail them together with a long nail.

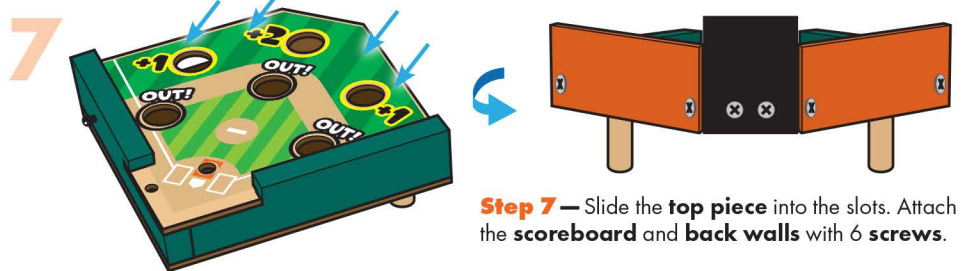


Step 5 — Lay the nailed side pieces down with 2 screw holes facing up. The corner edge is the front edge. Pick up the bottom piece with the support piece facing down. Aligning the front corner edges, place the bottom piece on top of the side pieces. The screw holes in the bottom piece and side pieces should match.

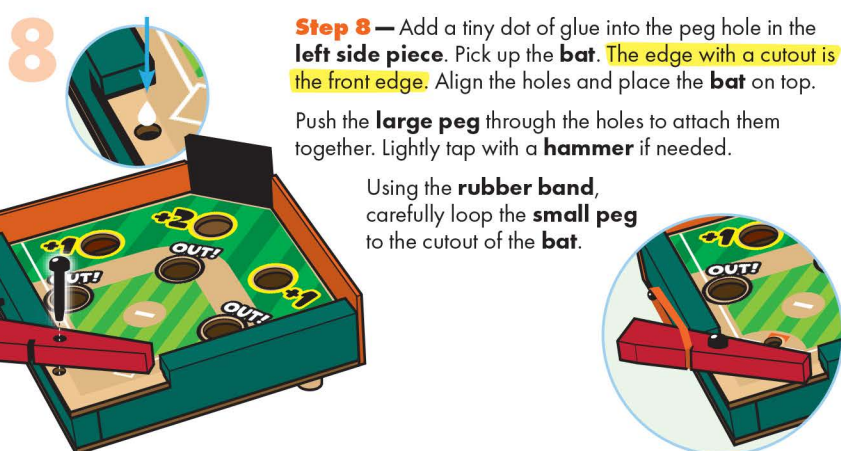
Attach them together with 2 screws using a #2 Phillips screwdriver. Make sure the outside edges are even. Nail them together with 4 short nails.



Step 6 — Turn the project over. Attach the leg on each side with a screw.



Step 7 — Slide the top piece into the slots. Attach the scoreboard and back walls with 6 screws.



Step 8 — Add a tiny dot of glue into the peg hole in the left side piece. Pick up the bat. The edge with a cutout is the front edge. Align the holes and place the bat on top.

Push the large peg through the holes to attach them together. Lightly tap with a hammer if needed.

Using the rubber band, carefully loop the small peg to the cutout of the bat.



Step 9 — Apply the logo sticker of your choice on the field, making sure not to cover any holes. Add the remaining stickers as shown.

At Home: Place the ball on the small hole at the top of the home plate. Flick the bat to try to score while avoiding the "OUT!" holes.

(Ver el dorso para instrucciones en español.)