



WARNING: CHOKING HAZARD

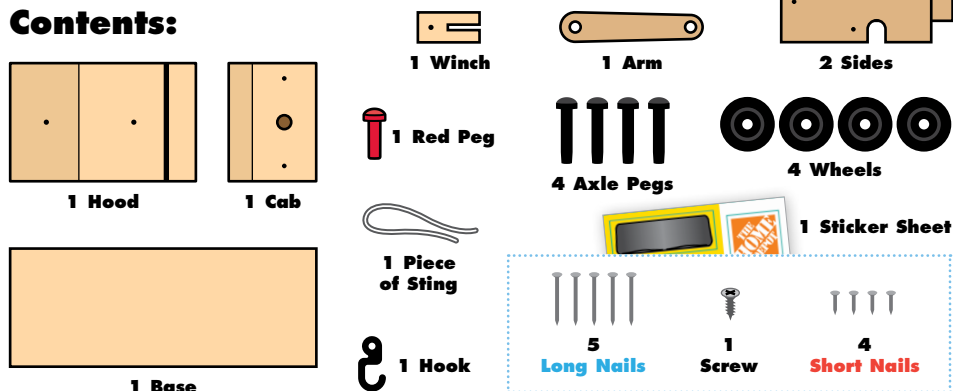
Toy contains small parts and functional/sharp points.
Not for children under 4 years old.
Adult supervision required.



TOW TRUCK

Made in Chonburi, Thailand exclusively for The Home Depot by Houseworks, Ltd
2388 Pleasantdale Road, Atlanta, GA 30340 • batch #171121 • date: 03/19

Contents:



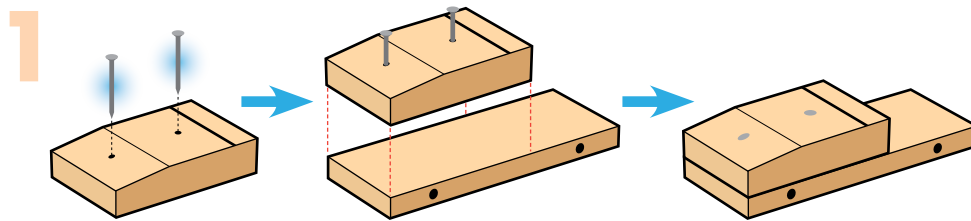
Finished example.

ALSO NEEDED:

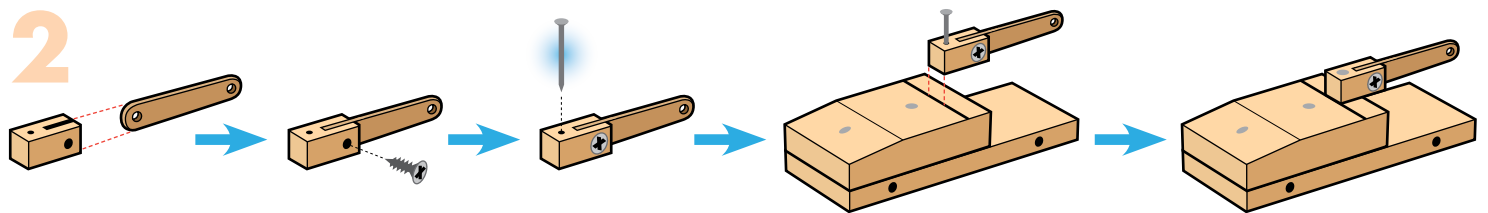
- Fine Sandpaper
- Wood Glue
- Hammer
- #2 Phillips Screwdriver

Assembly:

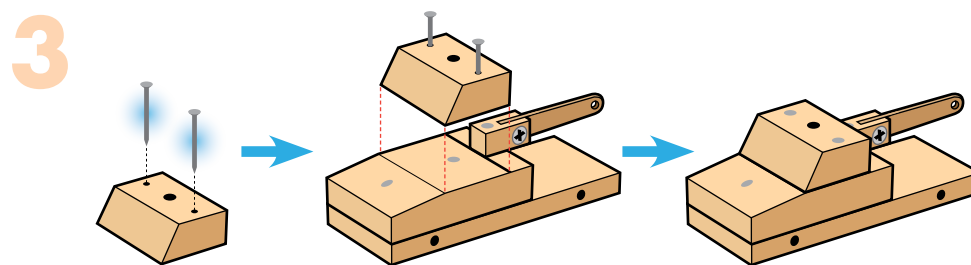
Start with sanding each wood piece to remove any rough edges. Remember to sand in the direction of the wood grain. Glue and nail the pieces together. Allow glue to completely dry.



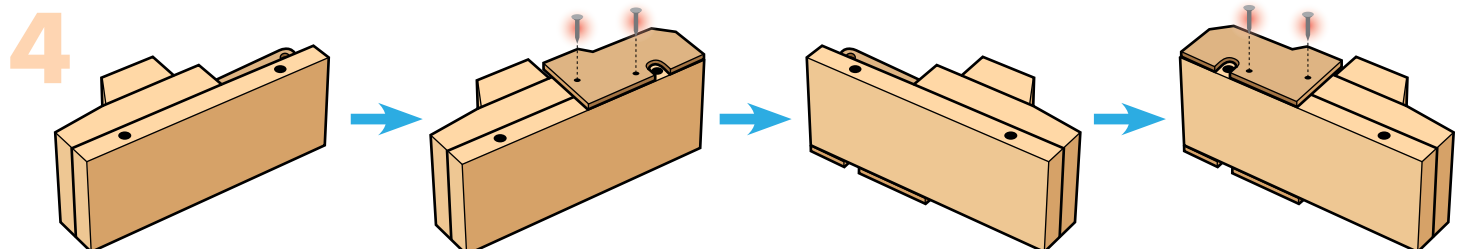
Step 1 — Lay the hood down with the nail holes and the line on top. Start 2 long nails. Lay the base down. Glue the hood on top with the angled end even with the front edge and side edges even. Finish nailing.



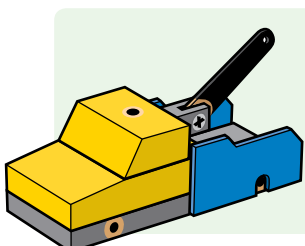
Step 2 — Slide the wider end of the arm into the cutout in the winch and align the holes. Attach them together with a screw using a #2 Phillips screwdriver. Turn the winch over with the nail hole on top. Start 1 long nail. Using the line as a guide, center and glue it on the back edge of the hood. Finish nailing.



Step 3 — Lay the cab down with the nail holes on top. Start 2 long nails. Using the line as a guide, glue it on top of the hood against the winch. Make sure side edges are even. Finish nailing.



Step 4 — Turn the project on one side. Place one of the side pieces on top of the back end with edges even and the axle hole not covered. Using 2 short nails, nail it in place. Turn it over and repeat to attach the other side piece.



Attention: If you are painting the project, **DO NOT paint** inside or around the peg holes. Painting inside or around the peg holes make it difficult to insert pegs. Also, **DO NOT paint** the joint area of the winch and arm to make sure the arm moves. Allow the paint to dry completely.

5

Step 5 — Put a dot of glue on the end of the red peg and insert it into the hole on top of the cab. Tap with a hammer if necessary. Slide an axle peg through each wheel. Put a dot of glue on the end of each axle peg and insert them into axle holes. Tap with a hammer if necessary. Add the hook to the arm with the string. Apply the stickers as shown above.

(Ver el dorso para instrucciones en español.)

TSCA TITLE VI Compliant