



**WARNING:**  
**CHOKING HAZARD** — Small Parts.  
Not for children under 3 years.  
The product contains functional sharp points and sharp edge. Not for children under 4 years.  
Adult supervision required.



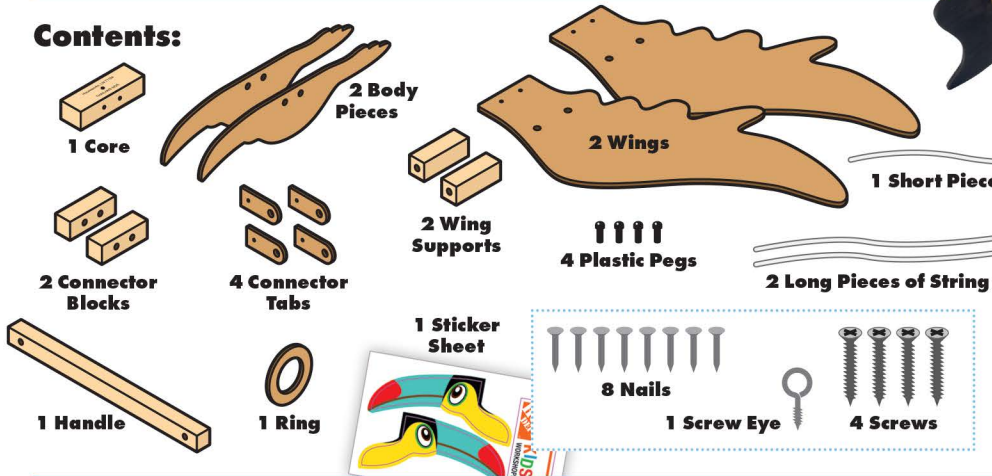
# TOUCAN MOBILE

Made in Thailand exclusively for The Home Depot by Houseworks, Ltd.  
2388 Pleasantdale Road, Atlanta, GA 30340 • 71194 • Thailand 0225

Scan or visit [homedepot.com/kids](https://homedepot.com/kids) for more projects and activities.



## Contents:

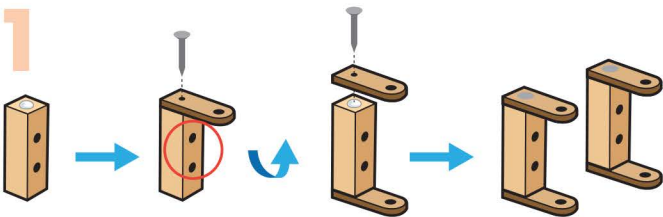


## ALSO NEEDED:

- Fine Sandpaper
- Wood Glue
- Hammer
- #2 Phillips Screwdriver

## Assembly:

Start with sanding each wood piece to remove any rough edges. Remember to sand in the direction of the wood grain. Glue and nail the pieces together. Allow glue to completely dry.

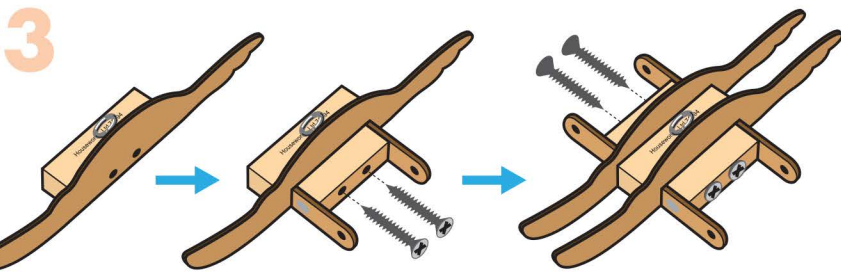
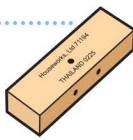


**Step 1** — Stand a **connector block** upright and glue a **connector tab** on top, with the rounded edge overhanging the side with two holes. Align the corners evenly and carefully nail them together.

Flip the **connector block** over and nail a **connector tab** on the opposite side to complete the first **connector**.

Repeat to assemble a second **connector**.

**Step 2** — Lay the **core** with the printed words and the hole facing up. Insert the **screw eye** into the hole.



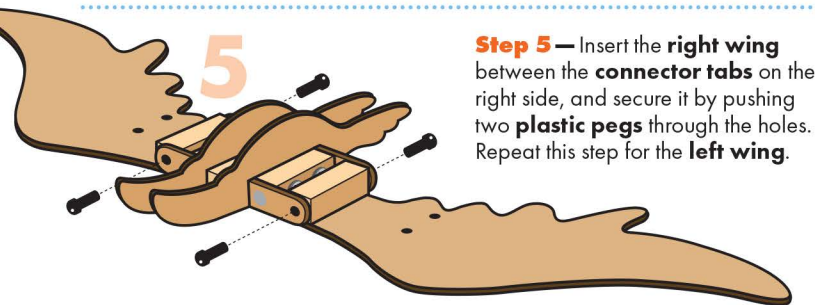
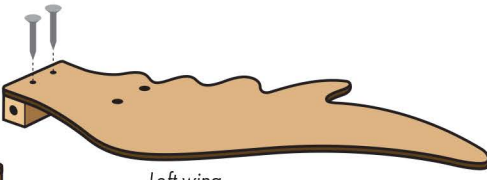
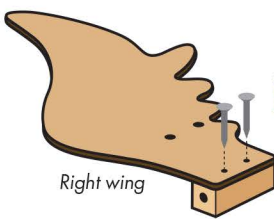
**Step 3** — Place one **body piece** **upside down** on one side of the **core**, followed by a **connector**, aligning the screw holes in all three pieces.

Secure them together with two **screws** using a **#2 Phillips screwdriver**.

Repeat on the opposite side, attaching the other **body piece** and **connector**. Ensure both **body pieces** face the same direction.

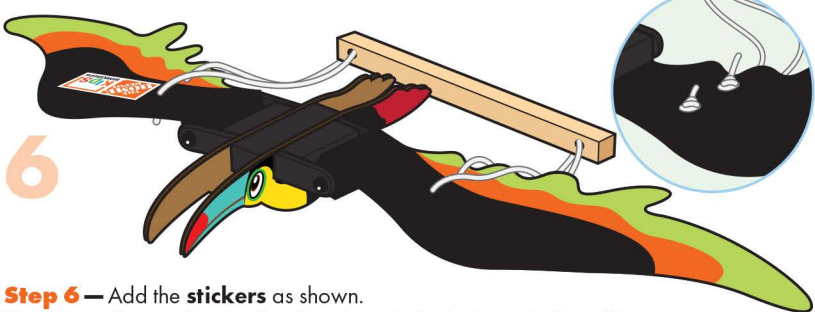
**Step 4** — Place one **wing support** flat and glue the straight edge of a **wing** on top, aligning the corner edges. Carefully secure them together with two **nails**.

Repeat this process for the opposite **wing** to make one **right wing** and one **left wing**, so you don't end up with two of the same.

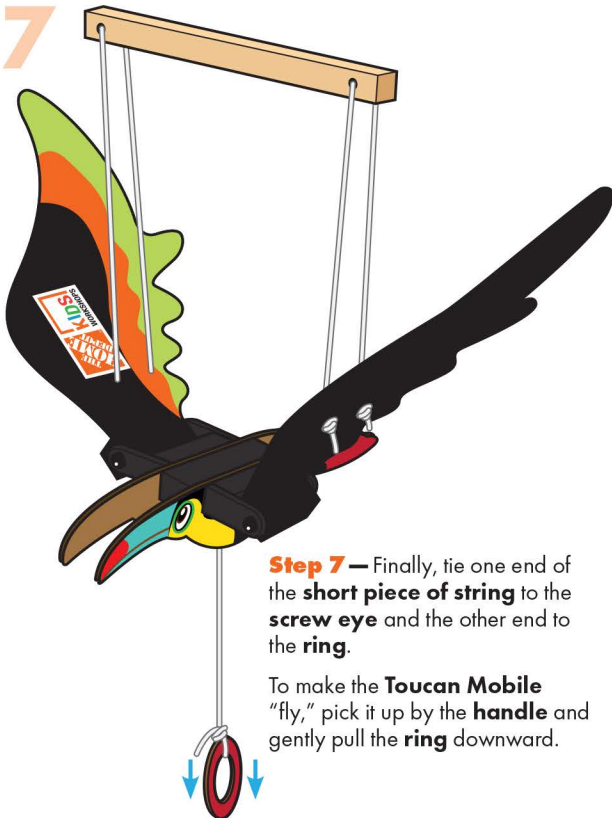


**Step 5** — Insert the **right wing** between the **connector tabs** on the right side, and secure it by pushing two **plastic pegs** through the holes. Repeat this step for the **left wing**.

**Attention:** If you are painting the **project**, be careful not to clog any holes with paint. Allow the paint to dry completely before moving on to the next steps.



**Step 6** — Add the **stickers** as shown. Thread two **long pieces of string** through the holes in the **handle**, then tie the loose ends under each **wing** to attach the **handle**.



**Step 7** — Finally, tie one end of the **short piece of string** to the **screw eye** and the other end to the **ring**.

To make the **Toucan Mobile** "fly," pick it up by the **handle** and gently pull the **ring** downward.

(Ver el dorso para instrucciones en español.)

TSCA TITLE VI Compliant