



## WARNING: CHOKING HAZARD

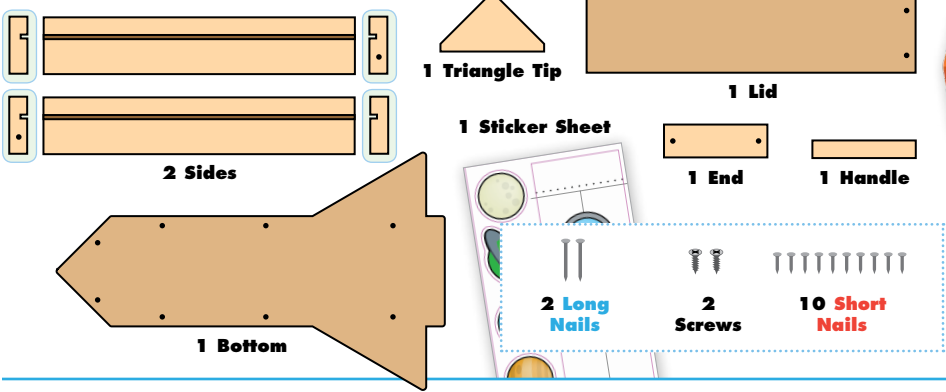
Contains small parts and functional/sharp points.  
Not for children under 4 years old.  
Adult supervision required.



# ROCKET PENCIL BOX

Made in Chonburi, Thailand exclusively for The Home Depot by Houseworks, Ltd  
2388 Pleasantdale Road, Atlanta, GA 30340 • batch #171122 • date: 04/19

### Contents:



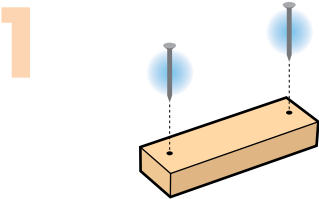
Finished example.

### ALSO NEEDED:

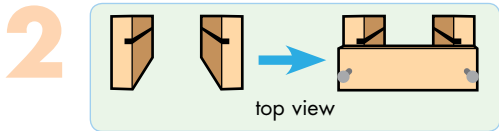
- Fine Sandpaper
- Wood Glue
- Hammer
- #2 Phillips Screwdriver

### Assembly:

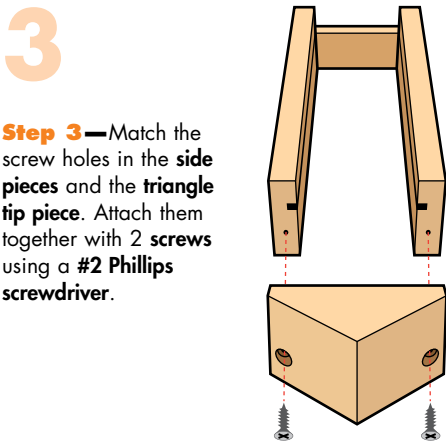
Start with sanding each wood piece to remove any rough edges. Remember to sand in the direction of the wood grain. Glue and nail the pieces together. Allow glue to completely dry.



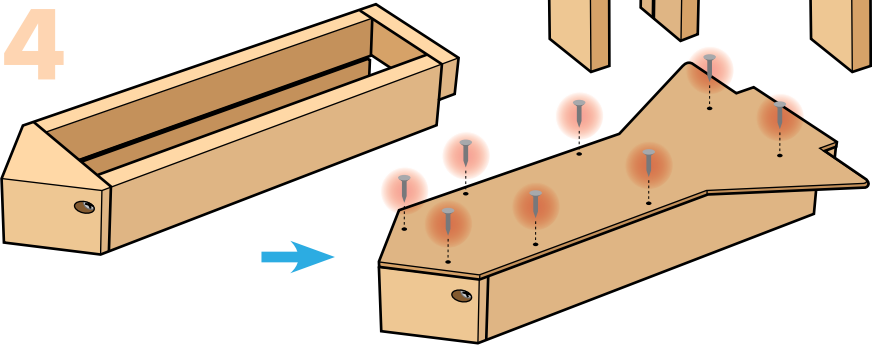
**Step 1**—Lay the end piece flat with the nail holes on top. Start 2 long nails into the nail holes.



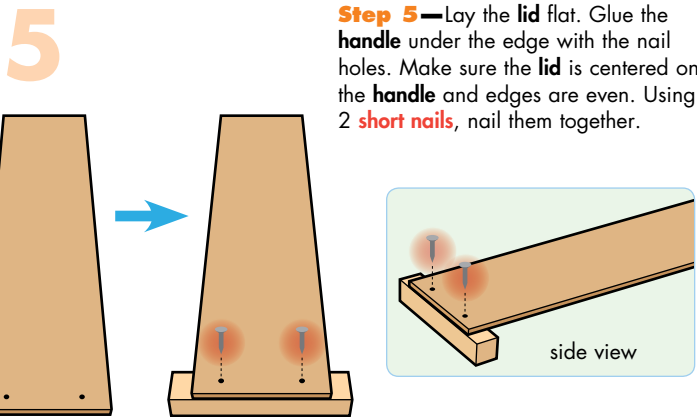
**Step 2**—Stand both side pieces up with the ends with the screw hole down and the slots facing each other. Glue the nailed end piece on top (DON'T cover the slots). Make sure bottom and side edges are even. Carefully, nail them together.



**Step 3**—Match the screw holes in the side pieces and the triangle tip piece. Attach them together with 2 screws using a #2 Phillips screwdriver.



**Step 4**—Turn the project upside down with the slots toward bottom. Glue the bottom piece on top. Make sure front, back and side edges are even. Using 8 short nails, nail it in place.



**Step 5**—Lay the lid flat. Glue the handle under the edge with the nail holes. Make sure the lid is centered on the handle and edges are even. Using 2 short nails, nail them together.

**Attention:** If you are painting the project, **paint ONLY the handle and outside of the pencil box. Do not paint the lid or slots.** Painting the lid and slots will make the lid stick in place! Allow the paint to dry completely.



(Ver el dorso para instrucciones en español.)