



WARNING:
CHOKING HAZARD—Small Parts.
Not for children under 3 years.

The product contains functional sharp points and sharp edge. Not for children under 4 years.
Adult supervision required.

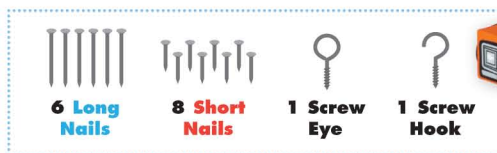
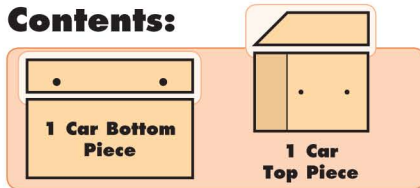


5+

SUMMER CAMPER

Made in Thailand exclusively for The Home Depot by Houseworks, Ltd.
2388 Pleasantdale Road, Atlanta, GA 30340 • 71159 • Thailand 0422

Contents:



Finished example.

Scan with your camera or visit [homedepot.com/kids](https://www.homedepot.com/kids) for an easy-to-follow guide on how to assemble this kit, plus more fun videos.

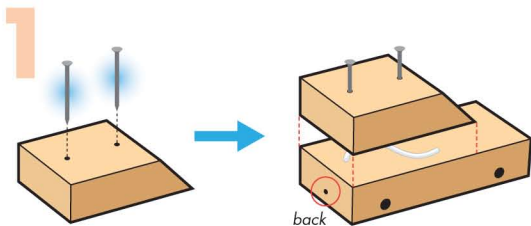


ALSO NEEDED:

- Fine Sandpaper
- Wood Glue
- Hammer

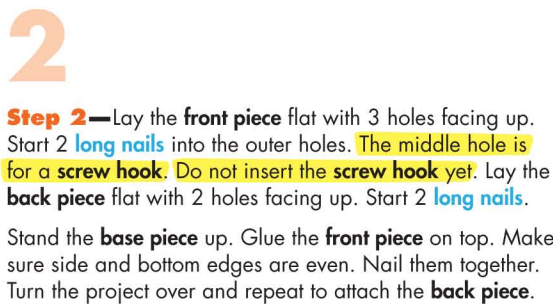
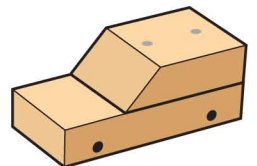
Assembly:

Start with sanding each wood piece to remove any rough edges. Remember to sand in the direction of the wood grain. Glue and nail the pieces together. Allow glue to completely dry.



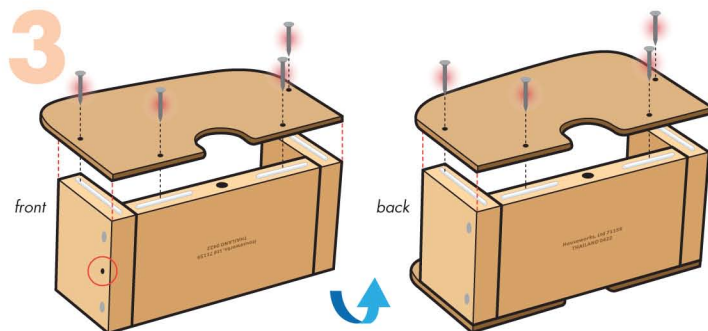
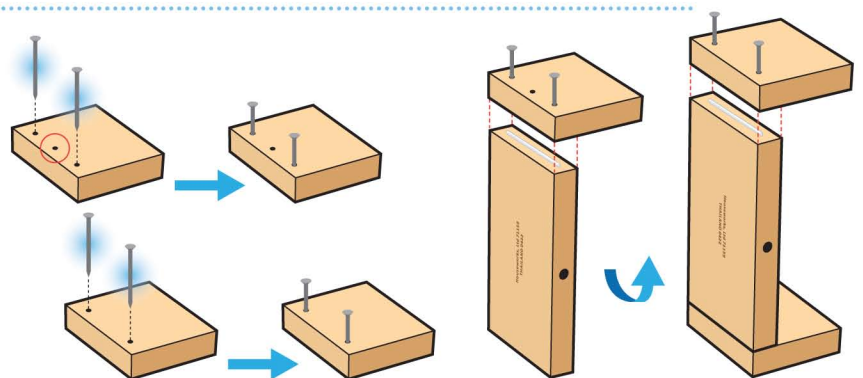
Step 1 — Lay the car top piece down with holes facing up. Start 2 long nails.

Lay the car bottom piece flat with peg holes close to the bottom. The end with a hole is the back. Glue the car top piece on top of the car bottom piece with the straight end at back. Make sure side and back edges are even. Nail them together to form a car. Set aside the car for now.



Step 2 — Lay the front piece flat with 3 holes facing up. Start 2 long nails into the outer holes. The middle hole is for a screw hook. Do not insert the screw hook yet. Lay the back piece flat with 2 holes facing up. Start 2 long nails.

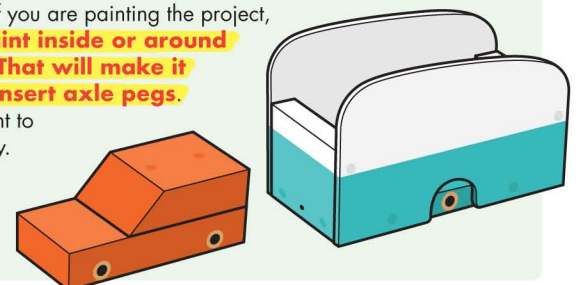
Stand the base piece up. Glue the front piece on top. Make sure side and bottom edges are even. Nail them together. Turn the project over and repeat to attach the back piece.



Step 3 — Turn the project on an open end. Pick up one side piece. The taller edge is the front. Glue the side piece on top of the project. Make sure the taller edge of the side piece is along the front piece with the screw hook hole. Make sure side and bottom edges are even. Nail them together with 4 short nails.

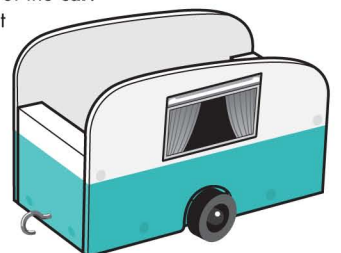
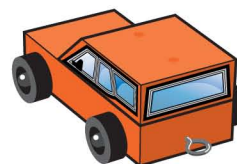
Turn the project over and repeat to attach the other side piece to form a camper.

Attention: If you are painting the project, **DO NOT** paint inside or around peg holes. That will make it difficult to insert axle pegs. Allow the paint to dry completely.



Step 4 — Add stickers as shown. Slide an axle peg through each wheel. Put a dot of glue on the end of each axle peg and insert them into the peg holes. Tap with a hammer if necessary.

Twist the screw eye into the hole in the back of the car. Twist the screw hook into the hole in the front of the camper.



(Ver el dorso para instrucciones en español.)

TSCA TITLE VI Compliant