

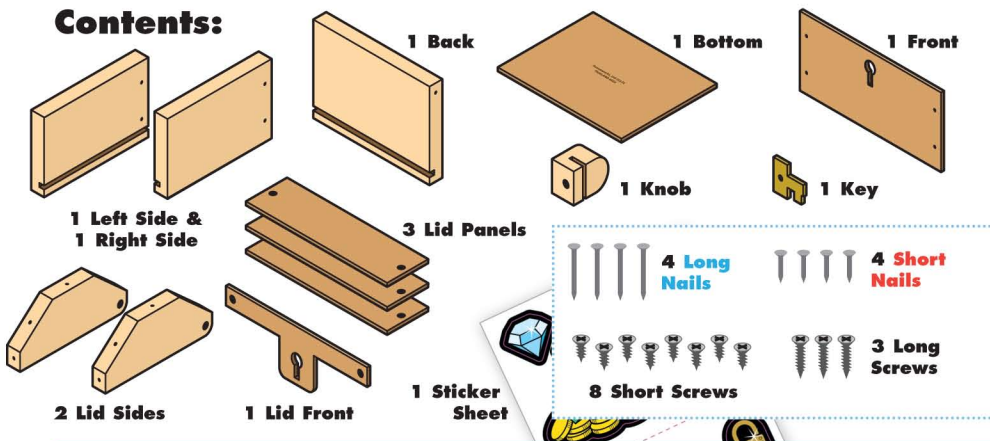
# TREASURE CHEST

Made in Thailand exclusively for The Home Depot by Houseworks, Ltd.  
 2388 Pleasantdale Road, Atlanta, GA 30340 · 71171 · Thailand 0323

Finished example.



## Contents:



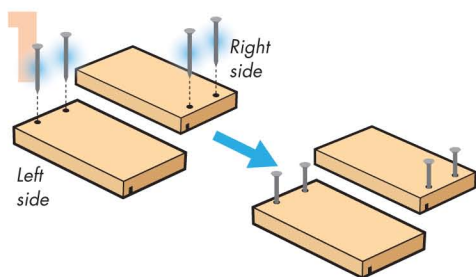
Scan with your camera or visit [homedepot.com/kids](http://homedepot.com/kids) for an easy-to-follow guide on how to assemble this kit, plus more fun videos.

## ALSO NEEDED:

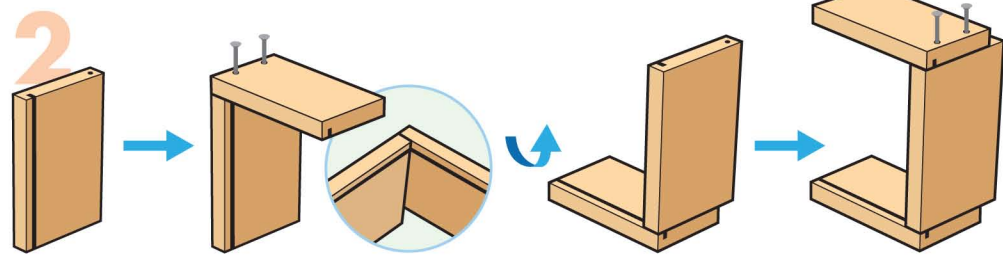
- Fine Sandpaper
- Wood Glue
- Hammer
- #2 Phillips Screwdriver

## Assembly:

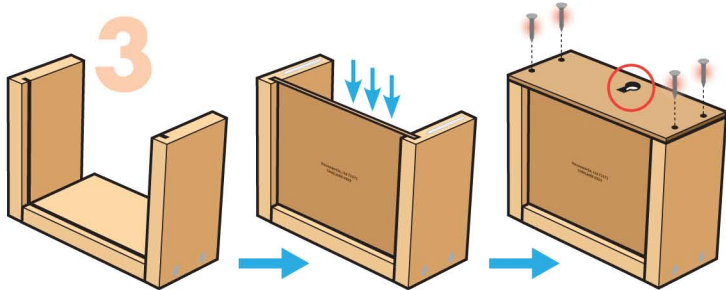
Start with sanding each wood piece to remove any rough edges. Remember to sand in the direction of the wood grain. Glue and nail the pieces together. Allow glue to completely dry.



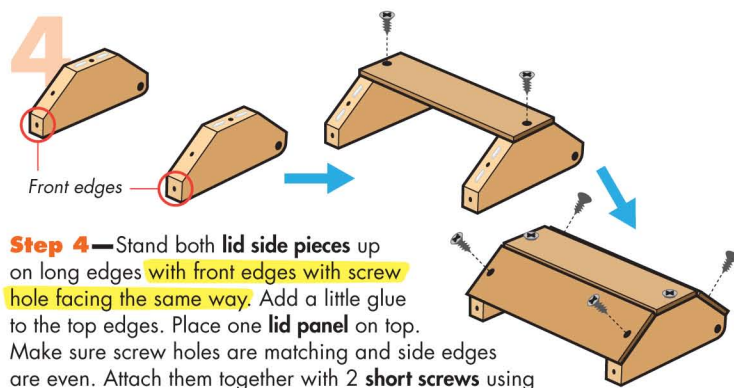
**Step 1**—Lay both side pieces down with slots facing down. Start 4 long nails.



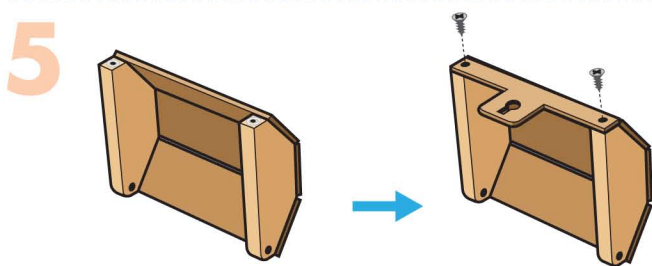
**Step 2**—Stand the back piece up. Place the left side piece on top. Make sure the slots are matching and back and bottom edges are even. Nail them together. Turn the project over. Repeat to attach the right side piece.



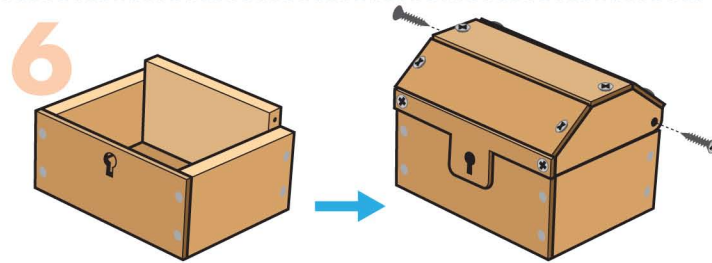
**Step 3**—Turn the project on its back edge. Slide the bottom piece into the slots. Add thin lines of glue to the top edge of the side pieces. Place the front piece on top with key hole at the top edge. Make sure all edges are even. Nail them together with 4 short nails to form a box. Set aside the box until step 6.



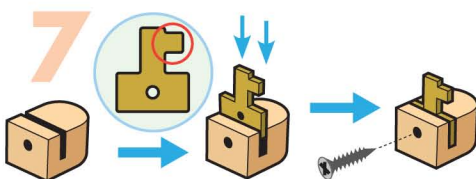
**Step 4**—Stand both lid side pieces up on long edges with front edges with screw hole facing the same way. Add a little glue to the top edges. Place one lid panel on top. Make sure screw holes are matching and side edges are even. Attach them together with 2 short screws using a #2 Phillips Screwdriver. Repeat to attach 2 other lid panels.



**Step 5**—Add a little glue to the front edge of the lid side pieces. Place the lid front piece on top with key hole at the bottom. Carefully, attach them together with 2 short screws to complete a lid.



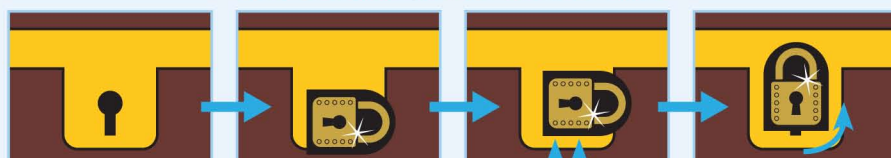
**Step 6**—Fit the lid onto the box. Make sure screw holes are matching. Attach them together with 2 long screws. Don't screw too tightly and make sure the lid opens/closes smoothly.



**Step 7**—Lay the knob down with slot facing up. Pick up the key piece. Make sure the tab is on the right side. Push the key piece into the slot all the way. Attach them together with a long screw.

**Attention:** If you are painting the project, paint and let dry completely before adding the stickers.

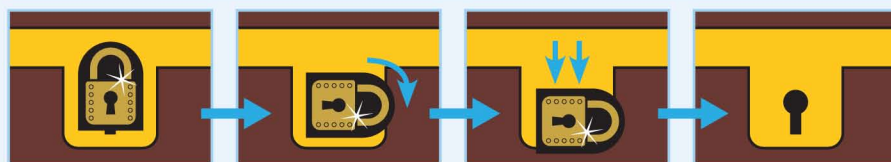
## How to Lock/Open the Treasure Chest



To lock, hold the key turned 90° clockwise and insert it into the key hole all the way,

slide up

then rotate 90° counterclockwise.



To open, rotate the key 90° clockwise,

slide down

then remove the key.

(Ver el dorso para instrucciones en español.)