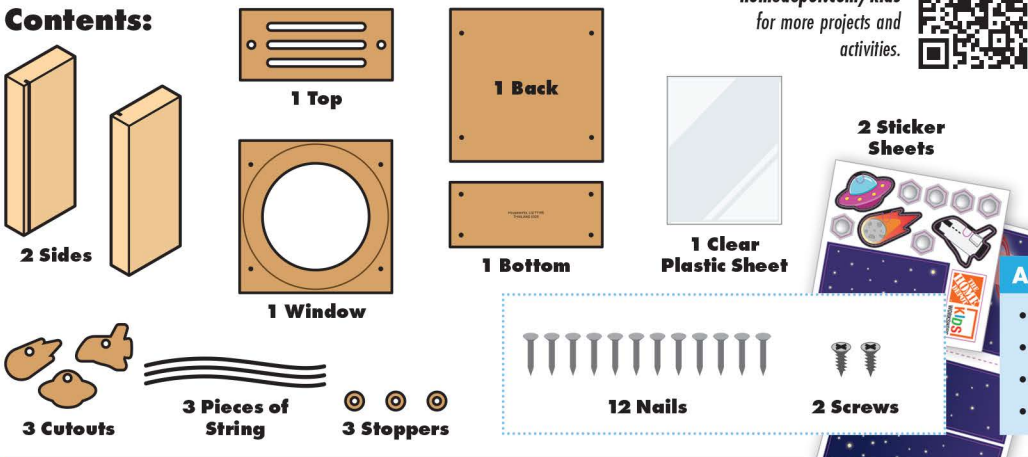


# SPACE ODYSSEY

Made in Thailand exclusively for The Home Depot by Houseworks, Ltd.  
 2388 Pleasantdale Road, Atlanta, GA 30340 • 71195 • Thailand 0325

## Contents:



Scan or visit  
[homedepot.com/kids](https://homedepot.com/kids)  
 for more projects and activities.



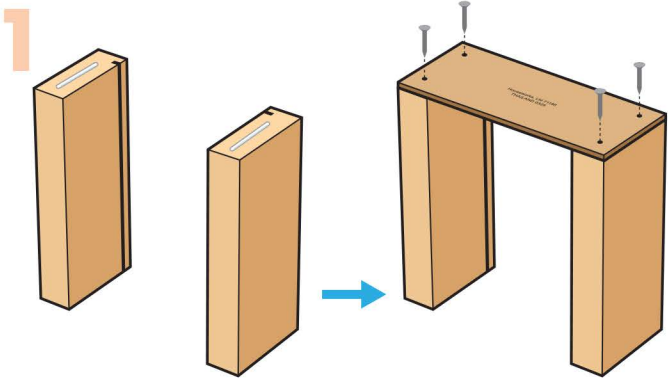
Finished example.

## ALSO NEEDED:

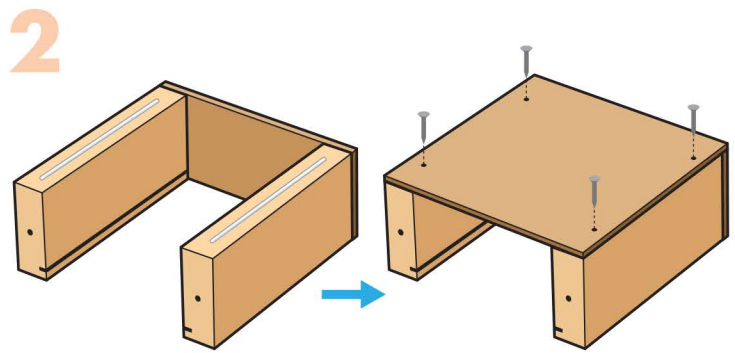
- Fine Sandpaper
- Wood Glue
- Hammer
- #2 Phillips Screwdriver

## Assembly:

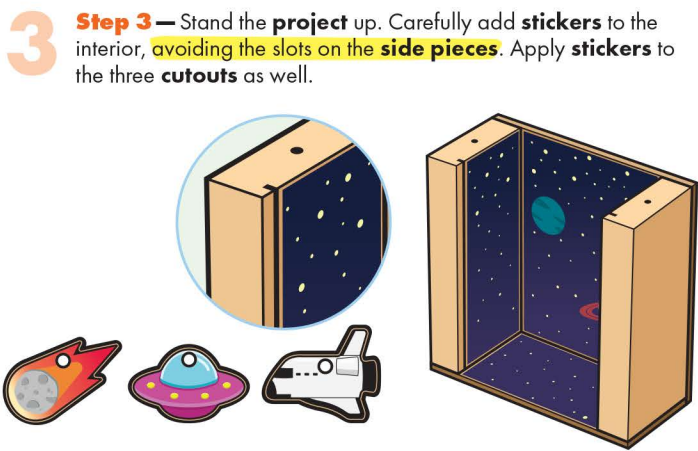
Start with sanding each wood piece to remove any rough edges. Remember to sand in the direction of the wood grain. Glue and nail the pieces together. Allow glue to completely dry.



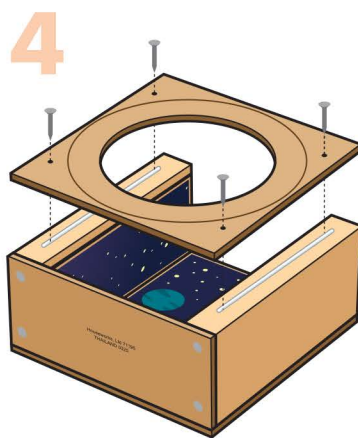
**Step 1** — Stand both **side pieces** upright with the screw holes facing down and the slots facing inward. Glue the **bottom piece** on top, ensuring the corner edges are even. Nail them together with four **nails**.



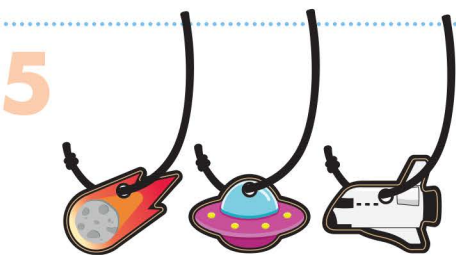
**Step 2** — Lay the **project** down with the slotted edge down. Glue the **back piece** on top, ensuring the nail holes are on top of the **side pieces** and the corner edges are even. Nail them together with four **nails**.



**Step 3** — Stand the **project** up. Carefully add **stickers** to the interior, avoiding the slots on the **side pieces**. Apply **stickers** to the three **cutouts** as well.



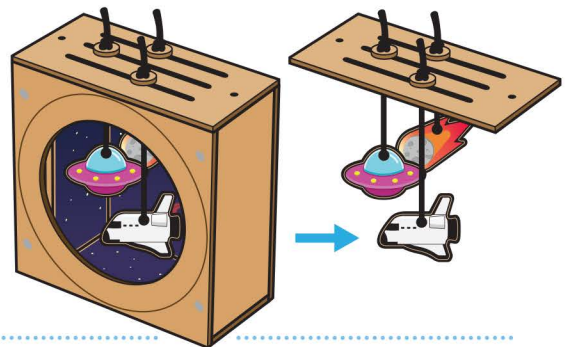
**Step 4** — Lay the **project** down with the open front facing up. Glue the **window** on top, ensuring the etched circle for painting is facing up and the nail holes are on top of the **side pieces**. Make sure the corner edges are even, then nail it in place with four **nails**.



**Step 5** — Thread one **piece of string** through the hole in each **cutout** and tie the end securely.

**Step 6** — Place the slotted **top piece** on top of the **project**. Take one **cutout with string**, and thread the loose end up through a slot in the **top piece** and then through a **stopper**. Tie a knot at your desired length. Repeat for the other two **cutouts with string**.

Set the **top piece with hanging cutouts** aside until the final step.



**Attention:** If you are painting the **project**, **paint only the exterior**. **Avoid clogging the slots for the clear plastic sheet with paint**. Allow the paint to dry completely before moving on to the next steps.

**Step 7** — Peel off the blue protective sheet from both sides of the **clear plastic sheet**. Slide it into the slots.

Place the **top piece with hanging cutouts** on top of the **project**. Using a **#2 Phillips screwdriver**, attach it with two **screws**.

Apply the remaining **stickers**.



**At Home:** Trim any excess **string** at the top, if desired.

(Ver el dorso para instrucciones en español.)