



WARNING: CHOKING HAZARD

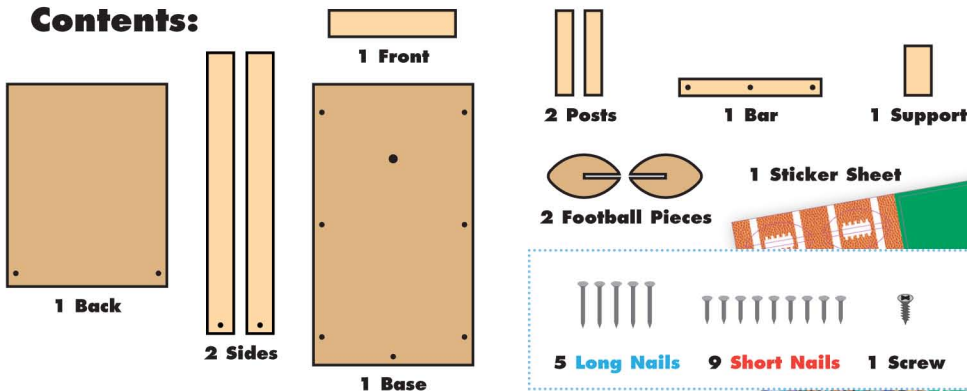
Toy contains small parts and functional/sharp points.
Not for children under 4 years old.
Adult supervision required.



FIELD GOAL GAME

Made in Chonburi, Thailand exclusively for The Home Depot by Houseworks, Ltd
2388 Pleasantdale Road, Atlanta, GA 30340 • batch #171111 • date: 05/18

Contents:



Finished example.

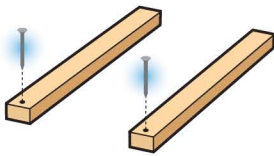
ALSO NEEDED:

- Safety Goggles
- Fine Sandpaper
- Wood Glue
- Hammer
- Phillips Head Screwdriver

Assembly:

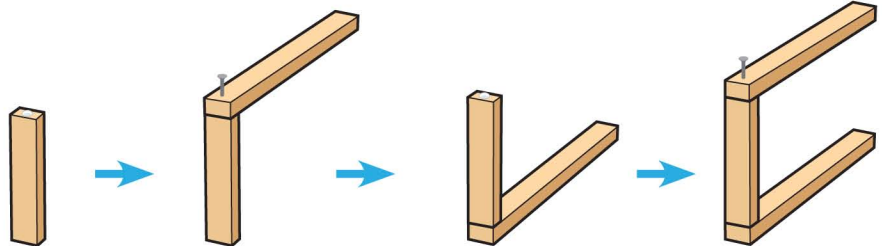
Start with sanding each wood piece to remove any rough edges. Remember to sand in the direction of the wood grain. Glue and nail the pieces together. Allow glue to completely dry.

1



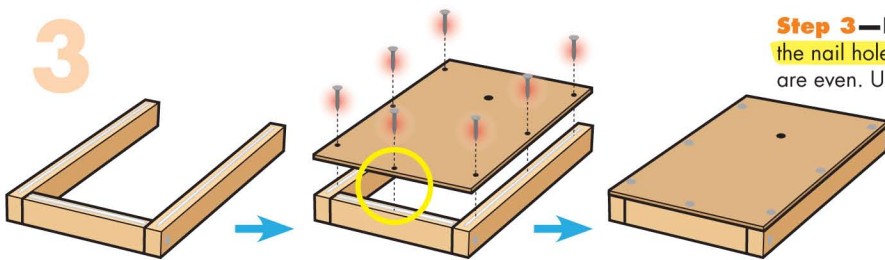
Step 1—Lay both side pieces down with the nail holes on top. Start 2 long nails.

2



Step 2—Stand the front piece up. Glue one nailed end of the side piece on top. Make sure outside edges are even. Finish nailing. Turn it over and repeat to attach the other side piece.

3

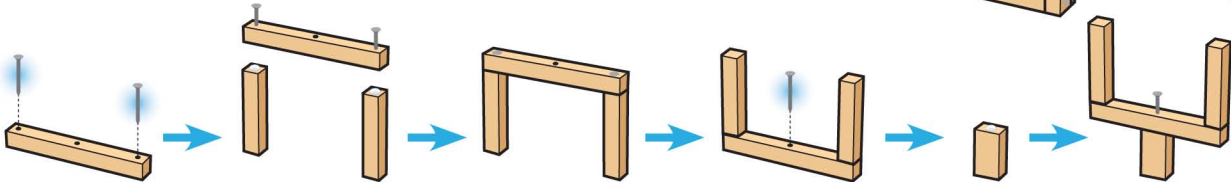


Step 3—Lay the project down. Glue the base piece on top. Make sure the nail hole on one end is on the front piece. Make sure outside edges are even. Using 7 short nails, nail it in place.

4

Step 4—Stand the project on the front edge. Add a little glue to the top edge of the side pieces. Match the nail holes in the back piece to the glued area. Make sure side and bottom edges are even. Using 2 short nails, nail it in place.

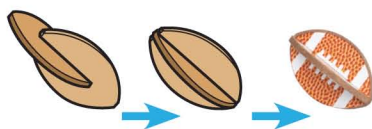
5



Step 5—Lay the bar down with the nail holes on top. Start 2 long nails into the nail holes on the ends. Stand both posts up. Glue the nailed bar on top. Make sure outside edges are even. Finish nailing to form an upside down "U" shape.

Turn the "U" shape over. Start a long nail into the remaining nail hole. Stand the support piece up with the screw hole at the bottom. Glue the "U" shape on top. Make sure the "U" shape is centered on the support piece and front and back edges are even. Finish nailing to make a goal post.

6



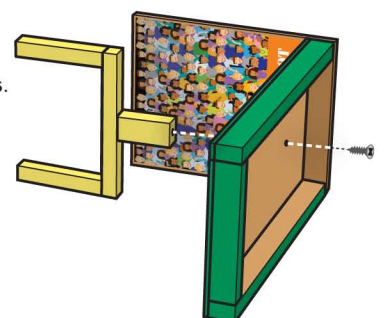
Step 6—Fit the 2 football pieces together at the cutout and push in all the way. Apply the football stickers to all sides of the football.

Attention: If you are painting the project, paint and wait to dry completely before adding the stickers to the back and base pieces and attaching the goal post.

7

Step 7—Add the stickers to the back and base pieces.

Start a screw from the bottom of the base piece. Carefully drive the screw to the screw hole in the goal post until the goal post is secure and doesn't move.



(Ver el dorso para instrucciones en español.)

California 93120 compliant for formaldehyde phase 2