

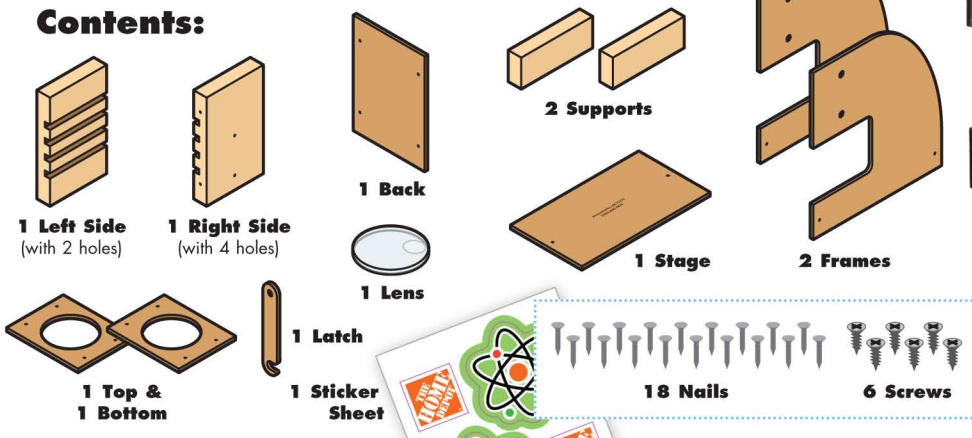
MICROSCOPE

Made in Thailand exclusively for The Home Depot by Houseworks, Ltd.
 2388 Pleasantdale Road, Atlanta, GA 30340 • 71172 • Thailand 0423



Scan with your camera or visit homedepot.com/kids for an easy-to-follow guide on how to assemble this kit, plus more fun videos.

Contents:

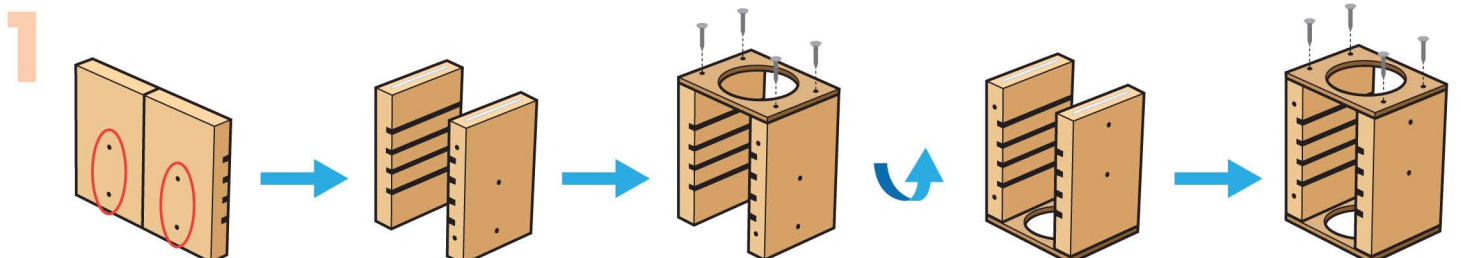


ALSO NEEDED:

- Fine Sandpaper
- Wood Glue
- Hammer
- #2 Phillips Screwdriver

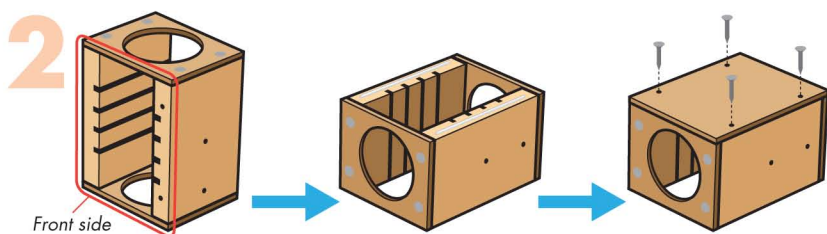
Assembly:

Start with sanding each wood piece to remove any rough edges. Remember to sand in the direction of the wood grain. Glue and nail the pieces together. Allow glue to completely dry.



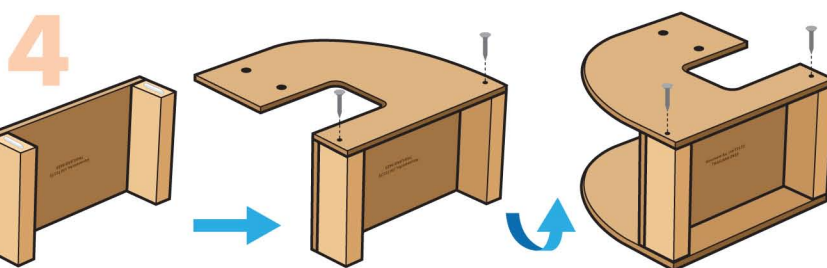
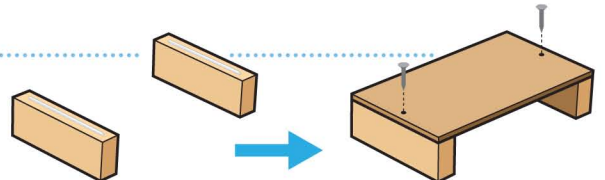
Step 1—Stand both side pieces up with the holes in side edges located toward bottom. Turn them inward so slots are facing in. Add thin lines of glue to the top edges.

Place the top piece on top. Make sure all edges are even. Nail them together. Turn the project over and repeat to glue and nail the bottom piece.



Step 2—Lay the project on its front. Make sure the holes in the front edge of the right side piece are facing down. Add thin lines of glue to the top edge of the side pieces. Place the back piece on top. Make sure all edges are even. Nail them together to form an observation box.

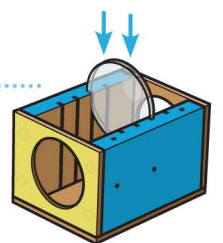
Step 3—Stand both supports up on long edges. Add thin lines of glue to the top edges. Place the stage on top. Make sure all edges are even. Nail them together.



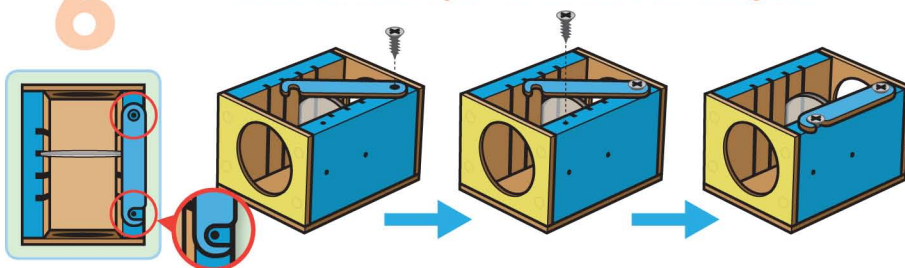
Step 4—Turn the project on one side. Add a little glue to the top edge of the supports. Pick up one frame. The straight edge with 2 holes is the bottom edge. Place the bottom edge of the frame on top of the project. Make sure front, back and bottom edges are even. Nail them together. Turn the project over and repeat to glue and nail the other frame.

Attention: If you are painting the project, **DO NOT paint the inside of the observation box or lens.** Let the paint dry completely.

Step 5—Lay the observation box on its back. Remove protective covering from the lens. Insert the lens into the slots.



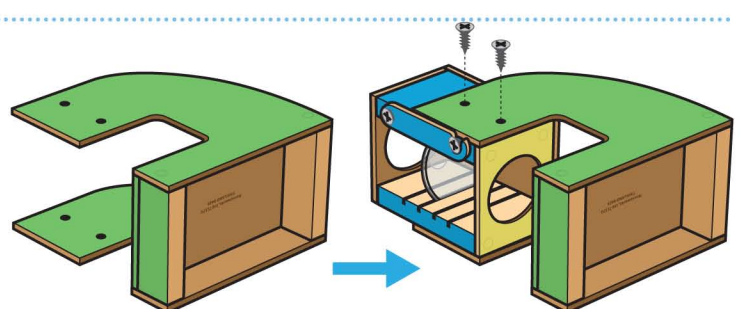
Step 6—Attach the latch to prevent the lens from sliding out.



Place the latch on top of the right side piece with the holes aligned. The cutout at the bottom should be open toward outer edge. First, screw a screw into the top hole using a #2 Phillips Screwdriver. Don't screw too tightly so that the latch can slide.

Screw a screw into the bottom hole. Don't screw all the way. This screw should be sticking out a little to lock the latch in place. Lock the latch.

Step 7—Place the observation box in between the frames. Align the holes in the observation box and frames. Attach them together with 2 screws from both sides. Add the stickers.



Carefully slide the latch when moving the lens to different slots. Then make sure to lock the latch to prevent the lens from sliding out.

(Ver el dorso para instrucciones en español.)

TSCA TITLE VI Compliant