



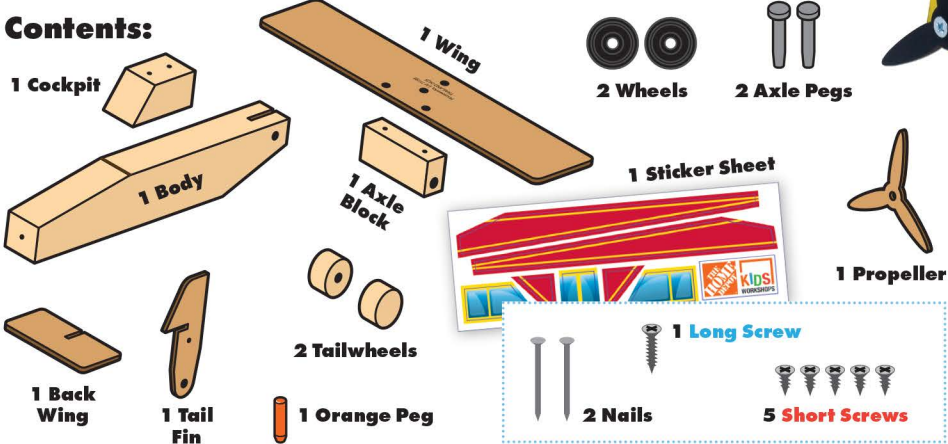
WARNING:
CHOKING HAZARD — Small Parts.
Not for children under 3 years.
The product contains functional sharp points and sharp edge. Not for children under 4 years.
Adult supervision required.



CROP DUSTER

Made in Thailand exclusively for The Home Depot by Houseworks, Ltd.
2388 Pleasantdale Road, Atlanta, GA 30340 • 71196 • Thailand 0425

Contents:



Finished example.



Scan or visit [homedepot.com/kids](https://www.homedepot.com/kids) for more projects and activities.

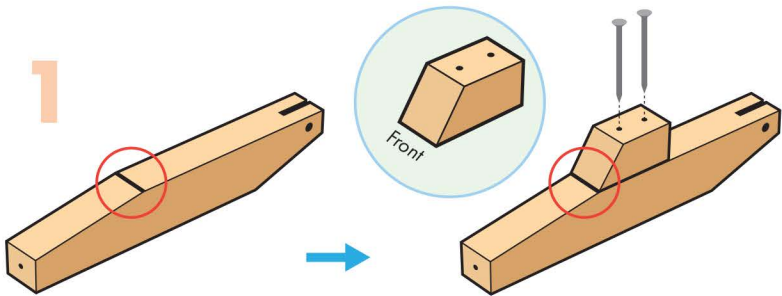
ALSO NEEDED:

- Fine Sandpaper
- Wood Glue
- Hammer
- #2 Phillips Screwdriver

Assembly:

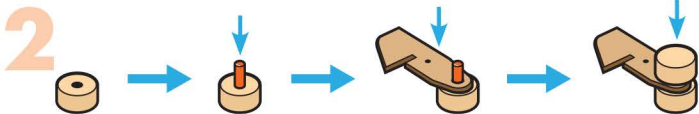
Start with sanding each wood piece to remove any rough edges. Remember to sand in the direction of the wood grain. Glue and nail the pieces together. Allow glue to completely dry.

1



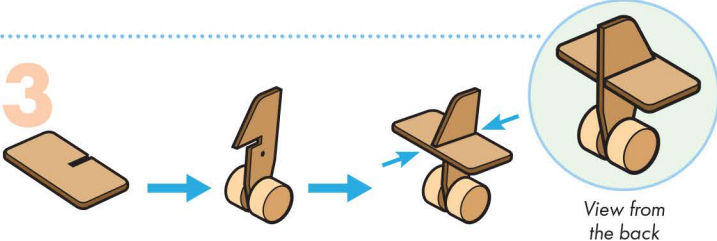
Step 1 — Place the **body** with the aiming line facing up (and the two screw holes facing down). Identify the **cockpit**. The angled edge is the front. Glue the **cockpit** on top, aligning the aiming line and angled front edge. Ensure the side edges are even. Nail them together with two **nails**.

2



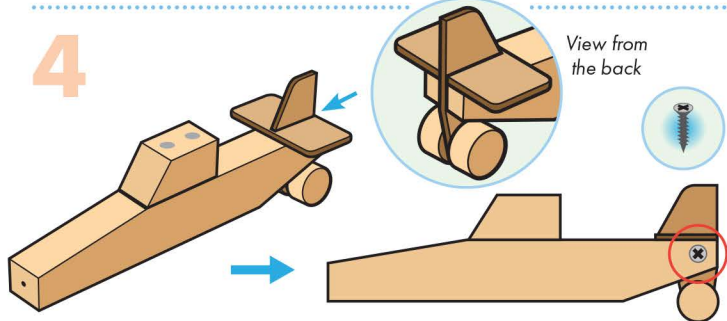
Step 2 — Lay a **tailwheel** flat and insert the **orange peg** into its hole. Slide the **tail fin** onto the **peg** through its bottom hole. Attach the second **tailwheel** on the **peg**, securing it with a **hammer** if needed.

3



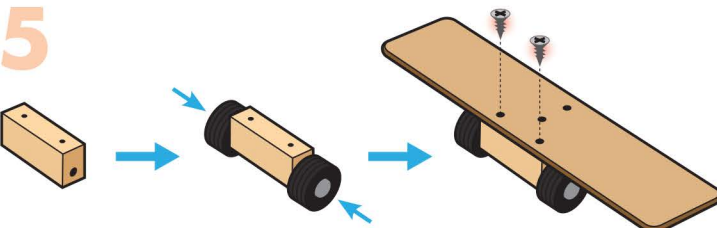
Step 3 — Fit the **back wing**'s cutout into the **tail fin**'s cutout, and push them together until their back edges are even.

4



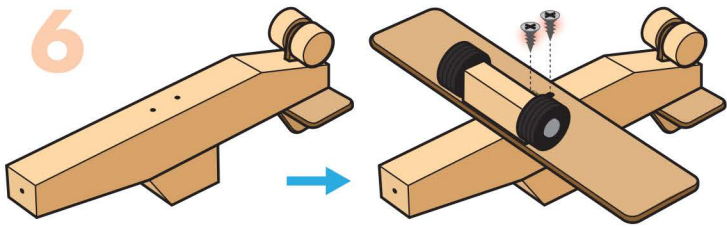
Step 4 — Insert the **tail assembly** into the cutout in the tail of the **body**. Push all the way so the back edges are even. Secure them together with a **long screw** and a **#2 Phillips screwdriver**.

5



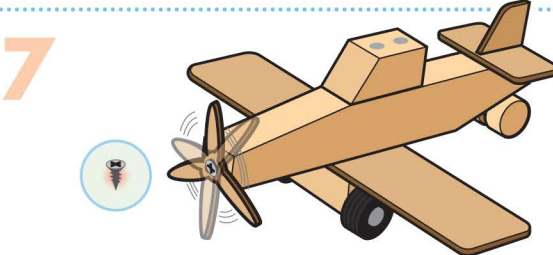
Step 5 — Slide an **axle peg** through each **wheel**. Put a dot of glue on the end of each **axle peg** and insert them into the peg holes in the **axle block**. Tap with a **hammer** if necessary. Align the screw holes of the **wing** and **axle block**, and attach them with two **short screws**.

6



Step 6 — Flip the **project** over and secure the **wing** to the **body** with two more **short screws**. Make sure the **wheels** are positioned at the front edge of the **wing**.

7



Step 7 — Use a **short screw** to attach the **propeller** to the **body**'s nose. Adjust the **screw** to allow the **propeller** to spin freely.

(Ver el dorso para instrucciones en español.)

TSCA TITLE VI Compliant

Attention: If you are painting the **project**, paint it and allow the paint to dry completely before applying the **stickers** as shown above.