



**WARNING:**  
**CHOKING HAZARD**  
Toy contains small parts and functional/sharp points. Not for children under 3 years old. Adult supervision required.

5+

# LADDER TRUCK

Made in Thailand exclusively for The Home Depot by Houseworks, Ltd.  
2388 Pleasantdale Road, Atlanta, GA 30340 • 71137 • Thailand 0620

## Contents:

1 Light Bar

1 Cab

1 Ladder Base

2 Ladder Supports

1 Ladder

4 Axle Pegs

4 Wheels

1 Body

1 Sticker Sheet

3 Long Nails

2 Short Nails

1 Long Screw

2 Short Screws



Finished example.

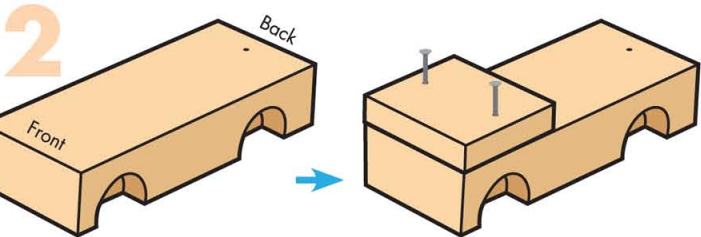
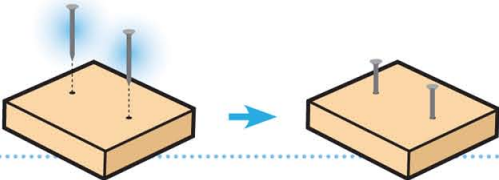
## ALSO NEEDED:

- Fine Sandpaper
- Wood Glue
- Hammer
- #2 Phillips Screwdriver

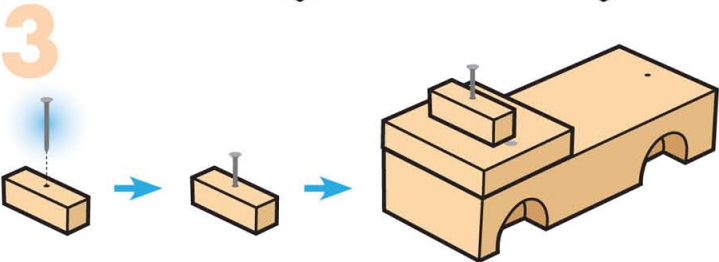
## Assembly:

Start with sanding each wood piece to remove any rough edges. Remember to sand in the direction of the wood grain. Glue and nail the pieces together. Allow glue to completely dry.

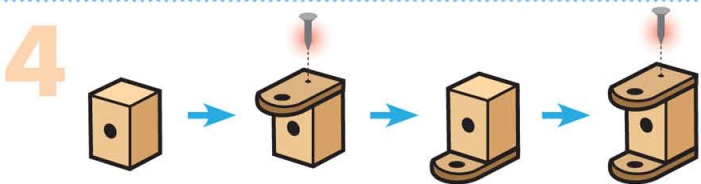
**Step 1** — Lay the cab down with the nail holes on top. Start 2 long nails.



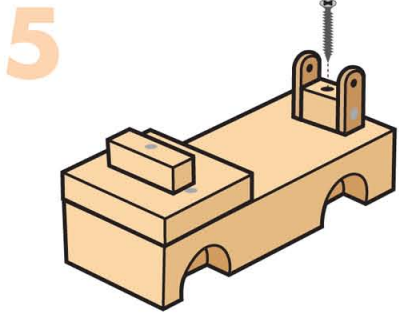
**Step 2** — Lay the body down with the wheel wells facing down. The edge with the screw hole is the back. Glue the cab on top of the front edge of the body. Make sure the screw hole is not covered. Make sure front and side edges are even. Nail them together.



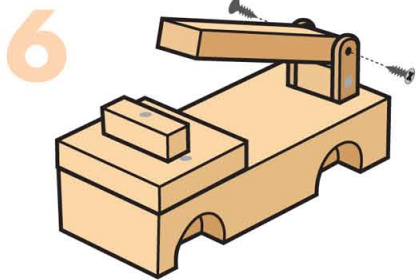
**Step 3** — Lay the light bar down with the nail hole on top. Start a long nail. Glue the light bar in between the nail heads in the cab. Nail them together.



**Step 4** — Stand the ladder base up. Place one of the ladder supports on top. Make sure the rounded top edge overhangs the hole in the ladder base and side and bottom edges are even. Using a short nail, nail them together. Turn it over and repeat to attach the other ladder support.



**Step 5** — Place the ladder base assembly on top of the back edge of the body and align the screw holes. Using a #2 Phillips Screwdriver, attach them together with the long screw.



**Step 6** — Slide the rounded end of the ladder in between the ladder supports and align the screw holes. Attach them together with 2 short screws. Adjust the short screws so that the ladder is not too loose or tight.

**Attention:** If you are painting the project, **DO NOT** paint inside or around the peg holes. Painting inside or around the peg holes make it difficult to insert axle pegs. Also, **DO NOT** paint the joint area of the ladder and ladder supports to make sure the ladder moves. Allow the paint to dry completely.

7



**Step 7** — Slide an axle peg through each wheel. Put a dot of glue on the end of each axle peg and insert them into peg holes. Tap with a hammer if necessary.

Add the stickers as shown above.

(Ver el dorso para instrucciones en español.)