

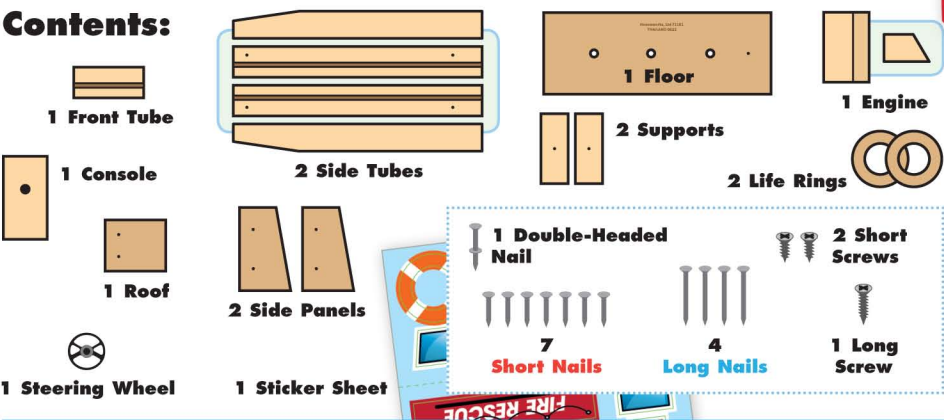
FIRE RESCUE BOAT

Made in Thailand exclusively for The Home Depot by Houseworks, Ltd.
2388 Pleasantdale Road, Atlanta, GA 30340 • 71161 • Thailand 0622



Finished example.

Contents:



Scan with your camera or visit homedepot.com/kids for an easy-to-follow guide on how to assemble this kit, plus more fun videos.



ALSO NEEDED:

- Fine Sandpaper
- Wood Glue
- Hammer
- #2 Phillips Screwdriver

Assembly:

Start with sanding each wood piece to remove any rough edges. Remember to sand in the direction of the wood grain. Glue and nail the pieces together. Allow glue to completely dry.

1

Step 1—Lay both support pieces down with screw holes facing up.
Pick up the floor. Align the outside screw holes in the floor to the support pieces. Attach them together with 2 short screws using a #2 Phillips Screwdriver.
Set aside until Step 3.

2

Step 2—Lay one side tube down with slot facing down. Start a long nail into the nail hole in the angled front edge.

Stand the front tube up. Place the nailed edge of the side tube on top making sure the slots are matching. Make sure outside edges are even. Nail them together.

Turn the project over and repeat to attach the other side tube.

3

Step 3—Lay the project flat with the slots toward the bottom. Slide the floor with the attached support pieces into the slots. Make sure the nail hole is at the back edge.

4

Step 4—Place the engine in between the side tubes and align with the back edge. Carefully, turn the project over. Nail the engine and floor together with a short nail.

Turn the project on one side. Nail the side tube and engine with a long nail.

Turn the project over and repeat with nailing this side to form a boat. Set aside the boat until Step 8.

5

Step 5—Lay the console down with big hole facing down and small nail hole facing up. The edge with screw hole is the bottom. Nail a double-headed nail into the nail hole. (The double-headed nail will only go half way as shown.)

6

Step 6—Turn the console on one side. Pick up one side panel. The wider edge is the bottom. Glue the side panel on top. The side panel hangs over the side with the big hole. Make sure outside edges are even. Nail them together with 2 short nails. Turn the console over and repeat to attach the other side panel.

7

Step 7—Stand the console up. Glue the roof on top. The roof hangs over the side with the big hole. Make sure outside edges are even. Nail it in place with 2 short nails.

8

Step 8—Align the center screw hole in the floor to the console. Attach them together with a long screw from the bottom.

9

Step 9—Put a dot of glue on the end of the steering wheel and insert it into the hole in the console.

Add stickers as shown and hang the life rings to the console.

Attention:

If you are painting the project, DO NOT paint inside the big hole in the console. That will make it difficult to insert the steering wheel. Let the paint dry completely.