



WARNING:
CHOKING HAZARD—Small Parts.
Not for children under 3 years.

The product contains functional sharp points and sharp edge. Not for children under 4 years.
Adult supervision required.



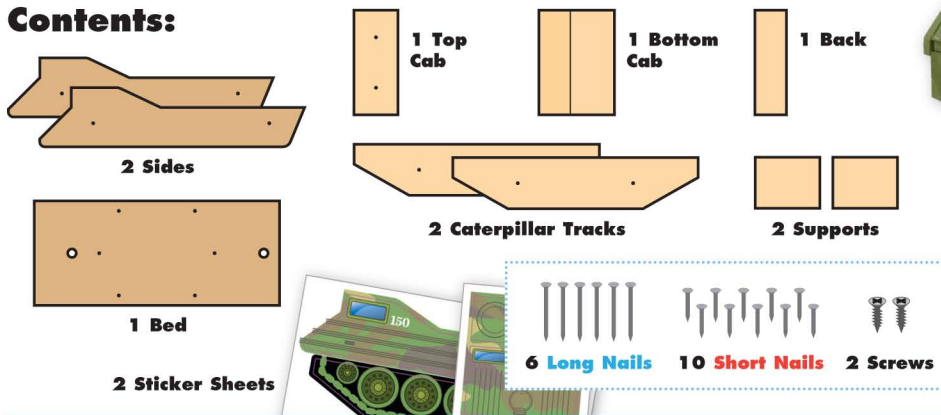
5+

AMPHIBIOUS VEHICLE

Made in Thailand exclusively for The Home Depot by Houseworks, Ltd.
2388 Pleasantdale Road, Atlanta, GA 30340 · 71150 · Thailand 0721

Finished example.

Contents:

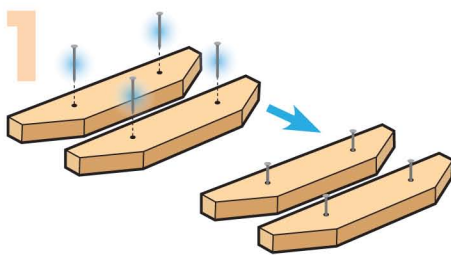


ALSO NEEDED:

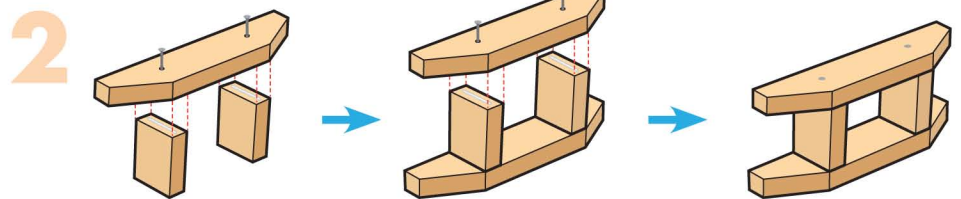
- Fine Sandpaper
- Wood Glue
- Hammer
- #2 Phillips Screwdriver

Assembly:

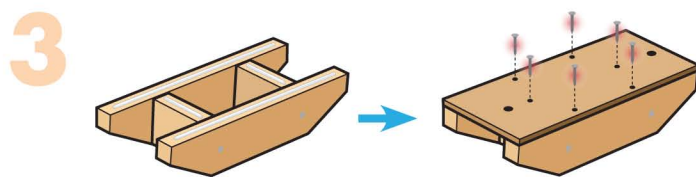
Start with sanding each wood piece to remove any rough edges. Remember to sand in the direction of the wood grain. Glue and nail the pieces together. Allow glue to completely dry.



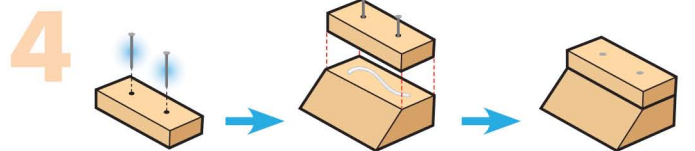
Step 1—Lay both **caterpillar track pieces** flat with the nail holes facing up. Start 4 **long nails**.



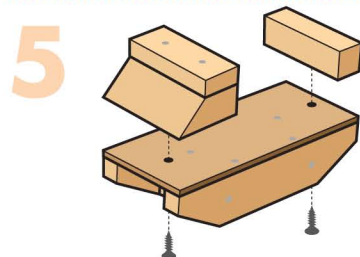
Step 2—Stand both **support pieces** up on the shorter edges. Add little glue to the top edges. Place one of the **caterpillar track pieces** on top. Make sure the **support pieces** are under the nails and top and bottom edges are even. Nail them together. Turn the project over and repeat to attach the other **caterpillar track piece**.



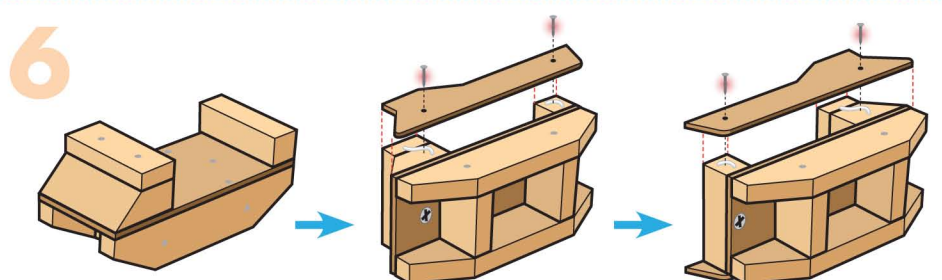
Step 3—Rotate the project right side up and add thin lines of glue to the top edges. Place the **bed piece** on top. Make sure outside edges are even. Nail it in place with 6 **short nails**.



Step 4—Lay the **top cab piece** flat with the nail holes facing up. Start 2 **long nails**. Lay the **bottom cab piece** down. Glue the **top cab piece** on top. Make sure sides and back edges are even. Nail them together to complete a **cab**.



Step 5—Align the screw holes in the **cab** and **bed piece**. Using a #2 Phillips screwdriver, attach them together with a **screw**. Repeat to attach the **back piece**.



Step 6—Rotate the project on one side. Add little glue to the top edge of the **cab** and **back piece**. Place one of the **side pieces** on top. Make sure front and top edges are even. Nail it in place with 2 **short nails**. Turn the project over and repeat to attach the other **side piece**.

Step 7—Add the **stickers** as shown.



Attention: If you are painting the project, paint and wait to dry completely before adding the **stickers**.

(Ver el dorso para instrucciones en español.)

TSCA TITLE VI Compliant