



WARNING:
CHOKING HAZARD—Small Parts.
 Not for children under 3 years.
 The product contains functional sharp points and sharp edge. Not for children under 4 years.
 Adult supervision required.



5+

SCARECROW NAPKIN HOLDER

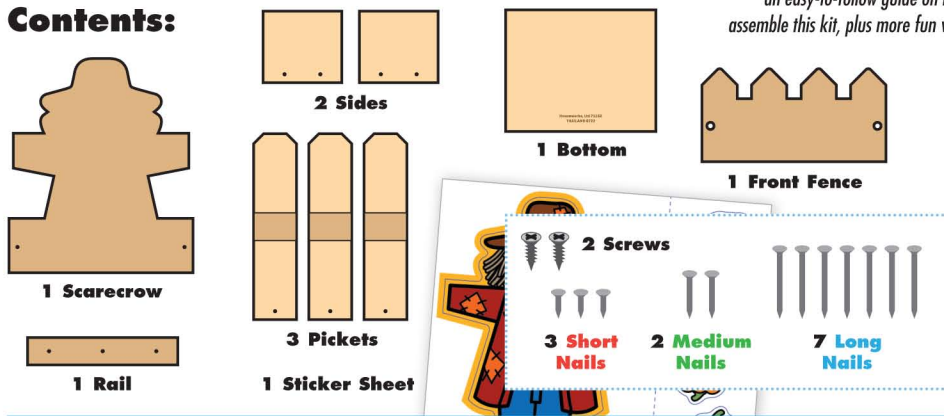
Made in Thailand exclusively for The Home Depot by Houseworks, Ltd.
2388 Pleasantdale Road, Atlanta, GA 30340 · 71162 · Thailand 0722

Scan with your camera or visit homedepot.com/kids for an easy-to-follow guide on how to assemble this kit, plus more fun videos.



Finished example.

Contents:



ALSO NEEDED:

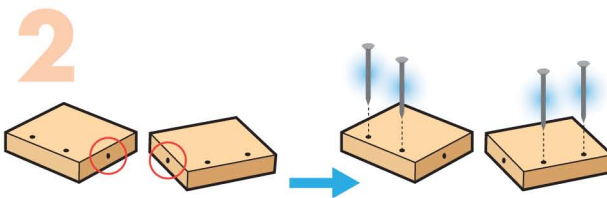
- Fine Sandpaper
- Wood Glue
- Hammer
- #2 Phillips Screwdriver

Assembly:

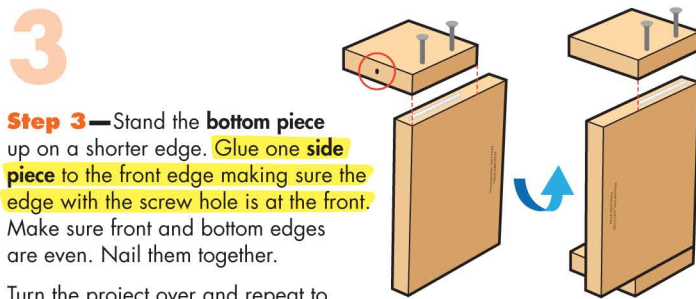
Start with sanding each wood piece to remove any rough edges. Remember to sand in the direction of the wood grain. Glue and nail the pieces together. Allow glue to completely dry.



Step 1—Check nail sizes very carefully and identify 3 short nails, 2 medium nails and 7 long nails.

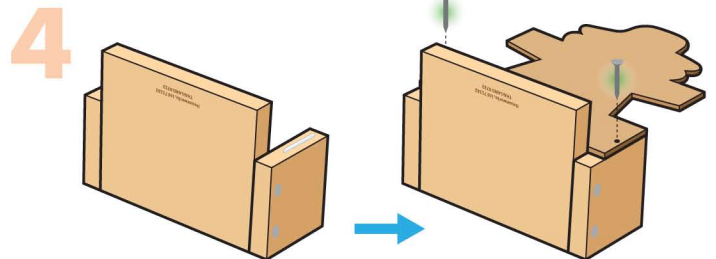


Step 2—Pick up a side piece. The edge with screw hole is the front edge. Lay both side pieces flat with nail holes facing up and the screw holes in the front edges facing in. Start 4 long nails.

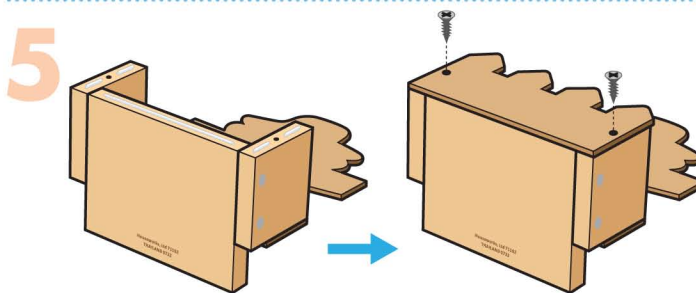


Step 3—Stand the bottom piece up on a shorter edge. Glue one side piece to the front edge making sure the edge with the screw hole is at the front. Make sure front and bottom edges are even. Nail them together.

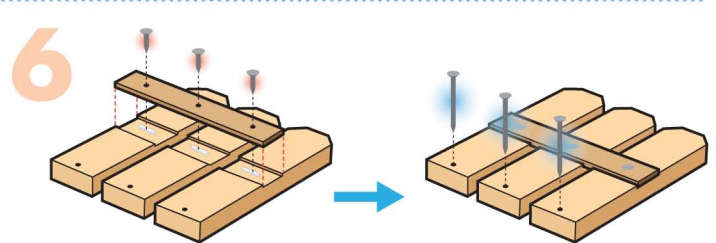
Turn the project over and repeat to attach the other side piece.



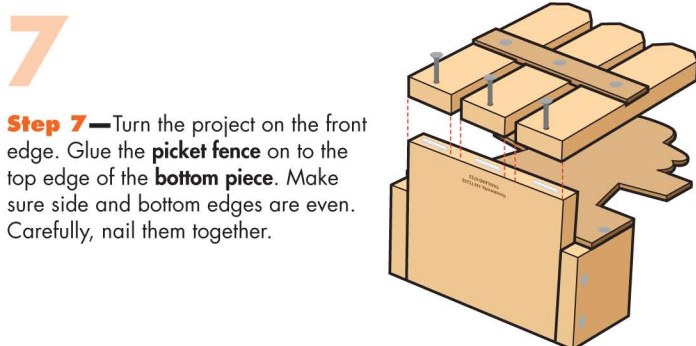
Step 4—Turn the project on the front edge. Glue the scarecrow to the side pieces. Make sure top and side edges are even. Nail it in place with 2 medium nails.



Step 5—Turn the project over. Glue the front fence to the front edge. Align the screw holes in the front fence and side pieces. Attach them together with 2 screws using a #2 Phillips Screwdriver. Set aside the project until Step 7.



Step 6—Lay the 3 pickets down with cutout for the rail facing up. Add a little glue to the cutouts. Place the rail in the cutouts. Make sure side edges are even and the picket in the middle is centered. Carefully, nail them together with 3 short nails to form a picket fence. Start 3 long nails into the nail holes at the bottom edges.



Step 7—Turn the project on the front edge. Glue the picket fence on to the top edge of the bottom piece. Make sure side and bottom edges are even. Carefully, nail them together.

Attention: If you are painting the project, paint and let dry completely before adding the stickers.



Step 8—Add the stickers as shown.

At Home: Add your salt and pepper shakers and napkins to the Scarecrow Napkin Holder.

(Ver el dorso para instrucciones en español.)

TSCA TITLE VI Compliant