



WARNING:
CHOKING HAZARD—Small Parts.
 Not for children under 3 years.
 The product contains functional sharp points and sharp edge. Not for children under 4 years.
 Adult supervision required.

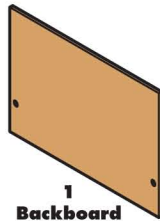
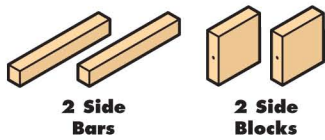


5+

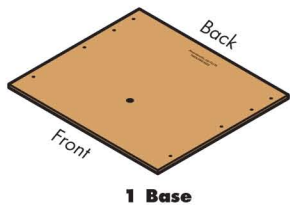
HORSESHOE GAME

Made in Thailand exclusively for The Home Depot by Houseworks, Ltd.
2388 Pleasantdale Road, Atlanta, GA 30340 · 71174 · Thailand 0623

Contents:



Finished example.



Scan with your camera or visit homedepot.com/kids for an easy-to-follow guide on how to assemble this kit, plus more fun videos.

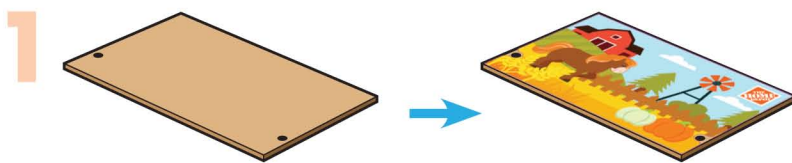


ALSO NEEDED:

- Fine Sandpaper
- Wood Glue
- Hammer
- #2 Phillips Screwdriver

Assembly:

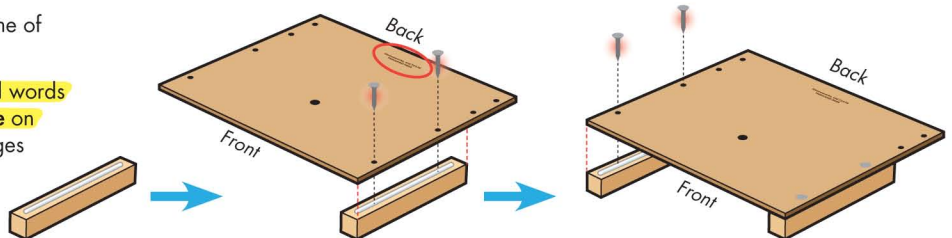
Start with sanding each wood piece to remove any rough edges. Remember to sand in the direction of the wood grain. Glue and nail the pieces together. Allow glue to completely dry.



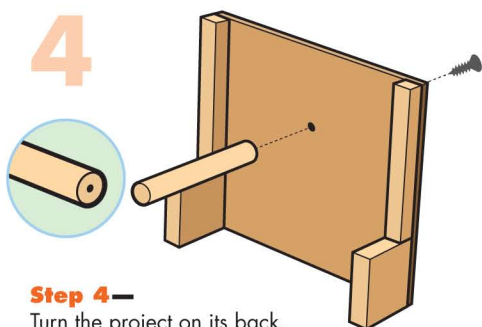
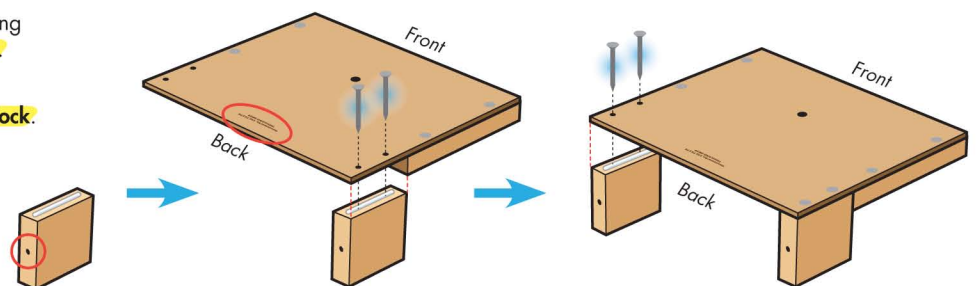
Step 1—Lay the **backboard** flat. Carefully peel off the **sticker** from the backing paper. Add the **sticker** to the **backboard**.

Set aside the **backboard** until Step 5.

2 Step 2—Lay one **side bar** down. Add a thin line of glue to the top edge. Pick up the **base**. Note: the edge with the printed words is the back edge. Place a front corner of the **base** on top of the **side bar**. Make sure front and side edges are even. Using 2 **short nails**, nail them together. Repeat to attach the other **side bar**.

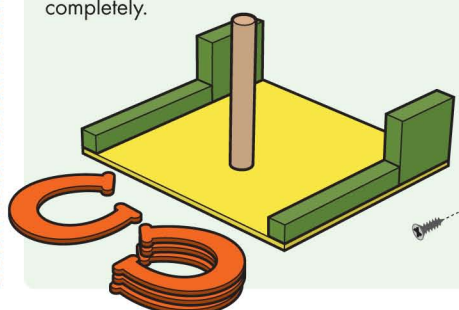


3 Step 3—Stand one **side block** up on the long edge. The edge with a hole is the back edge. Add a thin line of glue to the top edge. Align a back corner of the **base** to the **side block**. Make sure back and side edges are even. Using 2 **long nails**, nail them together. Repeat to attach the other **side block**.

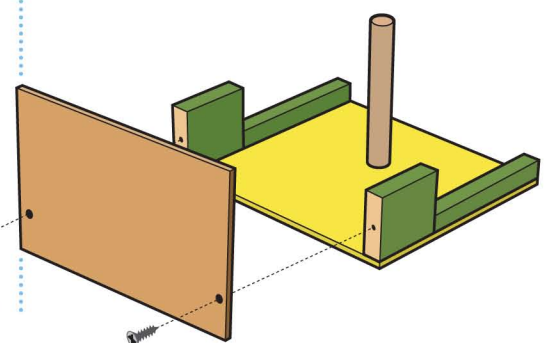


Step 4—Turn the project on its back. Align holes in the **target** and **base**. Attach them together with a **screw** using a #2 Phillips Screwdriver.

Attention: If you are painting the project, **DO NOT cover the holes in the side blocks**. Also, **DO NOT clog the holes in the backboard**. Let the paint dry completely.



5 Step 5—Align the holes in the **backboard** to the holes in the **side blocks**. Attach them together with 2 screws.



(Ver el dorso para instrucciones en español.)