



## WARNING: CHOKING HAZARD

Toy contains small parts and functional/sharp points. Not for children under 3 years old. Adult supervision required.



5+

# SANTA'S TREATS TRAY

Made in Thailand exclusively for The Home Depot by Houseworks, Ltd.  
2388 Pleasantdale Road, Atlanta, GA 30340 • 71139 • Thailand 0820

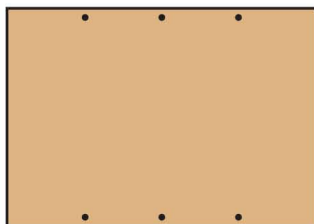
## Contents:



2 Sides



2 Handles



1 Bottom



10 Nails

1 Sticker Sheet



## ALSO NEEDED:

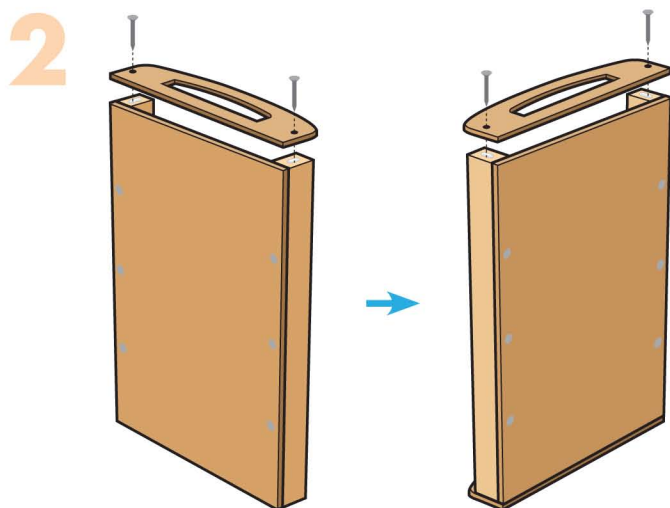
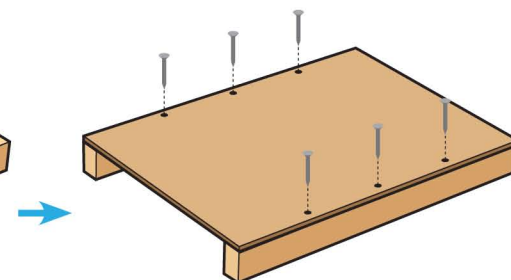
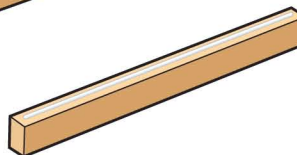
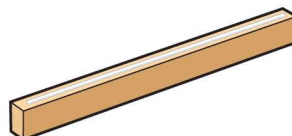
- Fine Sandpaper
- Wood Glue
- Hammer

## Assembly:

Start with sanding each wood piece to remove any rough edges. Remember to sand in the direction of the wood grain. Glue and nail the pieces together. Allow glue to completely dry.



**Step 1**—Place both **side pieces** on long, narrow edges. Add thin lines of glue to the top edges. Place the **bottom piece** on top. Make sure outside edges are even. Nail them together with 6 **nails**.



**Step 2**—Stand the project up. Add a little glue to the top edge of the **side pieces**. Place a **handle** on top. Make sure side and bottom edges are even. Carefully, nail them together with 2 **nails**. Turn it over and repeat to attach the other **handle**.

**Attention:** If you are painting the project, paint and wait to dry completely before applying the **sticker**.

3



**Step 3**—Carefully align and apply the **sticker** as shown.

**Before use, put food on a plate or other food-safe surface.**

(Ver el dorso para instrucciones en español.)

TSCA TITLE VI Compliant