



WARNING:
CHOKING HAZARD—Small Parts.
Not for children under 3 years.

The product contains functional sharp points and sharp edge. Not for children under 4 years.
Adult supervision required.

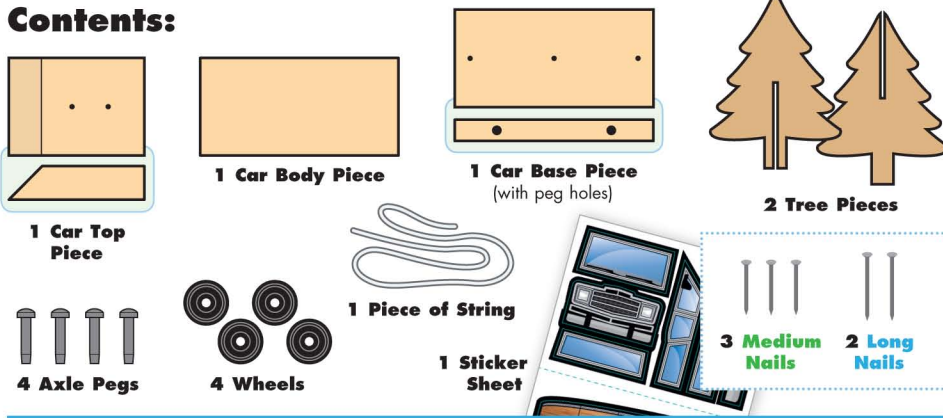


5+

CHRISTMAS CAR

Made in Thailand exclusively for The Home Depot by Houseworks, Ltd.
2388 Pleasantdale Road, Atlanta, GA 30340 · 71151 · Thailand 0821

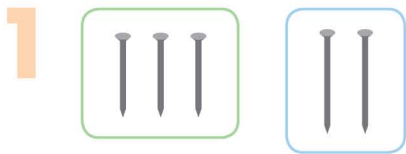
Contents:



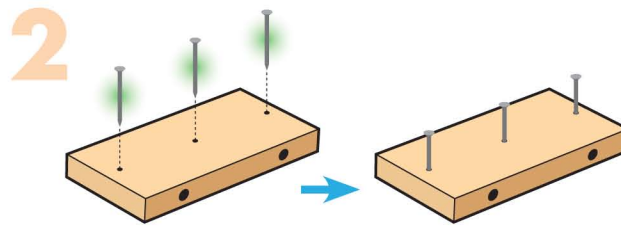
- ALSO NEEDED:**
- Fine Sandpaper
 - Wood Glue
 - Hammer

Assembly:

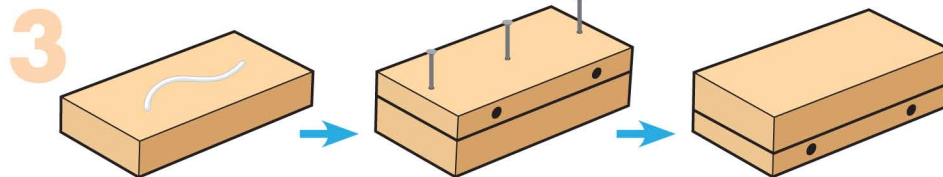
Start with sanding each wood piece to remove any rough edges. Remember to sand in the direction of the wood grain. Glue and nail the pieces together. Allow glue to completely dry.



Step 1—Check nail sizes carefully and identify 3 **medium nails** and 2 **long nails**.

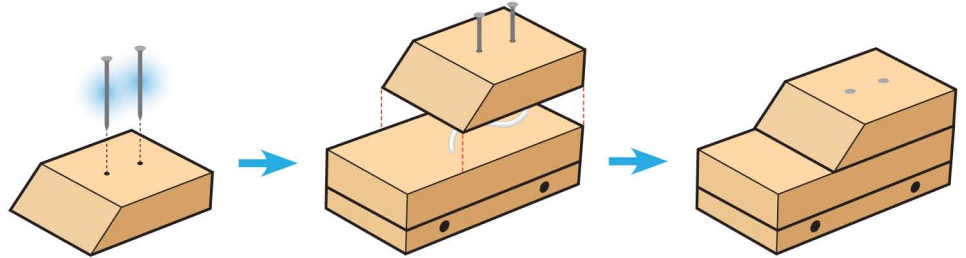


Step 2—Lay the **car base piece** flat with the nail holes facing up. Start 3 **medium nails**.



Step 3—Lay the **car body piece** flat. Glue the **car base piece** on top. Make sure outside edges are even. Nail them together. Turn the project over.

Step 4—Lay the **car top piece** down with the nail holes facing up. Start 2 **long nails**. Glue the **car top piece** on top of the project with the straight end at back. Make sure sides and back edges are even. Nail them together.



Step 5—Add little glue to the cutouts in the **tree pieces**. Fit the cutouts and push in all the way to complete a **tree**.

Attention: If you are painting the project, **DO NOT paint inside or around the peg holes**. Painting inside or around the peg holes make it difficult to insert axle pegs. Allow the paint to dry completely.

Step 6—Add the **stickers** as shown. Slide an **axle peg** through each **wheel**. Put a dot of glue on the end of each **axle peg** and insert them into the peg holes. Tap with a **hammer** if necessary.

Place the **tree** on top of the **car** and secure it with the **string**.

(Ver el dorso para instrucciones en español.)

TSCA TITLE VI Compliant

