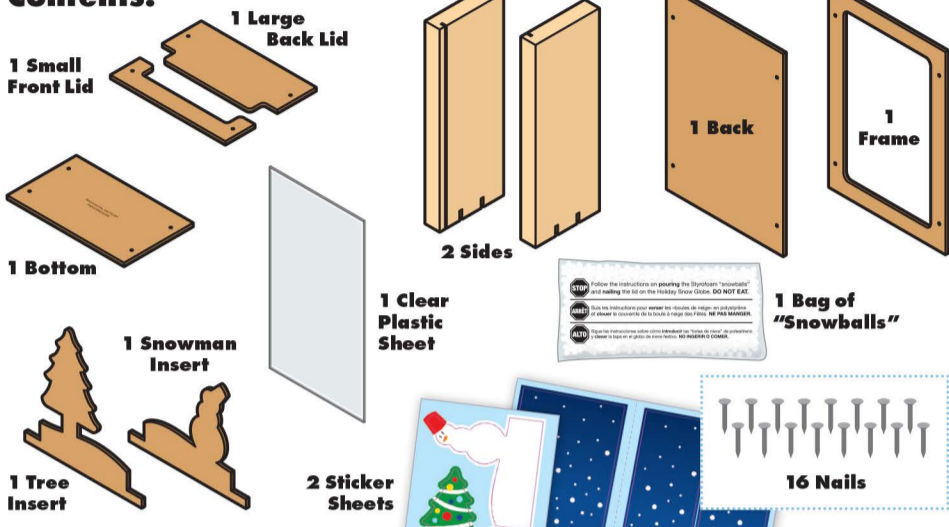


HOLIDAY SNOW GLOBE

Made in Thailand exclusively for The Home Depot by Houseworks, Ltd.
 2388 Pleasantdale Road, Atlanta, GA 30340 • 71187 • Thailand 0724

Finished example.

Contents:



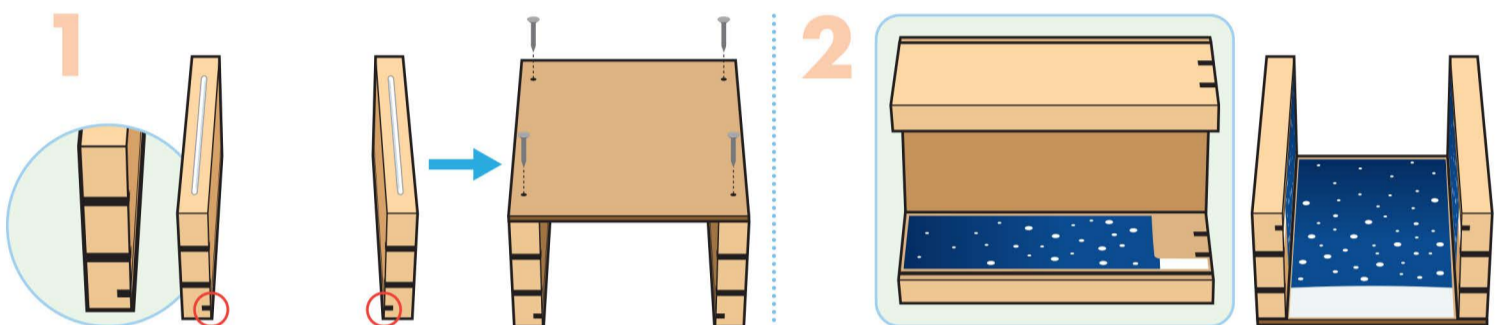
Scan with your camera or visit homedepot.com/kids for an easy-to-follow guide on how to assemble this kit, plus more fun videos.

ALSO NEEDED:

- Fine Sandpaper
- Wood Glue
- Hammer

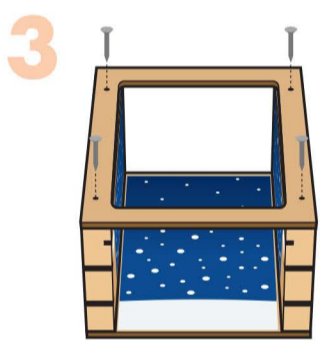
Assembly:

Start with sanding each wood piece to remove any rough edges. Remember to sand in the direction of the wood grain. Glue and nail the pieces together. Allow glue to completely dry.

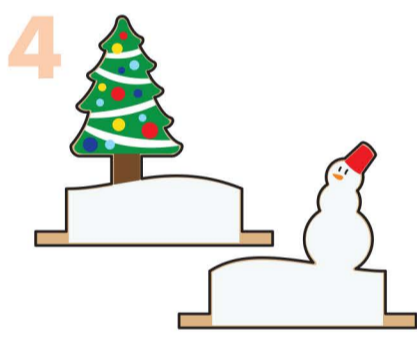


Step 1 — Stand both **side pieces** up on the long edges with slots close to the bottom and facing in. Glue the **back piece** on top. Make sure outside edges are even. Nail them together with 4 **nails**.

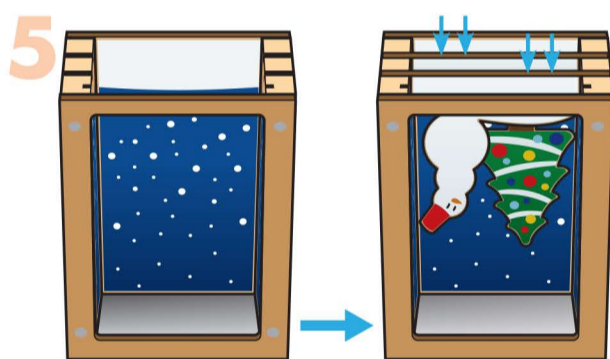
Step 2 — Carefully add **stickers** to the interior. Start with the **side stickers**. Ensure the white tab edge aligns with the slot without covering it. Once both **side stickers** are applied, apply the **back sticker**.



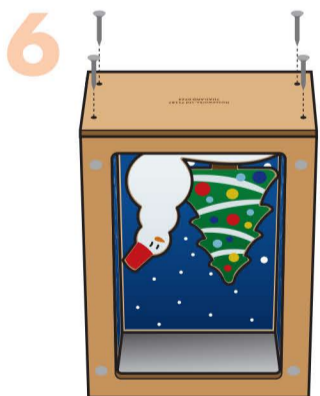
Step 3 — Glue the **frame** on top. Make sure outside edges are even. Nail them together with 4 **nails**.



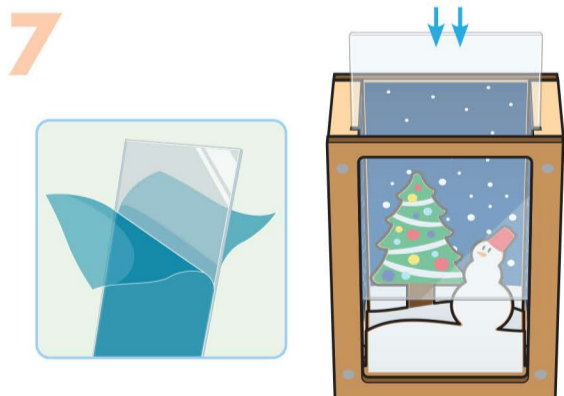
Step 4 — Apply the **stickers** onto the **tree** and **snowman inserts**. Carefully peel them off the backing paper, as they can tear easily.



Step 5 — Turn the project upside down with cutouts facing up. Fit the **tree insert** into to the back cutouts and fit the **snowman insert** into the front cutouts.

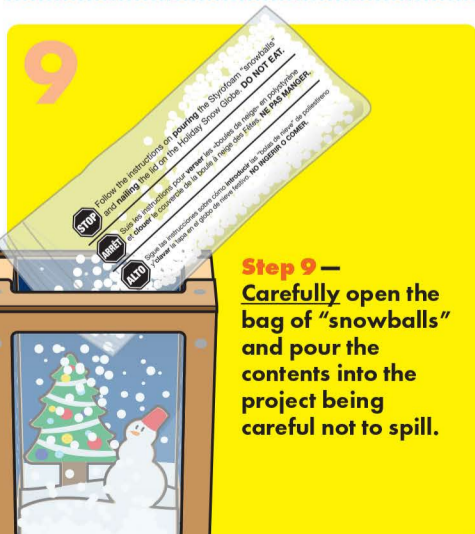


Step 6 — Glue the **bottom piece** on top. Make sure all edges are even. Nail it in place with 4 **nails**.



Step 7 — Turn the project right side up. Peel off the blue protective sheets from BOTH sides of the **clear plastic sheet**. Slide it into the slots.

Step 8 — Place the **small front lid** on top of the project so that it is covering the clear plastic sheet slots. Make sure front and side edges are even. Nail it in place with 2 **nails**.



Step 9 — Carefully open the bag of "snowballs" and pour the contents into the project being careful not to spill.

10

Step 10 — Fit the **large back lid** to the **small front lid** like puzzle pieces. Make sure there is no space between them. Nail the **large back lid** in place with 2 **nails**.

Attention: When painting, **avoid excess paint on the lids to prevent seepage inside. Don't paint the clear plastic sheet; wipe off any spills promptly.** Let it dry completely.

(Ver el dorso para instrucciones en español.)

TSCA TITLE VI Compliant

