



WARNING: CHOKING HAZARD

Toy contains small parts and functional/sharp points. Not for children under 3 years old. Adult supervision required.

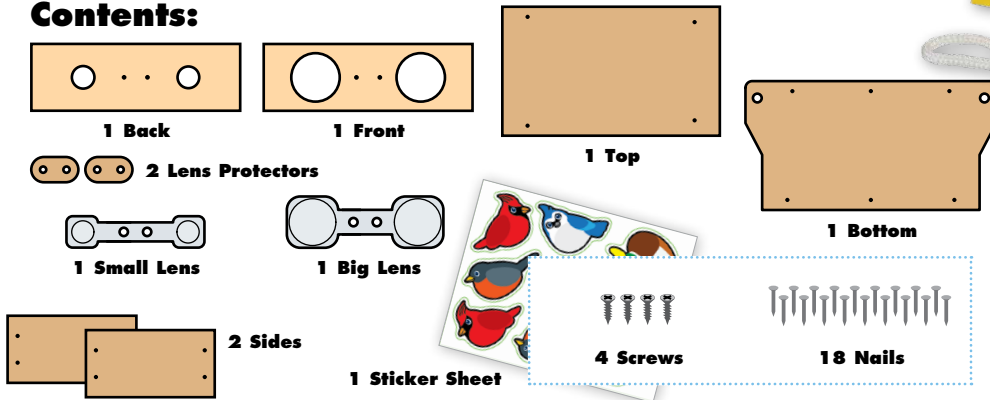


5+

BINOCULARS

Made in Thailand exclusively for The Home Depot by Houseworks, Ltd.
2388 Pleasantdale Road, Atlanta, GA 30340 • 71130 • Thailand 1119

Contents:



1 Piece of String

Finished example.

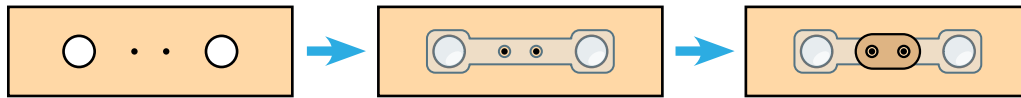
ALSO NEEDED:

- Fine Sandpaper
- Wood Glue
- Hammer
- #2 Phillips Screwdriver

Assembly:

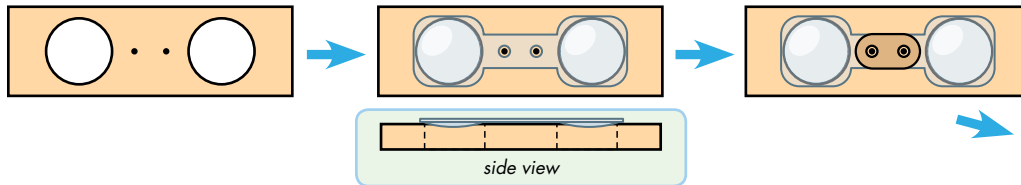
Start with sanding each wood piece to remove any rough edges. Remember to sand in the direction of the wood grain. Glue and nail the pieces together. Allow glue to completely dry.

1



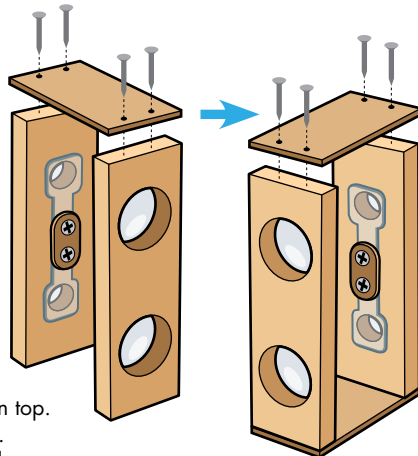
Step 1—Lay the **back piece** flat with the screw holes on top. Place the **small lens** on top. Place one of the **lens protectors** on top. Align with 2 center holes. Using a #2 Phillips Screwdriver, carefully attach them together with 2 screws.

2



Step 2—Lay the **front piece** flat with the screw holes on top. Pick up the **big lens** and feel both sides. One side is flat and the other side has curves. Make sure the curved side is facing down, place the **big lens** on the **front piece**. Place the other **lens protector** on top. Align with 2 center holes. Carefully attach them together with 2 screws.

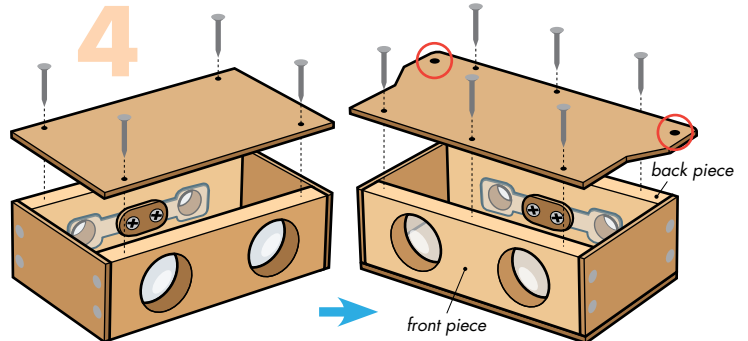
3



Step 3—Stand both **front** and **back pieces** up with the **lens sides** facing in. Place one of the **side pieces** on top. Make sure all edges are even. Nail them together with 4 nails.

Turn the project over and repeat to attach the other **side piece**.

4



Step 4—Lay the project down. Place the **top piece** on top. Make sure all edges are even. Nail it in place with 4 nails.

Turn the project over. Place the **bottom piece** on top. Make sure the tabs are close to the **back piece**. Make sure front corners and back edges are even. Nail it in place with 6 nails.

Attention: If you are painting the project, **BE VERY CAREFUL** not to paint inside the **lens holes**. You **CAN'T** use your Binoculars if you have paint on the lenses. Allow the paint to dry completely before adding the **string** and **stickers**.

(Ver el dorso para instrucciones en español.)

TSCA TITLE VI Compliant

