



## WARNING: CHOKING HAZARD

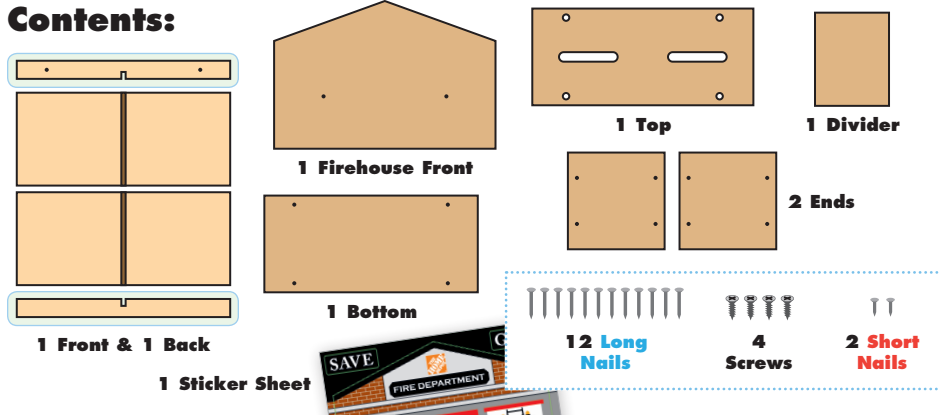
Contains small parts and functional/sharp points.  
Not for children under 4 years old.  
Adult supervision required.



# FIREHOUSE BANK

Made in Chonburi, Thailand exclusively for The Home Depot by Houseworks, Ltd  
2388 Pleasantdale Road, Atlanta, GA 30340 • batch #171099 • date: 06/17

## Contents:



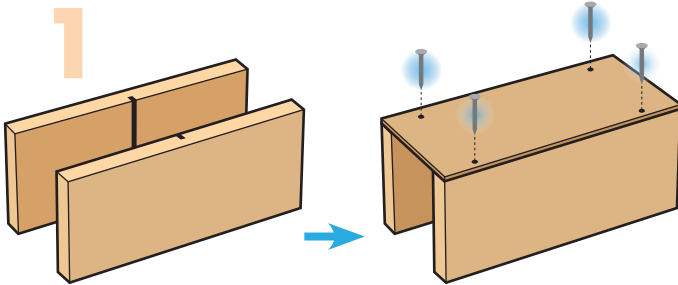
## ALSO NEEDED:

- Safety Goggles
- Fine Sandpaper
- Wood Glue
- Hammer
- Phillips Head Screwdriver

## Assembly:

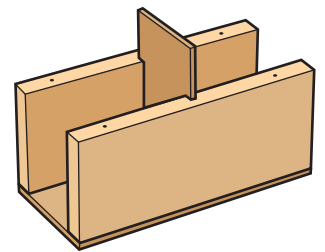
Start with sanding each wood piece to remove any rough edges. Remember to sand in the direction of the wood grain. Glue and nail the pieces together. Allow glue to completely dry.

1



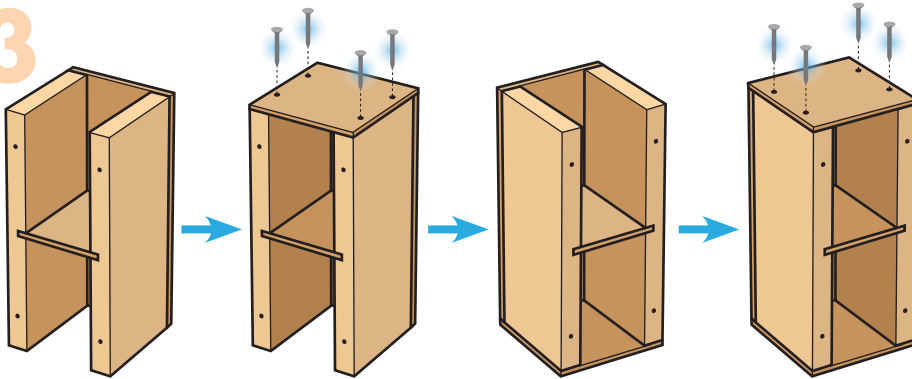
**Step 1**—Stand the front and back pieces on the long edges with screw holes down and the slots facing in. Glue the bottom piece on top. Make sure all edges are even. Using 4 long nails, nail it in place.

2



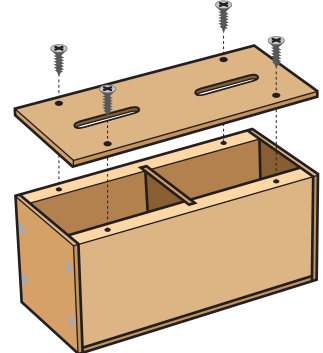
**Step 2**—Turn the project over. Slide the divider into the slots.

3



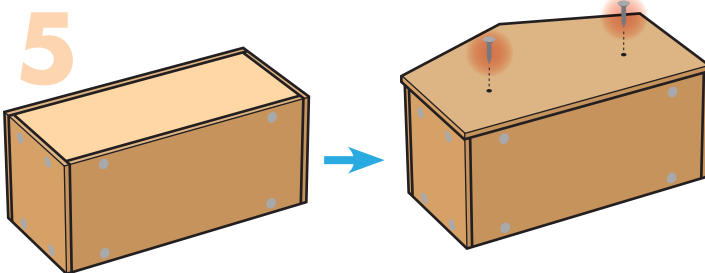
**Step 3**—Stand the project on one end. Glue one end piece on top. Make sure all edges are even and the nail holes are on the front and back pieces. Using 4 long nails, nail it in place. Turn the project over and repeat to attach the other end piece.

4



**Step 4**—Place the project open side up. Place the top piece on. **DO NOT glue the top piece.** Using 4 screws, attach the top piece through the screw holes.

5



**Step 5**—Lay the project on one side. Glue the firehouse front even with side and bottom edges. The firehouse front extends above the top edge. Using 2 short nails, nail it in place.

**Hint:** If you are painting the bank, paint and wait to dry completely before applying the stickers.

6

**Step 6**—Apply the stickers as shown.

**You can unscrew the top piece to empty the bank when you are ready!**



(Ver el dorso para instrucciones en español.)

California 93120 compliant for formaldehyde phase 2