



## WARNING: CHOKING HAZARD

Toy contains small parts and functional/sharp points.  
Not for children under 4 years old.  
Adult supervision required.



# FIREBOAT

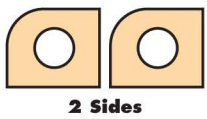
Made in Chonburi, Thailand exclusively for The Home Depot by Houseworks, Ltd  
2388 Pleasantdale Road, Atlanta, GA 30340 · batch #171112 · date: 06/18



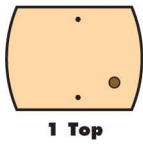
Finished example.



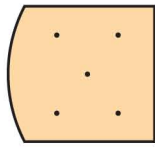
### Contents:



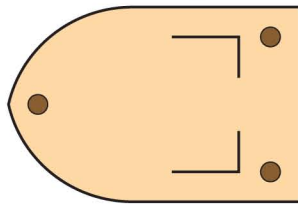
2 Sides



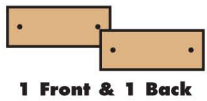
1 Top



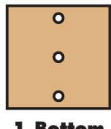
1 Base



1 Hull



1 Front & 1 Back



1 Bottom

1 Sticker Sheet



4 Short Nails



6 Long Nails



3 Screws



3 Hoses



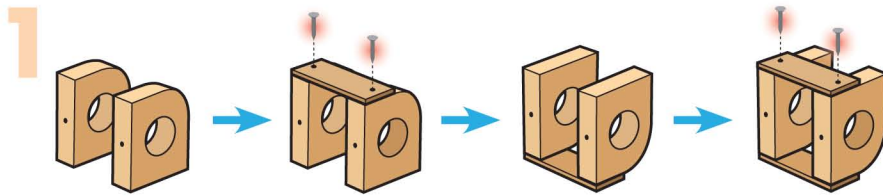
1 Smoke Stack

### ALSO NEEDED:

- Safety Goggles
- Fine Sandpaper
- Wood Glue
- Hammer
- Phillips Head Screwdriver

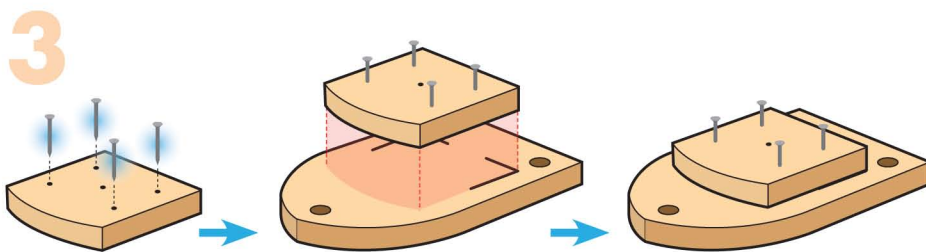
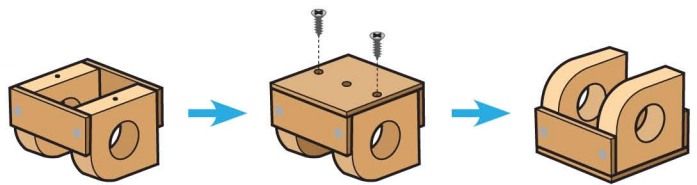
### Assembly:

Start with sanding each wood piece to remove any rough edges. Remember to sand in the direction of the wood grain. Glue and nail the pieces together. Allow glue to completely dry.



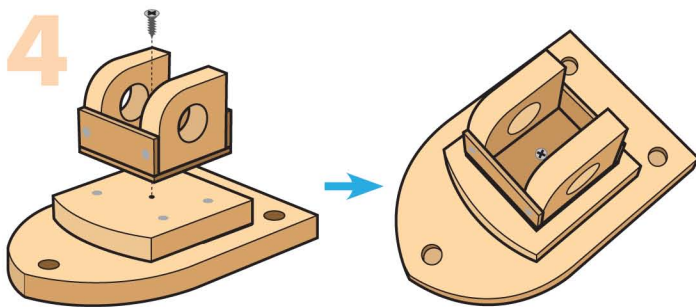
**Step 1**—Stand both side pieces up with the rounded corners at top and the nail holes on side. Glue the front piece on top. Make sure side and bottom edges are even. Using 2 short nails, nail it in place. Turn it over and repeat to attach the back piece using 2 short nails.

**Step 2**—Turn the project on top edge. Match the holes in the side pieces and the holes in the bottom piece. Using 2 screws, attach them tightly together to form the cabin.

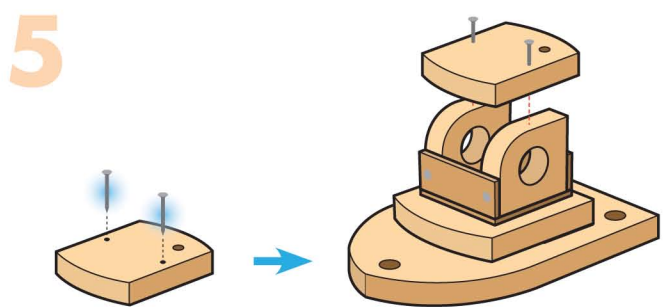


**Step 3**—Lay the base piece down with the holes on top. Start 4 long nails into the corner nail holes (DO NOT start a nail into the center nail hole).

Lay the hull down with the holes and lines on top. Using the lines as guide, glue the base piece on the hull. Finish nailing.

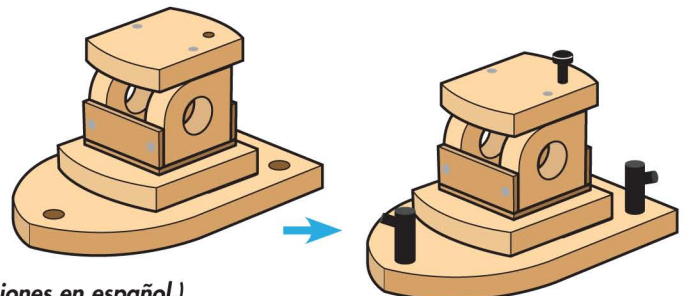


**Step 4**—Match the hole in the base piece and the hole in the cabin. Using a screw, attach them tightly together.



**Step 5**—Start 2 long nails into the nail holes in the top piece. Glue the top piece on top of the cabin. Make sure the top piece is centered on the cabin. Finish nailing.

**Step 6**—Add a dot of glue into the holes in the top piece and the hull. Lightly hammer the smoke stack and hoses into the holes.



**Attention:** If you are painting the project, paint and wait to dry completely before adding the stickers as shown above.

(Ver el dorso para instrucciones en español.)

California 93120 compliant for formaldehyde phase 2